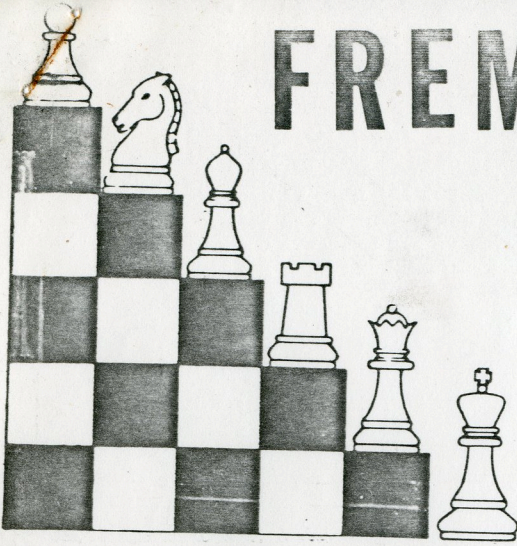


# FREMONT CHESS CLUB

## NEWSLETTER

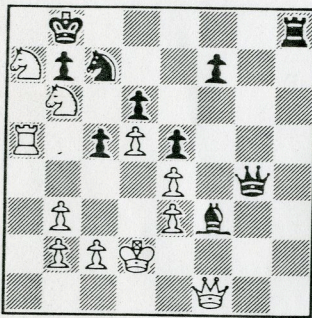


FREMONT CHESS CLUB MEETS EVERY FRIDAY FROM 7 TO 11 PM. AT FREMONT COMMUNITY CHURCH (LEFT SIDE ENTRANCE), 39700 MISSION BLVD. NEAR STEVENSON.

MAILING ADDRESS: HANS POSCHMANN, 4621 SENECA PARK AVE. FREMONT, CALIFORNIA 94538  
EDITOR: DAN MCDANIEL

DECEMBER 1982

## LERA GOES GAGA OVER US



Loyd - Rosenthal  
Paris 1867

White to move and mate in four,  
and a very pretty finish too!

Demonstrating a subtle grasp of positional niceties, five members of the Fremont Chess Club withstood all challenges to finish in the middle of the pack.

Entered in the recent LERA tournament, Jan Olsson and Ed Sheffield collected three points apiece out of six possible in the A section, while the bumbling B's boasted Dan McDaniel  $3\frac{1}{2}$ , Hans Poschmann 3, and Paul Friedrich  $2\frac{1}{2}$ .

### HANS TURNS "PRO"

Poschmann became the second club member to turn "professional" in as many newsletter issues by finishing in a four way tie for first as the top B player at Mechanics Institute.

In an open tournament, Hans had three wins and two losses to grab \$50.00. This amount of cash is much more impressive than \$30.00, which the club's other "pro" got.

### PAY UP, TURKEYS

Dues for club membership are payable the first Friday in January. \$6.00 will keep everyone of the powers-that-be happy until July.

Since this averages out to less than 25¢ per meeting, it shouldn't be too hard to get financing at your local bank.

## FEARSOME FOES

Jan Olsson	1962
Stuart Thorsby	1873
Ed Sheffield	1848
Hans Poschmann	1724
Dan McDaniel	1696
Bob Pellerin	1680
Paul Friedrich	1660
G. Dela Cruz	1651
Dan Miranda	1600
George Hahn	1465
Dick Chandler	1461
Dan Brinkman	1436
Om Tiku	Unr

# games to laugh by

Here are some games from the LERA matches.

Hans Poschmann (1724)  
D. Harris (1607)

1)	Nf3	Nf6
2)	e3	c5
3)	c4	Nc6
4)	d4	cd
5)	ed	d5
6)	Nc3	e6
7)	Bg5	Be7
8)	a3	O-O
9)	Be2	Ne4
10)	Be7	Nc3
11)	Bd8	Nd1
12)	Rd1	Rd8
13)	c5	

White has come out of the simplifications with one advantage, a queen side pawn majority. His king is also closer to the center.

	b6	
14)	b4	bc
15)	dc	

Correct. Keeping the majority and not opening a file for black's rook.

	a6	
16)	Nd5	Nd4
17)	Rd4	Bd7?

Black should get in e5!, mobilizing his pawns and freeing his bishop.

18)	f4!	Bb5
19)	Kd2	Be2
20)	Ke2	Rdc8
21)	Rel	a5
22)	Kf3	ab
23)	ab	Ra3+
24)	Re3	Ra4

After previously trading everything in sight to get to the end game, black decides he doesn't like his chances after all, and keeps his rook.

25)	Rb3	Kf8
26)	Ke3	Ke7
27)	Rd2	Rca8
28)	Rdb2	Ra3
29)	b5!	Rb3+
30)	Rb3	Kd7
31)	Rb4	Kc7
32)	g4	f6

Both players are seeing to the safety of their king side pawns. The issue, however will be decided on the queen side.

33)	Kd4	Ral
34)	b6+	Kb7
35)	c6+!	Kb8

The c pawn can be taken only if black wants the b pawn to queen.

36) b7?

White almost gives it away. Kc5!! wins. Of course I could be wrong.

	Rc1	
37)	f5	Rc6
38)	fe	Re6
39)	Kd5	Re7
40)	h4	Rb7?
41)	Rb7	Kb7

White's king position is stronger than black's potential passed pawn.

42)	Ke6	Kc6
43)	Kf7	h5
44)	gh	f5
45)	Kg7	f4
46)	h6	f3
47)	h7	f2
48)	h8(Q)	f1(Q)
49)	Qe8+	Kd6
50)	Qf8+	

And black resigns as the h pawn wins.

## SOLUTION TO THE PUZZLE

33) Qc3!! Qc3, 34) Nd7+ Ka8, 35) Nc6++ Na6, 36) Nb6 smothered mate!

More LERA.

Bob Wheat (1695)  
Dan McDaniel (1696)

1)	d4	Nf6
2)	c4	e6
3)	Nc3	Bb4
4)	Bg5	d5

The underlying theme of the Nimzo-Indian. Black wants to prevent e4.

5)	e3	O-O
6)	Rc1	c6
7)	Bd3	Nbd7
8)	Nf3	Qa5
9)	a3??	

White should castle. This move loses at least the exchange. Can you find it before you read on?

The editor will publish your game too, if you remember to give him a copy that is legible and not too boring.

Wheat/McDaniel (Continued)

- |     |     |      |
|-----|-----|------|
| 9)  |     | Bc3+ |
| 10) | Rc3 | dc!  |
| 11) | Bc4 | Ne4! |
| 12) | Qc2 | Ng5  |

Winning a piece in broad daylight.

- |     |      |      |
|-----|------|------|
| 13) | b4   | Nf3+ |
| 14) | gf   | Qg5  |
| 15) | Ke2  | Nf6  |
| 16) | h4   | Qh5  |
| 17) | Qb1  | e5!  |
| 18) | de   | Qe5  |
| 19) | Rccl | Bf5  |

All of black's moves are simple and strong, with an eye towards either trading down, or if white refuses to trade, then to gain space.

- |     |      |      |
|-----|------|------|
| 20) | Qa2  | Rad8 |
| 21) | Rhg1 | Be6  |
| 22) | Rg5  | Bc4+ |
| 23) | Rc4  | Qd6  |
| 24) | Qc2  | Rfe8 |
| 25) | Rd4  | Qe6  |

At this point, white had used 78 minutes, and black just 27.

- |     |     |      |
|-----|-----|------|
| 26) | Rf4 | Rd5  |
| 27) | Rg1 | Red8 |
| 28) | e4  |      |

The remaining eight moves of the game are forced, as black will mate or win one of the rooks.

- |     |     |      |
|-----|-----|------|
| 29) | Qd2 | Rd2+ |
| 30) | Kd2 | Qa2+ |
| 31) | Kd3 | Qa3+ |
| 32) | Kc4 | b5+  |
| 33) | Kc5 | Qc3+ |
| 34) | Kd6 | Qb4+ |
| 35) | Kc6 | Qc4+ |
| 36) | Kd6 | Ne8+ |

And white has had enough. If Ke5, Qc5 mates and if Ke7 or Kd7 then Qe6+ 38) Kd8 Qd6+ winning the rook.

\* \* \* \* \*

Jan and Ed paired up at LERA.

Jan Olsson (1962)  
Ed Sheffield (1848)

- |    |     |     |
|----|-----|-----|
| 1) | d4  | d5  |
| 2) | Nf3 | e6  |
| 3) | c4  | c6  |
| 4) | e3  | Bd6 |
| 5) | Nc3 | f5  |
| 6) | Bd3 | Nf6 |
| 7) | O-O | O-O |
| 8) | Qc2 | Ne4 |

- |     |     |       |
|-----|-----|-------|
| 9)  | h3  | Nd7   |
| 10) | b3  | Rf6   |
| 11) | Ne2 | Rh6   |
| 12) | Be4 | fe    |
| 13) | Nh2 | Nf6   |
| 14) | f3  | Bh2+? |
| 15) | Kh2 | ef?   |

Two positional mistakes in a row give black a permanently cramped game. He first trades his good bishop for a badly placed knight, then opens a diagonal for white's queen.

- |     |      |     |
|-----|------|-----|
| 16) | Rf3  | Ne4 |
| 17) | Ba3  | Rf6 |
| 18) | Raf1 | Bd7 |
| 19) | Rf6  | Nf6 |
| 20) | Bd6  | Qa5 |

Pawn hunting when no pawns are there.

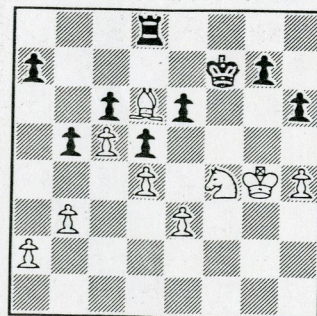
- |     |     |     |
|-----|-----|-----|
| 21) | Ng3 | Be8 |
| 22) | Rf4 | Bg6 |
| 23) | Qf2 | Qd8 |
| 24) | c5! |     |

The bishop is all powerful here.

- |     |     |      |
|-----|-----|------|
| 25) | Qf3 | Qe8  |
| 26) | Be5 | Rd8  |
| 27) | Bc7 | Nd7  |
| 28) | Bd6 | Rc8  |
| 29) | h4  | Nf6  |
| 30) | Ne2 | h6   |
| 31) | Qh3 | Be4  |
| 32) | g4  | Bf5  |
| 33) | Rg4 | Bg4? |
| 34) | Qg4 | Ng4  |
| 35) | Nf4 | Qf7  |
|     |     | Re8  |

Black has no counterplay. White's minor pieces are too much.

- |     |     |     |
|-----|-----|-----|
| 36) | Kg3 | Qf5 |
| 37) | Nh5 | Qg4 |
| 38) | Kg4 | Kf7 |
| 39) | Nf4 | b5  |



White to make his 40th move. Black's rook is next to useless.

Olsson/Sheffield (Continued)

- 40) h5 a5
- 41) Ng6 Rc8

Black's only hope is to sacrifice a pawn or two so his rook can get into white's backfield. Otherwise he is doomed to passivity.

- 42) a4?

Giving black a chance to open the b file, but...

- 43) Ne5 Ke8
- 44) ba ba
- 45) Kf4 Kd8
- 46) e4! Ke8
- 47) Ke4 de

Black can only wait for the blow to fall.

- 48) Nc4 Ke8
- 49) Nb6 Rd8
- 50) Bc7 Rd5
- 51) Nd5 ed+
- 52) Ke5 Kf7
- 53) Ba5 g6
- 54) hg+ Kg6
- 55) Bd8 Kf7
- 56) a5 Ke8
- 57) a6

And black gives up the ghost.

\* \* \* \* \*

Dan McDaniel (1696)

Hans Poschmann (1724)

- 1) d4 Nf6
- 2) Nf3 e6
- 3) e3 b6
- 4) Bd3 c5
- 5) Nbd2 d5
- 6) c3 Bb7

An interesting idea here is Ba6, and white is forced to give up his good bishop or forego castling.

- 7) Qe2

Preventing that for good.

- 8) O-O Be7
- 9) e4 Nbd7
- 10) Ne4 de
- 11) dc O-O
- 12) Nf6+ Nc4

The king feels slightly insecure.

- 11) dc Nc4
- 12) Nf6+

Setting up the position for his 17th move.

- 13) Bc2 Bf6
- 14) c4 Ba6
- 15) Rb1 Qc7
- 16) Bb7?

By doing this, black releases the tension and lets white go on the offensive.

- 16) Ng5 Qc6
- 17) Bh7+ Kh8
- 18) Be4!! Ne4
- 19) Qh5+

Black resigns. A cheapo, but slick.

\* \* \* \* \*

Your Embarrassed Editor (1696)

Ed Sheffield (1846)

- 1) d4 d5
- 2) c4 e6
- 3) Nc3 c6
- 4) Nf3 Bd6
- 5) e3 Nd7
- 6) Bd3 f5
- 7) Qc2 Ngf6
- 8) O-O?

As this shows later, a clear case of castling into it.

- 9) cd Ne4
- 10) a3? ed

Common sense demands that Be4 eliminating the strong knight, but white is loath to part with the two bishops and doesn't like the idea of no pieces near his king. All his instincts say in neon lights twelve feet high "ATTACK IS COMING".

O-O

- 11) b4

Gaining useless space.

- 12) Bb2 Rf6
- 13) Ne2 Rh6
- 14) Bh2+!!

All of white's instincts now say "ATTACK IS HERE".

- 14) Kh1

Terrible. But what can he do? If Nh2, then Qh4 with mate to follow.

- 15) Kg1 Bd6+
- 16) g3 Ndf6
- 17) Ng4

Black has an embarrassment of riches. Anything he wants to try works.

- 17) Kg2 Nef2!
- 18) Rf2 Ne3+

White resigns. A true oogie.

Lecturer and teacher Richard Shorman visited the club and spent three hours with us. His advice was: "DON'T MAKE MISTAKES". White obviously didn't pay attention.