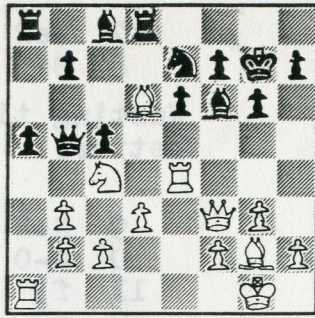


# FREMONT CHESS NEWSLETTER



FREMONT CHESS CLUB MEETS EVERY FRIDAY 7-11 PM. AT FREMONT COMMUNITY CHURCH (left side) 39700 MISSION BLVD. NEAR STEVENSON BLVD. MAILING ADDRESS: HANS POSCHMANN 4621 SENECA PK, FREMONT, CAL 94548 12-84

## book on the 6th snort, grunt, huff

Paid up members and their ratings:

K. Lawless	2246
J. Spingarn	2000*
M. Smitherman	2000*
E. Sheffield	1913
C. Mavreadis	1900*
D. Stambaugh	1900*
H. Poschmann	1895
P. Masgalajian	1875
J. Brand	1825
D. McDaniel	1818
B. Pellerin	1717
P. Friedrich	1704
M. Sweeney	1702
N. Espiritu	1637
R. Dawson	1600*
M. Trombley	1594
G. Hahn	1523
T. LaTorre	1478
S. Li	1464
M. Haas	1315
C. Pigg	1309
M. Buck	1305
J. Morillas	Unr.

\* Provisional

### SCHEDULE

12/14	Free
12/21	No Show
12/28	No Show
1/4	Ebony Rook
1/11	Ebony Rook
1/18	Ebony Rook
1/25	Ebony Rook
2/1	Consultation
2/8	Consultation

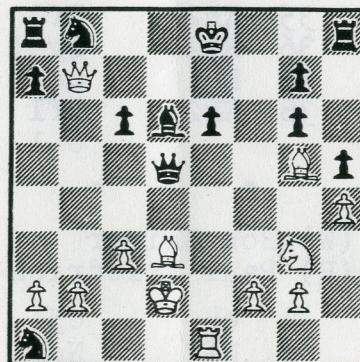
Wondering about the perfect gift for the chess fiend in your family?

Just in time for the holidays comes "Chess Book II", the classic tournament book about the Fremont Chess Club Championships.

With 76 games and 40 diagrams, this becomes an instant classic, and collectors item. Just \$5.00 for friend or foe.

Players from the tournament get one

CALDUCH - ALMEDA  
Mollet, 1935



White to mate in 3.

free.

In the recent LERA games, only four club members dared the Thanksgiving hangover. Chris Mavraedis got 2 points out of 5 in the open; Paul Friedrich had 1½ in the A's; Paul Masgalajian had 3½ and Dan McDaniel 3 in the B's.

In the speed tournament last week, the rotten Novag "Super" blitzed the field with a perfect 18-0 mark. Two players, Friedrich and McDaniel did beat it in the complete game but both lost on time.

The results:

Novag	18 - 0
D. Miranda	13 - 5
D. McDaniel	11 - 7
E. Sheffield	11 - 7
P. Friedrich	10 - 8
P. Masgalaj.	8 - 10
D. Stambaugh	6 - 12
G. Hahn	6 - 12
C. Pigg	5½-12½
C. Fisher	3½-14½

IMPORTANT NEWS !!!

Remember to pay your \$6.00 club dues.



This game won a brilliancy prize at LERA:

Kerry Lawless (W)  
Dan Fukuma (B)

1 e4 e5  
2 Nf3 Nc6  
3 Bc4 Bc5  
4 c3 Nf6  
5 d4 ed  
6 0-0 0-0?

Where white gambits a pawn, black should continue to mobilize with d6.

7 cd Be7  
8 e5 Ne8  
9 d5 Nb8

Black is positionally lost after 9 moves.

10 Nc3 d6  
11 e6 fe  
12 de Nc6?

Trying to make up lost ground. Best is c6.

13 Ng5! Nf6

If Bg5, e6 winning the queen.

14 Nf7 Qe8  
15 Nb5 Na5!  
16 Bd3! Be8  
17 Re1 a6  
18 Nd8 Qe7  
19 Nd4 Rd8  
20 Nf5 Qe8  
21 e7 Rd7  
22 Bg5 Nc6  
23 Bf6 1-0

\* \* \*

Ray Rotor (W)  
Chris Mavraedis (B)

1 e4 d5  
2 e5 c5  
3 d4 cd  
4 Qd4 Nc7  
5 Bb5 Bf5

Transposing into a favorable form of the French Defense.

6 Bc6 bc  
7 c3?

Better is c4.

e6  
8 Nf3 Ne7  
9 Qa4 Qb6  
10 0-0 Bd3  
11 Re1 Bb5  
12 Qg4 Nf5  
13 a4

He should get his pieces off the back rank first.

Ba6  
14 Nd4 Bc5  
15 a5 Qb7  
16 Nf5 ef  
17 Qf5 0-0  
18 b4 Be7  
19 Be3 Rac8  
20 Nd2 c5

Control of the center is worth a pawn.

21 bc Bc5  
22 Bd4 Bd4  
23 cd Qb2  
24 Nf3 Rc2  
25 Ng5 g6  
26 Qh3 h5  
27 Rab1

The wrong rook.

Qd4  
28 e6 Qf2  
29 Kh1 fe  
30 Qe6 Kg7  
31 Qd5 Rf5

White's problem is he can't leave g2 undefended.

32 Ne6 Kh6  
33 Qa8 Bc8  
34 h3 Rb2  
35 Kh2 Rf3  
36 Rb2 Qg3!  
37 Kgl Qe1  
38 Kh2 Rf1  
0-1

\* \* \*

(W) Bob Shiner  
(B) Paul Friedrich

1 e4 c5  
2 Nf3 Nc6  
3 d4 cd  
4 Nd4 Nf6  
5 Nc3 a6  
6 Be3 e6

7 Be2 Bb4  
8 Bd3

Wasting time. 0-0 is better.

Ne5  
9 Ne2 b5  
10 0-0 Bb7  
11 f3 Rc8  
12 a3 Bc5

Eliminating white's good bishop.

13 Bc5 Rc5  
14 Qd2 0-0  
15 Nd1 d5

Black has a better game.

SOLUTION TO PUZZLE

17 Re5!! 1-0. (If 17...Be5; 18 Qe7 mate. If 17...Qe5; 18 Bg6 Kf8; 19 Qf7 mate. If 17...0-0; 18 Rd5 and wins.)

16 Qe3 Qc8  
17 Ndc3 Nd3  
18 cd de  
19 de h6

Wasting time, but black's game is so good, it doesn't matter.

20 Rfd1 Rc7  
21 Rd2 Nd7  
22 Rad1 Ne5  
23 b3 Rd7  
24 Rd7 Nd7  
25 Qd4 Nb8  
26 b4 Qc7  
27 Kf2 Nc6  
28 Qc5 Rc8  
29 Rd6 Qb8  
30 Qb6?? Qd6  
0-1

\* \* \*

(W) Dan McDaniel  
(B) Susan Mills

1 e4 e6  
2 d4 d5  
3 Nc3 Nf6  
4 Bg5 h6?

Inferior, as white will demonstrate.



McDaniel - Mills

5 Bf6 gf  
6 ed ed  
7 Qe2

A coffee-house type of move, but still effective. White is interested in rapid development.

8 0-0-0 Be6 c6  
9 f4 Qc7

The pawn push would now fail to the queen check at f4.

10 g3 Be7  
11 Bh3 f5  
12 Nf3 Nd7  
13 Rhe1 Qd6

Forced, or white wins the pawn at f5 because of the mate threat.

14 Qd3 Nb6  
15 Bf5 Nc4!  
16 Ne5! Nb2!  
17 Kb2 Bf5  
18 Qf5 Qa3  
19 Kbl Qc3

Black has re-established material equality, but white has seen one move more.

20 Qf7 Kd8  
21 Nc6! bc  
22 Qe7 Kc8  
23 Qe6 Kc7  
24 Qe7 Kc8  
25 Rd3 Rb8  
26 Kcl Qb2  
27 Kd2 Rb4  
28 Qa7

Defending the a and d-pawns.

29 Qc5 Rb7 Qa2  
30 Ra3!

The white queen's benevolent influence extends to all corners of the board.

31 Qc6 Qb2 Kb8  
32 Qd6 Kc8

If 32...Rc7; 33 Rb3 wins the queen.

33 Ra8 Rb8  
34 Rb8 Qb8  
35 Qb8 Kb8  
36 Re7 1-0  
\* \* \*

The remaining games are from the blitz tournament:

(W) Super Novag  
(B) George Hahn

1 c4 e5; 2 Nc3 Nf6;  
3 Nf3 Nc6; 4 g3 Bc5;  
5 Bg2 0-0; 6 d3 d5;  
7 cd Nd5; 8 0-0 Be6;  
9 Nd5 Bd5; 10 Qc2  
Qd6; 11 e4 Be6; 12  
Be3 Nd4; 13 Nd4 ed;  
14 Bf4 Qb6; 15 Rfcl  
Bd6; 16 e5 Be7; 17  
Qc7 Qc7; 18 Rc7 Bb4;  
19 Rb7 Rfc8; 20 Rb4  
1-0.

\* \* \*

(W) Dan McDaniel  
(B) Super Novag

1 e4 e5; 2 Nc3 Nf6;  
3 Bc4 Nc6; 4 f4 Ne4;  
5 Ne4 d5; 6 Bb3 de;  
7 fe Ne5; 8 d4 ed;  
9 Qh5 Qd4; 10 Nf3  
Qe4; 11 Kfl Qe2;  
12 Kgl Bc5 0-1.

\* \* \*

(W) Paul Friedrich  
(B) Super Novag

1 e4 c5; 2 Nf3 d6;  
3 d4 cd; 4 Nd4 Nf6;  
5 Bd3 e5; 6 Nb3 Be7;  
7 Nc3 0-0; 8 Nbd2 d5;  
9 0-0 Nc6; 10 ed Nd5;  
11 Ne4 f5; 12 Nec5  
Bf6; 13 Bc4 Ne7; 14  
Nd2 Qd6; 15 Ncb3 Be6;  
16 Nf3 Rac8; 17 Bd5  
Nd5; 18 Ng5 g6; 19  
Ne6 Qe6; 20 Rel Rfd8;  
21 Qe2 e4; 22 h3 Qd6;  
23 Nd4 Nf4; 24 Bf4

Qf4; 25 Ne6 Qd6; 26  
Nd8 Rd8; 27 Redl Qc6;  
28 Rd8 Bd8; 29 Qd2  
Bf6; 30 Rd1 Qb5;

And here, white lost on time using 5:43 against black's 3:29.

31 Qd5 Qd5; 32 Rd5  
b6; 33 Rd7 a5; 34  
Rd6 Be7; 35 Rb6 Bg5;  
36 Rb5 a4; 37 Rb4  
Bcl; 38 a3 Kf7; 39  
Kfl Ke6; 40 Ke2 Kd5;  
41 Kdl Bg5; 42 Ra4  
Be7; 43 Ke2 Bc5; 44  
b4 Bd6; 45 b5 Kc5;  
46 c4 Be5; 47 f3 ef;  
48 gf Bb2; 49 Kd3  
Kb6; 50 Ra6 Kb7; 51  
a4 Bg7; 52 Re6 Bf8;  
53 a5 Bb4; 54 a6 Ka7;  
55 Kd4 Bf8; 56 Kd5  
Bb4; 57 c5 Bd2; 58  
Re7 Ka8; 59 b6 1-0.

\* \* \*

(W) Super Novag  
(B) Dan McDaniel

1 c4 Nf6; 2 d4 e5; 3  
de Ng4; 4 Bf4 Nc6; 5  
Nf3 Bb4; 6 Nc3 Qe7; 7  
Qd5 Bc3; 8 bc f6; 9  
ef Nf6; 10 Qd2 d6; 11  
Qb2 Ne4; 12 e3 Nc5;  
13 Be2 0-0; 14 Bg5  
Qe4; 15 0-0 Bf5; 16  
Nd2 Qc2; 17 Qc2 Bc2;  
18 Racl Bd3; 19 Bd3  
Nd3; 20 Rcdl Rae8;  
21 e4 Nce5; 22 f4  
Nb2; 23 fe Nd1; 24  
Rdl Re5; 25 Be3 b6;  
26 a3 h6; 27 Rfl Ree8;  
28 Rf8 Rf8; 29 Bf2  
Kf7; 30 Kfl Ke6;

Here black lost on time.

31 Ke2 g5; 32 Ke3  
h5; 33 Nf3 g4; 34  
Nd4 Kd7; 35 Ne2 c5;  
36 Nf4 Kc6; 37 g3  
b5; 38 cb Kb5; 39  
Nh5 Rf3; 40 Ke2 Rc3;  
41 Nf6 Ra3; 42 Ng4  
Ral; 43 h4 Rh1; 44  
Kf3 a5; 45 Kg2 Rbl;



Novag - McDaniel  
 46 Ne3 a4; 47 g4 a3;  
 48 Nd5 Rb2; 49 Nc3  
 Kc4; 50 e5 de; 51  
 Kf3 Rf2; 52 Kf2 Kc3;  
 53 g4 a2; 54 h5 a1  
 (Q) 0-1.

\* \* \*

And just to fill out  
 the page, we have  
 some exciting games  
 from some "guests."

(W) Paul Keres  
 (B) Terpuogov

Moscow 1951

1 d4 d5  
 2 c4 Nc6  
 3 Nc3 Nf6  
 4 Nf3 Bg4  
 5 cd Nd5  
 6 e4 Bf3  
 7 gf Nb6  
 8 d5 Nb8

Black is using an  
 idea from Alekhine's  
 Defense; he wishes  
 to suck the pawns  
 forward to where  
 they may be attacked.

9 Bf4 c6  
 10 Qb3 N8d7  
 11 Rd1 Qc8  
 12 Bh3!

Black gets sucked  
 in return.

13 Na4 g6  
 14 Nb6 f5  
 ab

If 14...Nb6; 15 Be5  
 Rg8; 16 dc and the  
 rook is trapped.

15 ef Nc5  
 16 Qb6 e5  
 17 de Ra6  
 18 f6!! Ne6

If 18...Rb6; 19 f7  
 Ke7; 20 Bg5 mate.

19 Qb3 Kf7  
 20 0-0 c5  
 21 Rfel c4

22 Qb5 1-0  
 And tripled pawns  
 win again.

\* \* \*

(W) David Bronstein  
 (B) Lubo Ljubojevic

1 e4 Nf6  
 2 e5 Nd5  
 3 d4 d6  
 4 c4 Nb6  
 5 f4 de  
 6 fe c5  
 7 d5 e6  
 8 Nc3

Time to get the  
 pieces out.

9 cd ed  
 c4

The point. The black  
 bishop arrives at  
 c5, keeping the king  
 in the center.

10 Nf3 Bg4  
 11 Qd4 Bf3  
 12 gf Bb4  
 13 Bc4 0-0  
 14 Rg1 g6  
 15 Bg5 Qc7

Black has two threats,  
 to capture the bis-  
 hop at c4 and Bc5,  
 winning the rook.

16 Bb3! Bc5  
 17 Qf4! Bg1  
 18 d6 Qc8  
 19 Ke2 Bc5

White is a rook down.  
 How to continue?

20 Ne4 N8d7  
 21 Rcl Qc6  
 22 Rc5! Nc5  
 23 Nf6 Kh8  
 24 Qh4 Qb5  
 25 Ke3 h5  
 26 Nh5

Black has feasted too  
 well and must now  
 disgorge his loot.

27 ab Qb3  
 Nd5

28 Kd4 Ne6  
 29 Kd5 Ng5  
 30 Nf6 Kg7  
 31 Qg5 Rfc8  
 32 e6 fe  
 33 Ke6

The king is a fight-  
 ing piece.

34 d7 a5  
 35 Ng4 Ra6  
 36 Ke5 Rf5  
 37 Qf5 gf  
 38 d8(Q) fg  
 39 Qd7 Kh6  
 40 Qb7 Rg6  
 41 f4 1-0.

\* \* \*

(W) Frank Marshall  
 (B) Rogosin

1 e4 c5  
 2 b4 cb  
 3 a3 Nc6  
 4 ab Nf6?  
 5 b5 Nd4  
 6 c3 Ne6  
 7 e5 Nd5  
 8 c4 Ndf4  
 9 g3 Ng6  
 10 f4 Ngf4

The knight is lost  
 in any case.

11 gf Nf4  
 12 d4 Ng6  
 13 h4 e6  
 14 h5 and wins.

White did not move  
 a piece.

\* \* \*

(W) Khloyber  
 (B) Nagy

1 e4 c5  
 2 Nf3 Nc6  
 3 d4 cd  
 4 Nd4 Nf6  
 5 Nc3 d6  
 6 Bg5 a6  
 7 Qd2 Nd7  
 8 Be2 g6  
 9 Nd5 f6?  
 10 Ne6! Qa5  
 11 Ndc7 Kf7  
 12 Nd8 Kg7  
 13 Ne8 Kg8  
 14 Bc4 1-0.

*Shannon Read  
 4/8  
 Michael*