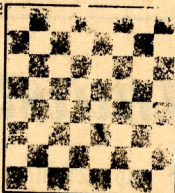


chess

by richard shorman



The fifth match game for the world championship between Petrosian and Spassky will surely be hailed as one of the challenger's best efforts.

Condensed notes by grandmaster Andrei Liliental translated from **Sovetsky sport**, April 25, 1969.

White: Boris Spassky, Black: Tigran Petrosian.

Moscow, 1969.

Queen's Gambit Declined

| | | | |
|-------------|---------|-------------|----------|
| 1 P-QB4 | N-KB3 | 16 BxP | N-R4 |
| 2 N-QB3 | P-K3 | 17 Q-B4 | Q-B2 |
| 3 N-B3 | P-Q4 | 18 Q-B5!(g) | BxB |
| 4 P-Q4 | P-B4(a) | 19 PxB | Q-B7(h) |
| 5 PxQP | NxP(b) | 20 Q-B4!(i) | QxP(j) |
| 6 P-K4(c) | NxN | 21 P-Q6 | QR-Q1 |
| 7 PxN | PxP | 22 P-Q7 | Q-B5 |
| 8 PxP | B-N5ch | 23 Q-B5 | P-KR3 |
| 9 B-Q2 | BxBch | 24 R-QB1 | Q-R3 |
| 10 QxB | 0-0 | 25 R-B7 | P-QN4(k) |
| 11 B-B4 | N-B3 | 26 N-Q4! | Q-QN3 |
| 12 0-0 | P-QN3 | 27 R-B8! | N-N2(l) |
| 13 QR-Q1(d) | B-N2 | 28 N-B6 | N-Q3(m) |
| 14 KR-K1 | R-B1(e) | 29 NxR! | NxQ |
| 15 P-Q5! | PxP(f) | 30 N-B6 | Resigns |

(a) The Tarrasch Defense to the Queen's Gambit again, but this time with Petrosian playing the Black side.

(b) In the second and fourth match games Spassky accepted an isolated **QP** with **5 . . . KPxP**.

(c) Once popular in the 1930's, this line has since been scrapped in favor of **6 P-K3**. Panov and Estrin evaluate the variation as harmless in the latest edition of their opening manual: "White achieves nothing with **6 P-K4** because of **6 . . . NxN 7 PxN PxP 8 PxP B-N5ch 9 B-Q2 BxBch**."

(d) In his return match with Euwe in 1937 Alekhine played **13 KR-Q1**. Spassky undoubtedly analyzed that game thoroughly during his pre-match preparations and settled upon this improvement on Alekhine's play beforehand.

(e) White used only seven minutes on his clock for this phase of the game. Black, who consumed a great deal more time on his moves, now permits White to open the center. Best is probably **14 . . . N-R4**, holding back **15 P-Q5** and driving off the Bishop.

(f) After **15 . . . N-R4** White has an effective piece sacrifice with **16 PxP** if Black answers with **16 . . . NxB**: **17 PxPch K-R1 (17 . . . KxP 18 Q-B4ch) 18 QxQ QRxQ 19 RxR RxR 20 P-K5**, and the pawns are unstoppable. Black successfully defends himself, however, after **16 . . . QxQ! 17 PxPch K-R1 18 NxQ NxB 19 NxN RxN 20 P-K5 B-B1!**

(g) Threatening **19 N-N5**.

(h) Petrosian apparently counted on this move to hold the position. White's passed Pawn cannot be blockaded by **19 . . . Q-Q3** because of **20 N-N5**, with the double threat of mate and **21 N-K4**.

(i) The correct decision. White's dangerous **QP** and active piece configuration more than compensate the loss of his **QRP**.

(j) Black has nothing better.

(k) Hoping to use his third rank for defense, but Spassky allows no respite.

(l) Of course not **27 . . . QxN 28 RxR**. On **27 . . . P-R3** Spassky had prepared an elegant finale: **28 R-K8 QxN 29 RxRch RxR 30 RxRch KxR 31 Q-B5ch! QxQ 32 P-Q8/Qmate**.

(m) White has foreseen this fork and crowns his good work with a splendid Queen sacrifice.

TOURNAMENT RESULTS

The fourth annual Peninsula Open, directed by international master George Koltanowski, attracted a record 168 chess players to the Lockheed main auditorium in Sunnyvale, April 26-27. Complete results:

USCF Open Division

1. Frank Thornally, Berkeley, and Rex Wilcox, San Jose, 4½-½, \$100 each.
2. David Blohm, Berkeley, Alan LaVergne, Menlo Park, Ira Pohl, Palo Alto, and Dennis Fritzinger, San Francisco, 4-1, \$10 each.

Best USCF "A"

1. Robert Hammie, Palo Alto, Al Raymond, San Francisco, and Ted Syrett, Menlo Park. 3-2, \$22 each.

CFNC "A" Division

1. Gary Pickler, Danville, 5-0, \$40.
2. Bill Montfort, Mt. View, 4-1, \$20.

CFNC "B" Division

1. William Chesney, San Jose, 4½-½, \$75 plus trophy.
2. Jim Bulash, Mt. View, Dan McLeod, San Bruno, Harry Radke, San Jose, and Ray Wheeler, Sparks (Nevada), 4-1, \$20 plus trophy each.

CFNC "C" Division

1. Jim Shearer, Livermore, 5-0, \$75 plus trophy.
2. Robert Uomini, Berkeley, Tom DeLons, Campbell, Randy Elder, Los Altos, and Stephen Gee, San Francisco, 4-1, \$10 plus trophy each.

Junior Division

14-15 Section

1. Carl Mueller, Los Altos, 4-1, trophy.
2. Dave Thompson, Sunnyvale, 3½-1½, trophy.

11-13 Section

1. Jeffrey White, San Luis Obispo, 4-1, trophy.
2. Brant Corenson, Los Gatos, 4-1, trophy.

10 and Under Section