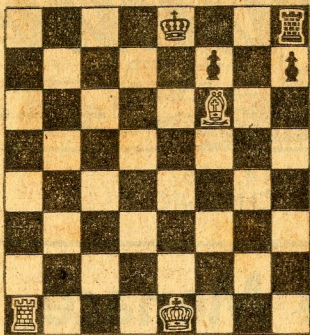


# Chess

By George Koltanowski

## PROBLEM

By A. G. Stubbs, England



15

White to play and mate in two moves. Solution Monday.

### WORLD CHAMPIONS (14)

1961-1963 BOTVINNIK.

1963-1967 PETROSIAN—Tigran Petrosian was born in 1929 in Armenian Russia. He combines the styles of Reti (Hypermodern), plays positionally like Nimzovitch and Capablanca, and defends like Steinitz. He builds his game on positional lines and possesses phenomenal endgame technique. He has great tactical alertness and inexhaustible patience. He hardly loses a game.

This, then, is a brief summary of the world champions and their individual characteristics . . . characteristics that possibly made them champions!?

Is the modern player better? I wouldn't say so. Each champion in his own time made use of what had been learned before him. To this he added his own talent. All these players would be outstanding in any period of time. They were and are the best and most successful chessplayers in the world.

As for future possibilities, mention must be made of our own Bobby Fischer the talented young American Grandmaster. He possesses a fully rounded style. He is both the tactician and strategist, an opening expert without peer and a virtuoso of the endgame. The U.S. champion can make it—and 1969 should see him as world champion!

The Presidio Service Club No. 1 announces its fifth Open Chess Tournament for Saturday and Sunday, June 17 and 18, 1967. A five round Swiss in three categories: A, B and C (beginners). Special prizes for Women and Junior (14 and under). No player above 2000 rating can enter. Medals and book prizes in each section. There is no entry fee! Send your name, address, phone number and what class you wish to play in to Miss Elizabeth de la Torre, Service Club No. 1, Building No. 69, Presidio of San Francisco, Calif. Get your entry in early! Each Monday night is chess club night at the Presidio Service Club No. 1 (opposite Letterman Hospital).

Next Monday evening, April 17, Richard Shorman, Hayward, will take on all comers in an exhibition, starting at 7 p.m. Bring your board and men. No board fee and winners will receive a prize each.

Coming up on April 22 and 23 an open tournament at Walnut Creek directed by Jerry Long. Entry fee \$4. The event takes place at the Recreation Center, Civic Drive, starting at noon. The fifth annual Hayward Chess Club open air chess festival

will be held on Sunday, June 25, in the George Weekes Memorial Park, Hayward. Section of four, with prize for each section. Dr. Anthony Savidy, Los Angeles, won the El Segundo Open last week. George Koltanowski will leave soon for exhibitions in Cleveland, sponsored by the Cleveland Plain Dealer (3), Morgantown, West Va., Pittsburgh, Phoenix, Santa Barbara, San Mateo, with visits to New York, Lisbon, Madrid, Barcelona, Torremolin, Palma de Majorca, Imperia (Italy), Brussels, Antwerp, London, etc.