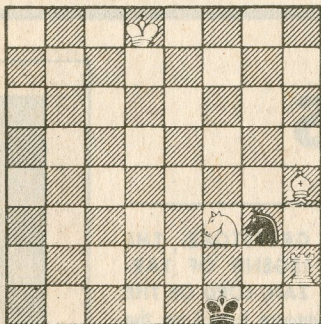


PROBLEM

By T. Siers, Germany



White to play and mate in three moves

COMING UP:

A Chess Festival will be held at Longfellow School Auditorium in Berkeley on Friday April 13, from 3-5 p.m. There will be a 100 board simultaneous exhibition against children from the ages of 6-13. The exhibition will be given by at least 26 persons, each taking on 3, 4, 5 and 6 children. This event is open and free to the public and Mrs. Elizabeth Shaughnessy is the coordinator.

Among those playing the children are: Hon. Eugene "Gus" Newport, Mayor of Berkeley; Narsai David, internation-

al gourmet chef; Steve Lustig, Berkeley School Board; Dan Boggan, Berkeley City Manager and Dr. John Jaurequi of Alta Bates Hospital. Also included will be Neil Levy, Karen Street, Myron Moscovitz, Steve Rubenstein, Richard O'Brien, Sam Gottlieb, Alfred Hansen, Josefa Heifetz, Rick Ventuglia, Henry van Bergen, Mrs. Jane Banks and many more.

A SMART SACRIFICE

Played in London, 1891

A Queen sacrifice is the prelude to a unique idea. Both of White's Knights retreated in order to force checkmate!

White: J.H. Blake

Black: G.A. Hooke

1.P-K4	P-K4	7.N-KN5	N-B3 ¹
2.N-KB3	P-Q3	8.B-B7ch	K-K2
3.B-B4	P-KB4	9.QxNch	KxQ
4.P-Q4	N-KB3	10.N-Q5ch	K-K4
5.N-B3	PxQP	11.N-KB3ch	KxP
6.QxP	B-Q2	12.N-B3mate	

(1) White now announced a mate in five moves.

Solution to Problem: 1.K-B7,N-K5; 2.B-K1 and 3.R-B2 mate.