

CHESS

BY ISAAC KASHDAN

INTERNATIONAL GRANDMASTER

Address letters to Chess Editor, L.A. Times
Times Mirror Square, Los Angeles,
Calif. 90053

SAN JOSE TEAM WINS COLLEGE TOURNEY

The team representing Cal State College at San Jose scored an impressive victory in the National Intercollegiate Chess Team Championship, which was held at Cal State College at Los Angeles.

San Jose won six matches and lost one to the University of Texas team by a score of 1½-2½. Texas had been the advance favorite, based on the individual ratings of its team members.

As it happened, Texas and Massachusetts Institute of Technology equalled the winning match score of 6-1. Texas lost only to MIT, and the latter only to San Jose.

The tie-breaking was based on individual points, of which the maximum was four in each match. San Jose scored 22-6, followed by Texas, 20-8, and MIT, 16½-11½.

Cornell University finished in fourth place with a match score of 5-2, and 18-10 in game points. Stanford headed a group with match totals of 4-3.

The Stanford game total was 18-10. The leading local contingent was one of three teams representing Cal. State College at Long Beach, which finished with 17-11.

Other teams with 4-3 scores in matches were: Cal. State at L.A., 16½-11½; Puerto Rico, 15½-12½; Columbia, 14½-13½, and UCLA, 14½-13½.

Special prizes were awarded for the best scores by individuals at each playing position or board. Leading the first board players was Tobler of Illinois Institute of Technology, who turned in a tally of 6-1.

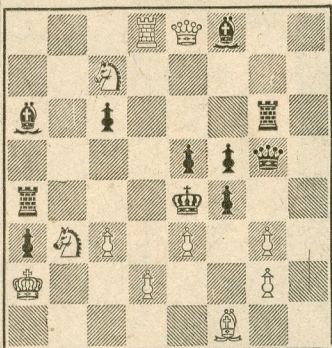
Other top performers and the schools they represented, were: Board 2—Sutherland, Berkeley, 5½-½; Board 3—Carter, Stanford, 5½-1½; Board 4—Berrios, Puerto Rico, 5-0, and Reserves—Binney, Penn State.

This was the first time the college tournament was held on the Pacific Coast. Credit for the idea, the planning and the success of the event is due almost entirely to Prof. Jose Marin of Long Beach.

JAN. 10, 1965
TIMES PROBLEM. 3657

By F. W. Nanning

BLACK 11



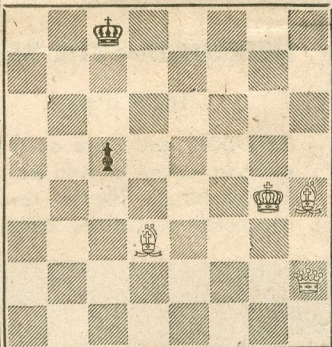
WHITE 11

A—White mates in two.
B—Move black rook from KN3 to KB3,
and White mates in two.

TIMES PROBLEM 3658

By W. Hagemann

BLACK 2



WHITE 4

White mates in three.

A slight change in the position of one piece makes a different problem in 3657. Two points will be allowed for each correct solution. White can act with surprising speed in the miniature three-mover.

SOLUTION TO PROBLEM 3651: N-B4.

SOLUTION TO PROBLEM 3652: K-N4.
If K-N7, 2 R-K1; if N-B7, 2 KRxP; if N-N6, 2 QRxQP.

SOLVERS' LIST

Five Points—B. Aabor, E. Andres, Mrs. R. Coogan, D. A. Daggett, T. Dana, G. E. Engebretsen, Mrs. C. H. Eunice, P. Flick, D. Gosiewski, W. H. Griffith, Dr. J. A. Healy, J. B. Klein, H. N. Lewis, P. E. Rice, R. Roslin, E. Scherzer, G. Sieger, C. E. Stern, C. Tuttle, C. Wilson.

Four Points—J. L. Jessel.

Three Points—W. E. Barnes, F. Boschan, C. Crail, R. Evans, H. Oster, L. S. Peterson, I. J. E. Toeroek.

Two Points—F. Aks, E. Knuth, N. Lesser, M. Lucas.

One Point—G. J. Castleberry, V. W. Damm, J. Foley, S. D. Frierson, R. A. Margolin, D. R. Moriarty, J. Stevens, J. Wood, C. Yanko.

Marin was a L.A. when he initiated the move to hold the tournament there more than a year ago. Though transferred to Long Beach, he persevered, induced others to work with him, and continued to take care of the multitudinous details involved.

Director of the tournament was Gordon Barrett. He also spent many hours in preliminary arrangements as well as handling all the details of the play.

RESHEVSKY TO EXHIBIT

Samuel Reshevsky of Spring Valley, N. Y., former U.S. chess champion, will visit Los Angeles next month on his annual cross-country exhibition tour.

Two engagements have been scheduled for Los Angeles. In the first, Reshevsky will play at UCLA Friday afternoon, Feb. 19. We shall furnish further details when available.

On Sunday, Feb. 21, Reshevsky will be at the Herman Steiner Chess Club in an exhibition for juniors only. There will be no charge, but applications should be made in advance.

Anyone under 21 interested in playing against the grandmaster should write to Piatigorsky Foundation, 400 S. Bundy Drive, L.A. 49. Give name, age, school attended, and U.S. Chess Federation rating, if any.

BELGRADE TOURNAMENT

One of the strongest tournaments held last year was in Belgrade, Yugoslavia. Of the 18 participants 11 were grandmasters and the others international masters.

Three of the entrants were Russians, and as has been happening with almost monotonous regularity, one of them was the winner.

Boris Spassky, former world junior champion, finished with a score of 13-4, winning nine games and drawing eight. He was the only undefeated player in the event.

Second place was shared by Victor Korchnoi of Russia and Boris Ivkov of Yugoslavia, who finished with 11½-5½. Ivkov lost only once, to his compatriot Svetozar Gligoric, while winning seven games and drawing nine.

Korchnoi evidently played more aggressive chess. He was downed three times, by Ivkov, by the third Russian representative, David Bronstein, and by J. Flesch of Hungary. He made up by winning nine times and drawing five.

Gligoric finished in fourth place with 11-6. For years he was considered one of the greatest players in the world and certainly tops in Yugoslavia. But Ivkov beat him out in the Inter-

zonal Tournament as well as at Belgrade.

Bent Larsen of Denmark, who had tied for first in the Interzonal at Amsterdam, could do no better than tie for fifth with A. Matanovich of Yugoslavia, each scoring 10-7. Bronstein tied at 9½-7½ with Pa Benko, the only American representative in the event.

The following games are from the tournament.

ENGLISH OPENING

Larsen White	Spassky Black	Larsen White	Spassky Black
1-P-QB4	P-K4	22-P-B4	Q-R5
2-P-KN3	N-QB3	23-BxNP	BxP
3-B-N2	P-KN3	24-QR-N	NxP
4-N-QB3	B-N2	25-Q-KN3	Q-B3
5-P-K3	KN-K2	26-P-N5	B-Q5ch
6-KN-K2	O-O	27-K-R	RxRch
7-O-O	P-Q3	28-RxR	Q-B4
8-P-Q4	PxP	29-R-KB	BxB
9-PxP	B-N5	30-RxN	Q-K4
10-P-B3	B-B4	31-R-B	R-K
11-P-KN4	B-B	32-Q-KB3	N-Q
12-B-B4	P-Q4	33-Q-QN3	B-K6
13-P-B5	P-N3	34-BxP	N-K3
14-N-N5	B-QR3	35-N-N4	QxNP
15-NxBP	BxN	36-N-B6	N-B5
16-QxB	NxP	37-B-B3	B-B4
17-Q-Q3	R-B	38-Q-B2	R-K6
18-PxP	PxP	39-Q-N	RxB
19-B-K3	N(2)-B3	40-Q-N8ch	K-N2
20-N-R6	R-K	Resigns	
21-KR-K	N-K3		

RUY LOPEZ

Gligoric White	Matanovic Black	Gligoric White	Matanovic Black
1-P-K4	P-K4	25-Q-R	P-B3
2-N-KB3	N-QB3	26-Q-N	P-N4
3-B-N5	P-QR3	27-N-Q2	Q-B2
4-B-R4	N-B3	28-N-K4	N-Q3
5-O-O	B-K2	29-NxN	QxN
6-R-K	P-QN4	30-B-B5	B-K
7-B-N3	P-Q3	31-P-KR4	B-B2
8-P-B3	O-O	32-Q-K4	P-QR4
9-P-KR3	N-QR4	33-PxP	RpxP
10-B-B2	P-B4	34-P-N3	R(2)-K
11-P-Q4	Q-B2	35-K-N2	R-R
12-QN-Q2	B-Q2	36-R-KR	RxR
13-N-B	KR-K	37-RxR	R-R
14-P-QN3	P-N3	38-RxR	KxR
15-B-N5	N-R4	39-K-N	K-N2
16-BxB	RxB	40-Q-R	B-N3
17-N-K3	N-KB3	41-BxB	KxB
18-Q-Q2	K-N2	42-Q-R8	P-B4
19-QR-Q	N-N2	43-Q-N8ch	K-B3
20-PxKP	PxP	44-Q-R7	P-N5
21-P-B4	P-R3	45-Q-R6ch	K-K2
22-N-Q5	NxN	46-QxQch	KxQ
23-KPxN	Q-Q3	47-K-N2	P-B5
24-Q-B3	P-N5	48-P-B3	Resigns

GRUENFELD DEFENSE

Bronstein White	Korchnoi Black	Bronstein White	Korchnoi Black
1-P-Q4	N-KB3	22-KR-K	Q-KB
2-P-QB4	P-KN3	23-Q-KN3	N-B3
3-N-QB3	P-Q4	24-P-KR4	K-R
4-PxP	NxP	25-R-QB	N-N5
5-P-K4	NxN	26-N-B7	R-B
6-PxN	B-N2	27-P-R5	NxP
7-B-QB4	P-QB4	28-R-B2	P-QN4
8-N-K2	O-O	29-N-K6	Q-K
9-O-O	N-B3	30-RxR	QxR
10-B-K3	N-R4	31-PxP	PxP
11-B-Q3	P-N3	32-Q-R4ch	K-N
12-Q-R4	P-K4	33-Q-N4	P-N4
13-QR-Q	B-Q2	34-Q-B5	Q-Q2
14-Q-R3	BpxP	35-P-K5	PxP
15-PxP	PxP	36-QxPch	K-R
16-BxP	BxB	37-QxPch	K-N
17-NxB	B-N5	38-Q-N5ch	K-R
18-B-K2	BxB	39-Q-R5ch	R-R2
19-NxB	Q-K	40-Q-K5ch	K-N
20-N-B3	P-B3	41-Q-N5ch	K-R
21-N-Q5	R-B2	42-Q-B6ch	Resigns

USCF OPEN, BOSTON

KING'S FIANCHETTO DEFENSE

Benko White	Suttles Black	Benko White	Suttles Black
1-N-KB3	P-KN3	19-Q-N3ch	K-R
2-P-K4	B-N2	20-QxN	N-N4
3-P-Q4	P-Q3	21-N-R5	R-B6
4-N-B3	P-QB3	22-Q-Q2	RxRP
5-B-K2	N-Q2	23-B-K2	R-R5
6-O-O	N-R3	24-QR-Q	B-N5
7-P-KR3	O-O	25-BxB	RxB
8-B-K3	P-B3	26-N-N3	Q-N3
9-Q-Q2	N-B2	27-QxP	N-B6ch
10-P-Q5	P-KB4	28-PxN	RxNch
11-KPxP	NPxP	29-K-R2	R-N4
12-N-Q4	BxN	30-P-KB4	R-R4ch
13-BxB	PxP	31-K-N2	P-K5
14-NxP	P-K4	32-R-KN	R-Nch
15-B-QB3	P-B5	33-K-B	Q-N4ch
16-B-B4	N-B4	34-R-Q3	RxRch
17-NxP	N-K5	35-KxR	Resigns
18-Q-K3	NxB		