

CHESS

BY ISAAC KASHDAN

INTERNATIONAL GRANDMASTER
Address Letters to Chess Editor, L.A. Times
Times Mirror Square
Los Angeles, Calif. 90053

40 TEAMS COMPETE IN SO. CALIF. LEAGUE

The annual interclub team matches of the Southern California Chess League have started with a record entry of 40 teams competing in five divisions.

The highest rated teams in Division 1 will complete their matches in a single weekend. This was an innovation last year, and proved very successful, attracting a number of strong players who prefer weekend events.

The dates are April 28 and 29 at the San Fernando Valley Chess Club, 10919 Saticoy in Sun Valley. The Student Chess Club, league champions last year, will again field a strong team.

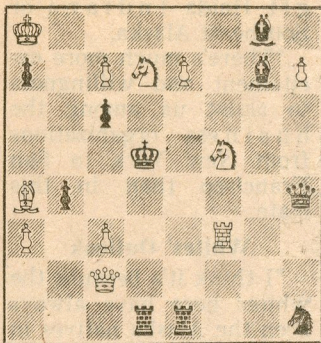
The challengers are the Rockwell Chess Club, formerly known as NAR Valley, and teams from Long Beach, Riverside and West Covina. Five rounds will be played, with four men on each team, starting at 9 a.m. Saturday and concluding Sunday afternoon.

Division 2 will be the strongest of the groups playing weekly rounds. Time and place of each match depends on a schedule which allows each club to play in its regular headquarters about half the time.

Both the Student and Rockwell clubs are fielding two teams each in this division. Long Beach and West Covina are also entered, as are Pasadena and Simi Valley.

A new provision allows players to be on the rosters

April 15, 1973
TIMES PROBLEM 4173
By V. Bartolovic
BLACK 10



WHITE 11

White mates in three.

White's threats are mainly along the diagonals, and the black king is checked from all four sides.

SOLUTION TO PROBLEM 4172: B-K5

ready to work with aspiring organizers or directors, to give them the benefit of his wide experience.

WOMEN'S TOURNNEY

Lina Grumette, who recently organized the Chess Set in Hollywood, will run the Women's Southern California Championship there over the weekend of May 4 to 6. Six rounds will be played starting at 7:30 p.m. that Friday.

Cash prizes of \$125 and a number of merchandise prizes are offered, with every participant to receive an award. The entrance fee is \$5, which must be sent by April 27 to So. Cal. Chess League, 12536 Daryl Ave., Granada Hills.

HIGH SCHOOL TOURNNEY

A new provision allows players to be on the rosters of both Division 1 and Division 2 teams. Thus an individual can have his fill of chess over the Division 1 weekend, then play occasionally on a lower rated lineup. The overall rating of the team in the latter case must not exceed the limit set by the league.

The number of entries in Division 3 and the distances between some of the clubs made it essential to set up an east and a west group. Eight clubs were left in each group.

Two teams from West Covina will be in the east group. The others are Bechtel, Long Beach, Ontario, Pasadena, Riverside and San Gabriel.

In the west group Rockwell will have a double entry, with single teams from Alondra, Student and TRW Systems Chess Clubs, and from Conejo Valley, San Fernando Valley and Simi Valley.

Division 4, which gives the lower rated players the opportunity to participate in interclub activity, will have three different teams from Rockwell and two from San Pedro.

The others, making up the complement of 10 teams, are Bank of America, Conejo Valley, Occidental, San Fernando Valley and Simi Valley.

The Rockwell Corp. is easily the leader in numbers involved, with eight teams entered. The club, which meets Thursdays at 8900 De Soto in Canoga Park, is one of the most active in the area, averaging close to 100 players at each meeting.

The team matches are one of the major activities of the SCCL, which is the coordinating body for chess clubs in this area.

At a recent meeting, Gordon Barrett was reelected president of the league. Other officers are Paul Polland, vice-president; Henry Shipin, treasurer; David Argall, secretary, and Ronald Pease, tournament director.

BUDD IN HALL OF FAME

Once each year the clubs belonging to the SCCL vote to elect a personality from this area into the California Chess Hall of Fame. This is a signal honor awarded to those whose efforts have been devoted for years to the development and encouragement of chess.

The award for 1973 went to Carl Budd, president of the Santa Monica Bay Chess Club. Budd is a quiet and unassuming individual who shies from publicity, but well deserves the honor.

Under his leadership the Santa Monica club has grown to be the most active in the area. The club sponsors a number of tournaments which attract a greater following each year, including the American Open Championship, one of the major events on the national calendar.

Budd can often be seen in clubs other than his own, helping in any way he can. No task is too menial, if it helps the game. He is always

HIGH SCHOOL TOURNEY

The 22nd annual team championship tournament of the Los Angeles City High Schools will be held on Saturday, April 28 at Los Angeles High School, Olympic and Rimpau Blvds.

Any school in the city system may send from four to eight players, who will compete on an individual basis. The four highest scores for each school will be added to determine the team championship.

The players will be divided into sections, so that those from the same school will not meet each other. Each section will have a five round schedule with Swiss system pairings.

Rounds will be limited to one hour each, after which a team of master and expert adjudicators will decide the unfinished games.

The Piatigorsky Foundation will present prizes to the winners in each section, as well as to the team champions. Arthur Drucker will direct the tournament.

LONE PINE TOURNEY

ENGLISH		OPENING	
Evans	Grete	Evans	Grete
White	Black	White	Black
1-P-QB4	P-KN3	19-P-B4	N-R5
2-N-QB3	B-N2	20-B-Q5	BxB
3-P-KN3	P-K4	21-NxB	P-B3
4-B-N2	P-Q3	22-PxP	PxP
5-N-B3	N-QB3	23-RxR	QxR
6-P-Q3	P-B4	24-N(5)-N4	P-Q4
7-O-O	N-B3	25-P-K3	P-Q5
8-R-N1	P-QR4	26-PxP	NxP
9-P-QR3	O-O	27-Q-N4	N(R)-N7
10-P-QN4	PxP	28-NxP	Q-Q3
11-PxP	P-R3	29-P-Q5	P-R4
12-P-N5	N-K2	30-Q-Q1	N-R5
13-B-Q2	B-K3	31-B-N4	Q-B3
14-N-K1	R-N1	32-K-R1	Q-N4
15-N-B2	P-B5	33-Q-Q2	R-B2
16-PxP	PxP	34-B-K7	N-R6
17-BxBP	N-R4	35-Q-K2	Q-Q7
18-B-Q2	N-B4	Resigns	

SICILIAN		DEFENSE	
Mengarini	Cleghorn	Mengarini	Cleghorn
White	Black	White	Black
1-P-K4	P-QB4	15-B-N5	R-K1
2-P-KN3	N-QB3	16-P-QB4	PxKP
3-B-N2	P-KN3	17-NxP	Q-B1
4-N-K2	B-N2	18-NxB	KxN
5-O-O	P-K3	19-R-Q6	N-B6ch
6-P-QB3	KN-K2	20-BxN	PxB
7-P-Q3	O-O	21-Q-Q7	N-B4
8-B-K3	P-N3	22-B-B6ch	K-R3
9-P-Q4	PxP	23-RxR	QxR
10-NxP	B-QR3	24-R-Q1	Q-K7
11-R-K1	N-K4	25-P-KN4	R-K1
12-N-R3	P-Q4	26-P-R3	QxPch
13-Q-R4	B-N2	27-KxQ	R-K7ch
14-QR-Q1	P-QR3	Resigns	

PIRC-ROBATSCH DEFENSE			
Mengarini		Mengarini	
White	Martinovsky	White	Martinovsky
1-P-Q4	N-KB3	19-B-KR3	P-KR4
2-N-KB3	P-KN3	20-N-K3	R-Q1
3-P-KN3	B-N2	21-NxN	PxN
4-B-N2	O-O	22-BxP	NxP
5-O-O	P-Q3	23-NxN	RxQ
6-QN-Q2	QN-Q2	24-BxQ	RxB
7-P-K4	P-K4	25-RxP	R-Q7
8-P-B3	R-K1	26-B-B1	RxRP
9-R-K1	P-B3	27-R-Q1	R-K1
10-P-N3	Q-B2	28-N-N4	RxKP
11-B-QR3	P-QN4	29-N-R6ch	K-B1
12-P-B4	P-QR3	30-R-Q7	R-Q5
13-R-QB1	B-N2	31-RxPch	K-K1
14-P-B5	Q-R4	32-R-N5	R-K8ch
15-B-N2	PxBP	33-K-N2	RxB
16-PxKP	N-N5	34-RxKNP	RxPch
17-N-B4	Q-B2	35-RxR	P-B4ch
18-Q-Q6	Q-B1	Resigns	

PIRC-ROBATSCH DEFENSE			
Jones	Fritzinger	Jones	Fritzinger
White	Black	White	Black
1-P-K4	P-KN3	18-P-KN4	Q-Q2
2-P-Q4	B-N2	19-PxRP	P-B3
3-N-QB3	P-Q3	20-Q-N2	K-R1
4-P-B4	N-QR3	21-B-K3	R-KN1
5-B-K3	N-B3	22-P-R6	BxP
6-N-B3	O-O	23-Q-B2	BxBch
7-P-K5	N-KN5	24-QxB	K-R2
8-B-N1	P-KR4	25-Q-B4	R-N3
9-Q-Q2	P-R3	26-KR-N1	QR-KN1
10-O-O-O	P-QN4	27-Q-R-4ch	R-R3
11-N-K4	B-B4	28-QxRch	KxQ
12-N-N3	B-Q2	29-RxR	Q-K3
13-P-KR3	N-R3	30-QR-N1	K-R2
14-B-Q3	P-Q4	31-R(1)-N7ch	K-R3
15-P-B5	KNxP	32-R-N6ch	K-R2
16-NxN	BxN	33-N-N5ch	Resigns
17-BxB	PxB		