

# CHESS

BY ISAAC KASHDAN  
INTERNATIONAL GRANDMASTER  
Address letters to Chess Editor, L.A. Times  
Times Mirror Square, Los Angeles,  
Calif. 90053

## SANTA MONICA AGAIN DOWNS STEINER CLUB

The return match between teams representing the Santa Monica Bay Chess Club and the Herman Steiner Chess Club again resulted in a decisive victory for Santa Monica, by the score of 6½-3½.

With 10 of the strongest players of the area on each side, the match took place last Sunday afternoon at the Del Mar Club in Santa Monica.

The frequent tournaments at the Santa Monica club evidently keep their masters and experts in good form. Though no title was at stake, the double victory establishes Santa Monica as the top rated club.

Following are the detailed results and a game from the event.

| SANTA MONICA  |    | STEINER       |    |
|---------------|----|---------------|----|
| C. Henin      | ½  | J. Moskowitz  | ½  |
| R. Martin     | 1  | Z. Kovacs     | 0  |
| N. Lessing    | 0  | I. Rivise     | 1  |
| A. Troy       | ½  | C. Pilnick    | ½  |
| R. Currie     | 1  | M. Gordon     | 0  |
| L. Simon      | ½  | L. Kupersmith | ½  |
| A. Spiller    | 1  | J. Kliger     | 0  |
| J. Kangleon   | 1  | S. Almgren    | 0  |
| C. Stani      | ½  | E. Warner     | ½  |
| F. McReynolds | ½  | N. Robinson   | ½  |
|               | 6½ |               | 3½ |

### SICILIAN DEFENSE

| Martin   | Kovacs | Martin   | Kovacs  |
|----------|--------|----------|---------|
| White    | Black  | White    | Black   |
| 1-P-K4   | P-QB4  | 20-R-R   | B-B     |
| 2-N-KB3  | P-Q3   | 21-NxN   | QxN     |
| 3-P-Q4   | PxP    | 22-R-B2  | R-N6    |
| 4-NxP    | N-KB3  | 23-P-QB5 | R-Q     |
| 5-N-QB3  | P-QR3  | 24-K-R   | P-N3    |
| 6-B-K2   | P-K3   | 25-B-B4  | QR-Q6   |
| 7-B-K3   | B-K2   | 26-BxR   | PxB     |
| 8-O-O    | O-O    | 27-R-B4  | B-N2    |
| 9-P-B4   | Q-B2   | 28-R-Q   | Q-N4    |
| 10-Q-K   | N-B3   | 29-R-Q4  | RxR     |
| 11-Q-B2  | B-Q2   | 30-BxR   | Q-N6    |
| 12-QR-Q  | P-QN4  | 31-R-Q2  | B-QB3   |
| 13-P-QR3 | QR-N   | 32-Q-K3  | B-QN4   |
| 14-P-R3  | P-N5   | 33-P-B6  | Q-Q4    |
| 15-PxP   | NxNP   | 34-P-B7  | Q-B3    |
| 16-R-Q2  | P-Q4   | 35-B-N6  | B-N5    |
| 17-P-K5  | N-K5   | 36-R-Q   | Q-B7    |
| 18-NxN   | PxN    | 37-R-QB  | Resigns |
| 19-P-B4  | N-B3   |          |         |

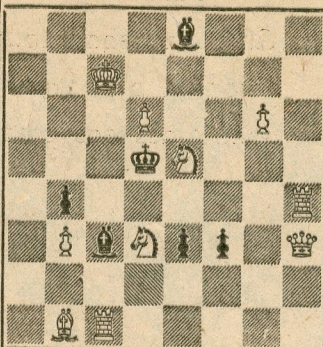
## IVKOV, UHLMANN LEAD IN ZAGREB TOURNEY

One of the strongest international master tournaments of the year is taking place in Zagreb, Yugoslavia. World champion Tigran Petrosian of the USSR is among the 20 competi-

May 16, 1963

TIMES PROBLEM 3693

By K. T. Boersma  
BLACK 6



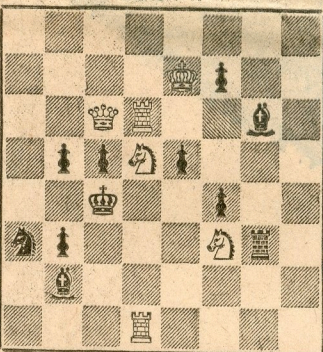
WHITE 10

White mates in two.

TIMES PROBLEM 3694

By W. A. Whyatt

BLACK 11



WHITE 6

White mates in three.

No. 3693 has a fine key and remarkably varied mates. The self blocks by the two bishops is an odd point in 3694, in addition to the main sacrifice variation.

SOLUTION TO PROBLEM 3687: R-N3  
SOLUTION TO PROBLEM 3688: K-K4  
Threat, 2 Q-K1ch; if K any, 2 Q-N1ch;  
if B-B3ch, 2 K-B5; if P-Q4ch, 2 K-B4.

### SOLVERS' LIST

Five points—F. Aks, E. Andres, F. Boschan, P. J. Burton, H. A. R. Carleton, D. Chan, Mrs. R. Cooper, D. A. Daggett, G. R. Figueroa, F. Forthoffer, J. E. Hardt, Dr. J. A. Healy, E. P. Kelty, M. Lucas, J. Nishimi, I. E. Nordstrom, J. N. Parnell, R. G. Pawley, A. D. Rich, R. Roslin, C. E. Stern, D. G. Stockwell, R. V. Taylor, S. Thayer, A. Yamada.

Three points—Mrs. H. Paul. Two points—J. Foley, E. Knuth. One point—R. Cameron, M. W. MacLeod, R. L. Young.



ors representing nine countries.

Leading the event shortly before the final round were Boris Ivkov of Yugoslavia and Wolfgang Uhlmann of East Germany, who were tied with scores of 12½-5½.

Petrosian was tied for third at 11½-6½ with Bruno Parma of Yugoslavia and Lajos Portisch of Hungary. A loss to Portisch had pulled Petrosian down after he had held the top position.

Other leading scorers were David Bronstein of the USSR, 11-7, and Bent Larsen of Denmark, 10½-7½. Arthur Bisguier of New York, the only American in the tournament, was in the second half with 7½-10½.

Following are games from the event.

#### SICILIAN DEFENSE

| Bisguier<br>U.S.A.<br>White | Larsen<br>Denmark<br>Black | Bisguier<br>U.S.A.<br>White | Larsen<br>Denmark<br>Black |
|-----------------------------|----------------------------|-----------------------------|----------------------------|
| 1-P-Q4                      | P-KN3                      | 11-Q-R4                     | KPxP                       |
| 2-P-KB4                     | B-N2                       | 12-B-R6                     | KN-B3                      |
| 3-P-KB4                     | P-Q3                       | 13-N-N5                     | N-K4                       |
| 4-N-KB3                     | N-KB3                      | 14-RxN                      | B-R                        |
| 5-B-Q3                      | O-O                        | 15-R-B                      | R-K                        |
| 6-O-O                       | QN-Q2                      | 16-B-B8                     | B-B3                       |
| 7-P-K5                      | N-K                        | 17-RxB                      | PxR                        |
| 8-Q-K                       | P-QB4                      | 18-Q-R6                     | RxB                        |
| 9-P-B5                      | PxKP                       | 19-Q-R7                     | male                       |
| 10-PxNP                     | RPxP                       |                             |                            |

#### QUEEN'S GAMBIT DECLINED

| Gligoric<br>Yugoslavia<br>White | Portisch<br>Hungary<br>Black | Gligoric<br>Yugoslavia<br>White | Portisch<br>Hungary<br>Black |
|---------------------------------|------------------------------|---------------------------------|------------------------------|
| 1-P-Q4                          | P-Q4                         | 20-B-B2                         | N-B5                         |
| 2-P-QB4                         | PK3                          | 21-Q-B3                         | KR-Q                         |
| 3-N-QB3                         | N-KB3                        | 22-QR-Q                         | RxR                          |
| 4-B-N5                          | B-K2                         | 23-BxR                          | Q-B3                         |
| 5-P-K3                          | O-O                          | 24-P-K5                         | Q-K2                         |
| 6-N-B3                          | P-KR3                        | 25-N-Q4                         | B-Q4                         |
| 7-BxN                           | BxB                          | 26-B-N4                         | Q-N4                         |
| 8-R-B                           | P-B3                         | 27-P-K6                         | N-Q3                         |
| 9-B-Q3                          | PxP                          | 28-PxPch                        | BxP                          |
| 10-BxP                          | N-Q2                         | 29-N-K6                         | BxN                          |
| 11-N-K4                         | P-K4                         | 30-BxBch                        | K-R                          |
| 12-NxBch                        | QxN                          | 31-R-K5                         | Q-B3                         |
| 13-O-O                          | Q-K2                         | 32-Q-K3                         | R-KB                         |
| 14-P-K4                         | PxP                          | 33-B-N3                         | N-N4                         |
| 15-QxP                          | N-N3                         | 34-R-K6                         | Q-R5                         |
| 16-B-N3                         | B-N5                         | 35-P-N3                         | QxRP                         |
| 17-Q-K3                         | QR-Q                         | 36-Q-K5                         | P-QR4                        |
| 18-KR-K                         | R-Q2                         | 37-R-K8                         | Resigns                      |
| 19-P-KR3                        | B-K3                         |                                 |                              |

#### KING'S INDIAN DEFENSE

| Gligoric<br>Yugoslavia<br>White | Larsen<br>Denmark<br>Black | Gligoric<br>Yugoslavia<br>White | Larsen<br>Denmark<br>Black |
|---------------------------------|----------------------------|---------------------------------|----------------------------|
| 1-P-K4                          | P-QB4                      | 14-PxP                          | PxP                        |
| 2-N-KB3                         | P-K3                       | 15-B-B2                         | B-B4                       |
| 3-P-Q4                          | PxP                        | 16-B-B4                         | Q-N3                       |
| 4-NxP                           | N-QB3                      | 17-N-Q5                         | QxP                        |
| 5-N-QB3                         | P-Q3                       | 18-BxB                          | NxB                        |
| 6-B-K3                          | N-B3                       | 19-RxP                          | RxR                        |
| 7-B-K2                          | B-K2                       | 20-N-K7ch                       | K-B                        |
| 8-O-O                           | O-O                        | 21-BxR                          | Q-N3                       |
| 9-P-B4                          | B-Q2                       | 22-Q-R4                         | NxPch                      |
| 10-Q-K                          | NxN                        | 23-K-B                          | KxB                        |
| 11-BxN                          | B-B3                       | 24-NxB                          | QxN                        |
| 12-B-Q3                         | N-Q2                       | Resigns                         |                            |
| 13-R-Q                          | P-K4                       |                                 |                            |

#### EXPERT CANDIDATES

The annual Expert Candidates Tournament, organized by the Southern California Chess League, will start this week with seven preliminary sections to be held in as many clubs throughout the Southland.

The host clubs are Downey, El Segundo, Monterey Park, Riverside-San Bernardino, San Fernando Valley, Steiner and Tournament. Five rounds will be played at each club, at the rate of one a week.

Anyone can enter who is not rated with the U. S. Chess Federation, or whose rating is less than 2,000. The entry fee is \$5, with membership required in the USCF. The prizes are expected to total about \$350.

The leaders in each section will qualify for the finals, which will be held over the weekend

of June 19 and 20, when five rounds will be played.

#### CHESS CLUB NOTES

The Tournament Club, 3554 S. Western Ave., is initiating two series of tournaments, to continue its policy of holding different events every day of the week.

A USCF rated tournament will be held every Saturday and Sunday, with rounds starting at 10 a.m., 2 p.m. and 7 p.m. The entry fee will be \$5, with cash prizes based on the entries.

Non-rated open tournaments will be held Monday, Tuesday and Wednesday afternoons, with registration at noon and play starting at 12:30 p.m. The entry fee will also be \$5.

The City Terrace Chess Club will start its championship tournament at 7:45 p.m. Wednesday at 1126 N. Hazard St. It will be a five-round Swiss system to be played on consecutive Wednesdays.

The entry fee is \$3.75. There will be a trophy for the winner, as well as a number of cash prizes.

Horace Keesey scored 6-1 to win the second annual Garden Grove Open Tournament, held at the Garden Grove Chess Club, which meets Wednesday evenings in the Euclid Park Recreation Building, Euclid at Stanford in Garden Grove.

Richard J. Plock, Bob Heisler and Thomas M. Fries tied for second with 5-2. In another tie at 4½-2½ were F. S. Hazard, C. E. Joyce and F. E. Sleep.

Don Stephenson won the championship of the Long Beach Chess Club, finishing with a score of 7½-1½. Al Raymond, who had been leading the tournament, lost to Stephenson in the final round, to finish second with 7-1.

#### HIGH SCHOOL TOURNEY

The high school Tournament of Champions, sponsored by the Piatigorsky Foundation, will start at 10 a.m. Saturday at the Herman Steiner Chess Club, 8801 Cashio St. Only winners of tournaments in the Los Angeles City high schools are eligible.

#### THIRD MATCH GAME NIMZO-INDIAN DEFENSE

| Geller<br>White | Smyslov<br>Black | Geller<br>White | Smyslov<br>Black |
|-----------------|------------------|-----------------|------------------|
| 1-P-Q4          | N-KB3            | 31-R-K          | P-B7             |
| 2-P-QB4         | P-K3             | 32-B-B8         | KxB              |
| 3-N-QB3         | B-N5             | 33-Q-R8ch       | B-N              |
| 4-P-K3          | P-B4             | 34-N-R7ch       | K-B2             |
| 5-N-B3          | O-O              | 35-P-K6ch       | QxP              |
| 6-B-Q3          | P-QN3            | 36-N-N5ch       | K-K2             |
| 7-P-Q5          | PxP              | 37-NxQ          | BxN              |
| 8-PxP           | NxP              | 38-Q-N7ch       | K-Q3             |
| 9-BxP ch        | KxB              | 39-R-Q3ch       | N-Q5             |
| 10-QxB          | BxN ch           | 40-R-QB         | B-Q4             |
| 11-PxN          | Q-B3             | 41-RxN          | PxR              |
| 12-O-O          | N-B3             | 42-RxP          | QR-B             |
| 13-P-K4         | K-N              | 43-R-Q2         | R-B8 ch          |
| 14-Q-R5         | B-R3             | 44-KB-2         | R-K5             |
| 15-R-K          | B-B5             | 45-QxP ch       | B-K3             |
| 16-B-N5         | Q-N3             | 46-Q-N5         | K-B3             |
| 17-Q-R4         | P-B3             | 47-P-KR3        | K-N4             |
| 18-B-B4         | KR-K             | 48-Q-N7         | P-R4             |
| 19-N-Q2         | B-B2             | 49-RxP          | R-B7ch           |
| 20-R-K3         | Q-R2             | 50-K-N          | R-K8ch           |
| 21-Q-N4         | P-Q4             | 51-K-R2         | R(K)-K7          |
| 22-R-R3         | Q-N3             | 52-P-KR4        | RxRP             |
| 23-Q-R4         | B-K3             | 53-P-R5         | RxP ch           |
| 24-R-N3         | Q-B2             | 54-QxR          | RxQ ch           |
| 25-B-R6         | P-N3             | 55-KxR          | P-R5             |
| 26-P-KB4        | P-B4             | 56-P-R6         | B-N              |
| 27-P-K5         | P-Q5             | 57-R-Q8         | B-R2             |
| 28-N-B3         | PxP              | 58-R-Q7         | B-N3             |
| 29-R-R3         | Q-R2             | 59-R-QR7        | K-N5             |
| 30-N-N5         | Q-K2             | 60-R-KN7        | Resigns          |