

CHESS

BY ISAAC KASHDAN

INTERNATIONAL GRANDMASTER

Address letters to Chess Editor, L.A. Times
Times Mirror Square, Los Angeles,
Calif. 90053

NATIONAL OPEN AT STARDUST HOTEL

The Stardust Hotel in Las Vegas will be the scene of a new chess tournament which should prove one of the most popular ever held in this country.

The event is the National Open Chess Championship. It will be held in the Stardust Auditorium during the week of Feb. 7 to 13.

The guaranteed cash prizes will total \$4500, the largest amount ever offered for an open competition of this nature. Players of every category will have a chance to share in the distribution.

Already entered are five grandmasters, including three former U.S. chess champions, Arthur Bisguier, Larry Evans and Samuel Reshevsky. The others are Pal Benko and Robert Byrne.

Many of the strongest masters and experts are expected to come from all parts of the country, with an eye for the top money.

The less experienced players will have their own set of prizes, besides the major incentive of competing against the masters and getting a close look at their strategy and technique.

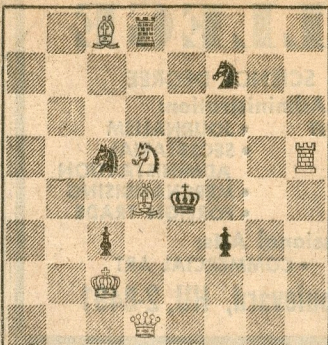
The winner will receive \$750 and the Stardust Trophy. Other championship prizes will be \$650, \$500, \$300, \$150, and \$100 each for the next five.

Prizes of \$200, \$150 and \$100 will be awarded for the highest scoring players rated as experts by the U.S. Chess Federation, with current ratings under 2200. The same amounts will be given to the leading Class A players, with ratings under 2000.

For those rated under 1800, the awards will be \$150, \$100 and \$50. The best under 1600 will receive \$100, \$75 and \$50. The winner in each class will be awarded a trophy as well.

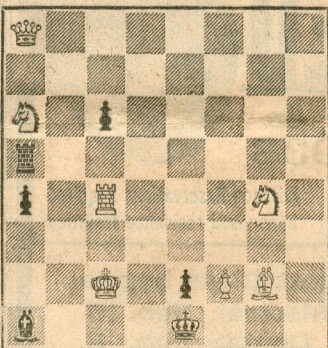
Jan. 17, 1965
TIMES PROBLEM 3659
By T. Tikkanen

BLACK 6



WHITE 6
TIMES PROBLEM 3660
By J. Mostert

BLACK 6



WHITE 7

Note how the keynote in 3659 changes the mates after RxN and P-B7. The long range mates are a striking feature of the three-mover.

SOLUTION TO PROBLEM 3653: N-K5
SOLUTION TO PROBLEM 3654: N-K4
If KxN, 2 N-B6ch; if R-B4, 2 Q-N7ch.

SOLVERS' LIST

Five points—E. Andres, G. Boehm, J. W. Brough, D. A. Daggett, T. Dana, G. E. Engebretsen, D. Kamnikar, I. Moskow, L. S. Peterson, J. W. Richardson, R. Roslin, R. S. Smith, C. E. Stern, I. J. E. Toeroek, J. Trolley. Four points—J. P. Klein.

Two points — C. Crail, V. W. Damm, S. Elliott, M. Fabian, Dr. J. A. Healy, J. Jessel, O. H. Ketchum, N. Lesser, M. Levy, A. Lusario, R. H. Margolin, D. F. Pittman, E. Scherzer, J. B. Silver, R. Stein, J. Stevens, J. Wood. One point—P. M. Blair Jr., D. Moriarty, Dr. A. Wodinsky, K. Wolf.

Special prizes will still go to the best performers over age 50 and to the highest woman player.

The entrance fee for those enrolling in advance is \$20. This should be sent before Jan. 31 to U.S. Chess Federation, 80 E. 11th St., New York, N.Y., 10003. Reservations for rooms should be made directly with the Stardust Hotel.

For those registering at the tournament site, the fee will be \$25. Additional members of the same family will pay only \$15, whether in advance or not.

Eight rounds will be played, using Swiss system pairings. The opening round will start at 10 a.m. Monday, Feb. 8. Another round will be at 4 p.m. the same day. Games will be scheduled mornings and afternoons on Tuesday and Wednesday as well.

One round Thursday afternoon and the final on Friday morning will complete the schedule. Any adjourned games will be played off during the evening. With that exception, evenings will be free for the many shows and other forms of enjoyment of Las Vegas.

A Fun Chess Tournament will take up the evening of Sunday, Feb. 7, for those who want all the chess they can get in. There will be lots of prizes, and no charge to play for entrants into the National Open.

The prize distribution will be at the Awards Breakfast, 9 a.m. Saturday, Feb. 13. Thus anyone with just one week off can make the tournament and be back home with time to spare.

Lt. Col. Edmund B. Edmondson, president of the U.S. Chess Federation, had the idea and carried on most of the negotiations required to make the tournament a reality. The Stardust has agreed to stage the event for the next two years as well.

SO. CAL. SPEED TOURNEY

The annual Southern California Speed Championship Tournament will start at 12:30 p.m. next Sunday at Joslyn Hall, Lincoln and Wilshire Blvds. in Santa Monica.

Play will be with clocks, with each player allowed five minutes for a game. Anyone can enter, with a fee of \$3. The director will be Herbert T. Abel, 4 Marine Terrace, Santa Monica. Write to him for further information.

CHESS ARCHIVES

The English edition of Chess Archives is starting its third year under the direction of former world champion Dr. Max Euwe of Amsterdam, Holland. It is issued monthly as a series of loose leaf pages, each devoted to a particular variation of an opening.

For 1965 a total of 150 pages will be published, of which 100 will cover the latest developments in opening theory. The rest will be recent games and feature articles.

Chess Archives is a constantly updated reference to the openings currently in use in

master chess. Each page has a general discussion of an opening variation, one or two diagrams and very detailed analysis.

The subscription rate for 1965 is \$6. Orders can be sent to the American representative, William J. Bult, 9662 Manor Ave., Allenpark, Mich., 48101.

ARMED FORCES TOURNEY

The annual tournament for the Thomas Emery Trophy, emblematic of the chess championship of the armed forces, was won by Air Force Lt. Donato Rivera Jr. of Chanute AFB, Ill.

Rivera scored 7½-1½ in the tournament in Washington, D.C. The same total was reached by Army Private Bruce Albertson of Ft. Lewis, Wash., but Rivera was ahead on tie-breaking points.

Third place went to Johan A. Hansen of Naval Air Station, Norfolk, Va., and fourth was Capt. Harold M. Weiner of Brooks AFB, Tex.

The final team scores were Air Force, 18½; Army, 17½, and the Sea Services, 15. The tournament was co-sponsored by the USO, the American Chess Foundation and the U.S. Chess Federation.

CHESS OLYMPICS, TEL AVIV

GRUENFELD DEFENSE

Reshevsky U.S.A.	Yanofsky Canada	Reshevsky U.S.A.	Yanofsky Canada
White	Black	White	Black
1-P-Q4	P-KN3	22-QxP	QR-N
2-P-QB4	N-KB3	23-RxN	RxQ
3-N-QB3	P-Q4	24-RxR	P-K3
4-N-B3	B-N2	25-R-Q	Q-B3
5-B-B4	O-O	26-B-B4	QxKNP
6-R-B	P-B3	27-R-Q6	R-K
7-P-K3	B-N5	28-R-N7	B-B
8-Q-N3	BxN	29-R-B6	P-KR4
9-PxB	Q-Q2	30-RxRP	P-R5
10-P-KR4	PxP	31-N-B	Q-B3
11-BxP	N-R4	32-R-R2	Q-Q5
12-B-R2	N-R3	33-P-N3	B-N5
13-N-K4	P-R3	34-N-K3	Q-B6
14-K-K2	P-QN4	35-RxP	Q-K8ch
15-B-Q3	K-R2	36-K-Q3	R-Qch
16-P-R4	P-KB4	37-B-Q5	RxBch
17-N-N3	N-B5ch	38-NxR	QxR
18-PxN	QxP	39-R-R8ch	K-R2
19-PxP	PxP	White lost by overstepping the time limit.	
20-P-R5	N-B4		
21-PxPch	K-R		

SICILIAN DEFENSE

Unzicker W. Germ'y	Gheorgiu Romania	Unzicker W. Germ'y	Gheorgiu Romania
White	Black	White	Black
1-P-K4	P-QB4	21-P-N3	R-B2
2-N-KB3	P-Q3	22-Q-Q2	BxP
3-P-Q4	PxP	23-NxP	B-QN1
4-NxP	N-KB3	24-B-R6	P-Q4
5-N-QB3	N-B3	25-N-Q3	Q-R6
6-B-KN5	B-Q2	26-BxB	KxB
7-Q-Q2	P-QR3	27-Q-B	Q-R2
8-O-O-O	P-N4	28-P-B5	B-R6
9-BxN	NPxB	29-Q-Q2	R-QR
10-K-N	P-K3	30-R-B4	P-Q5
11-NxN	BxN	31-Q-N2ch	K-N
12-B-Q3	Q-N3	32-P-B4	B-Q3
13-Q-K2	O-O-O	33-K-B2	BxR
14-P-QR4	P-N5	34-PxB	Q-R4
15-BxPch	K-N	35-N-N2	QxPch
16-N-R2	BxRP	36-R-Q3	R-R7
17-B-B4	R-N	37-Q-B3	P-K4
18-P-B4	R-B	38-Q-Q5	Q-Q2
19-KR-B	Q-B4	Resigns.	
20-P-QN3	B-B3		

GRUENFELD DEFENSE

Cruz Argentina	Spiridonov Bulgaria	Cruz Argentina	Spiridonov Bulgaria
White	Black	White	Black
1-P-Q4	N-KB3	19-P-B4	N-B4
2-P-QB4	P-KN3	20-N-Q4	B-N2
3-N-QB3	P-Q4	21-N-B5	B-B
4-PxP	NxP	22-BxB	RxB
5-P-K4	NxN	23-N-R6ch	K-N2
6-PxN	B-N2	24-P-B5	P-B3
7-B-QB4	O-O	25-N-N4	P-KN4
8-N-K2	N-B3	26-P-K5	N-Q2
9-B-K3	N-R4	27-P-Q6	PxQP
10-B-Q3	P-QB4	28-PxPch	K-R
11-O-O	Q-B2	29-Q-K7	R-KN
12-Q-Q2	R-Q	30-N-R6	QR-KB
13-QR-B	P-N3	31-P-B7	R-N2
14-B-KR6	B-R	32-P-B6	R-N3
15-Q-K3	B-Q2	33-BxR	PxB
16-K-R	B-R5	34-R-B3	P-Q4
17-P-Q5	P-B5	35-R-R3	Resigns
18-B-N	N-N2		