

# CHESS

BY ISAAC KASHDAN  
INTERNATIONAL GRANDMASTER

Address letters to Chess Editor, L.A. Times  
Los Angeles 53, Calif.

## CATS PLAY CHESS AT CITY TERRACE

The City Terrace Chess Club, 1126 N. Hazard St., completed its Summer Invitational Tournament, perhaps the most successful event in its history.

Eight sections of 10 men each competed in round-robin play, with the groups graded in accordance with players' ratings. To add color to the tournament, each section was given the name of a tribe of cats.

Whether the cats rank in the same order as the sections, we know not, but we list them as given by Tournament Director Gordon Barrett.

First naturally are the lions. Top performers after an unusually close struggle were Robert Harshbarger and Richard Laver, who tied for first place with 6-3. Harshbarger, who won six games and lost three, was rated ahead of Laver, who won five, lost two and drew two.

Tied for third at 5-4 were Steve Szirmay, Barrett and Daniel Amneus. Dr. S. Weinbaum had 4-5, and the remaining four all tied with 3½-5½. They were Neil Hultgren, Ben Kakimi, J. Earnest and Ralph Syvertsen.

Only 2½ points divided the winner from the bottom group. Another indication of the even division was the fact that one of Harshbarger's losses was to Syvertsen.

The second section was the tigers, who were topped by Richard Myhro with the fine score of 8-1. He lost only to Abe Tabash, who finished in second place with 6½-2½.

Tabash also lost only once, to Horace Hersey, but drew three games. Ed Barrios was third with 6-3. Keeseey and Touradj Saidi tied with 5½-3½, followed by Ron Pease, 4-5.

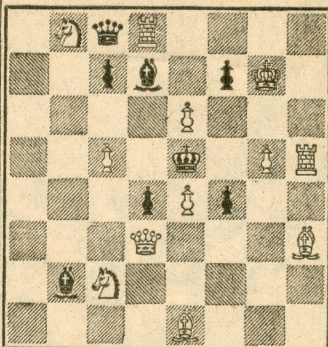
The leopards had a grand battle, winding up in a triple tie for first place among Allan Rich, Nathan Robinson and Bruce Samuelson. Each had

Oct. 18, 1964

TIMES PROBLEM 3633

By J. Xenakis

BLACK 8



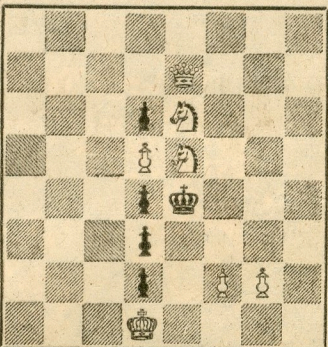
WHITE 12

White mates in two.

TIMES PROBLEM 3634

By P. Orlik

BLACK 5



WHITE 7

White mates in three.

The best variation in 3633, the mate by discovered check, is easily missed. Either knight can be spared in 3634, as White demonstrates prettily.

SOLUTION TO PROBLEM 3627: Q-QR2

SOLUTION TO PROBLEM 3628: B-R2

if KxB, 2 NxNch; if NxB, 2 N-N3ch; if NxN, 2 N-B2ch; if N-R5, 2 Q-KB7.

### SOLVERS' LIST

Five points—F. Aks, P. J. Burton, C. Crail, W. Darrow, G. E. Engebretsen, Dr. J. A. Healy, W. J. Heyneker, B. Jagielski, G. Leon-Martin, F. J. Munson, I. E. Nordstrom, R. Roslin, C. E. Stern.

Three points—M. Lucas, P. E. Rice. Two points—A. C. Engebretsen, J. D. Frierson, O. H. Ketchum, E. Knuth, G. McCollister, S. Schwarz, W. B. Tudor, C. Tuttle.

One point—R. Hagihara, L. S. Peterson.



identical scores of 7-2, with six wins, one loss and two draws.

Samuelson defeated each of his co-winners, but lost to Dr. R. Brow. Next in line was Stan Salter with 5-4. Dr. Brow tied at 4½-4½ with R. Eiden and Mike Carr.

The panthers were spread much further apart. The best score of the tournament was compiled by Steve Rains, who drew with C. Swett and won all his other games for a brilliant tally of 8½-½.

Swett was second with 6½-2½, but still had a good margin over J. Huffman, who finished in third place with 5-4. Next came W. King with 4½-4½, followed by a tie at 4-5 between Y. Oganessov and J. Porth.

The jaguars featured a tie for first, with Art Ash and H. D. Rader winning six games and losing two. Alone in third place was Irving Besen with 5½-2½. Al Hatch was fourth with 4½-3½, followed by C. Hoessly, R. Kotz and E. Willette, who tied with 4-4.

Norm Nicholson was the top ocelot with a score of 8-1. He was undefeated, winning seven games and drawing two. R. Co-han, who lost only to Nicholson, took second place with 7-2.

A. Baker was third with 6-3, closely pursued by R. Sloan, 5½-3½; S. Glassberg, 5-4, and R. McClenahan, 4½-4½.

The wildcats had a battle of the sexes to get the winning mark, with R. Pridonoff making it with 7½-1½. Doris Miller was a close second, tallying 7-2. S. Jang was third with 6-3. Tied at 5½-3½ were K. Chan and J. Bell.

In the lynx classification it was Roger Neustaedter who headed the pack with the solid score of 7½-½. It was a close margin, though, as D. Romm came second with 7-1. Other plus scores were R. Smith, 6-2, and R. Darling, 4½-3½.

### ROCKY MOUNTAIN OPEN

Californians practically dominated the Rocky Mountain Open Tournament in Phoenix, taking seven of the first nine places in the event.

The winner was Sidney Rubin of Los Angeles, who scored five wins and a draw to head the field of 71. He defeated Don Bengé of Burbank in the final round to clinch the prize.

Sam Priebe of Flagstaff, Ariz., was awarded second prize on tie-breaking points. He finished with 5-1, a score equalled by Paul Quillen of Santa Monica, Karl Stani of Los Angeles and Max Burkett of San Francisco.

Bengé dropped to a tie at 4½-1½ with Saul Wanetick of Los Angeles, Stephen Skrypzak of Redlands and A. M. Gardner of Phoenix.

### STEINER EXHIBITIONS

A number of new members were signed up by the Herman Steiner Chess Club, 8801 Cashio

St., as a result of a series of tournaments and exhibitions during the club's open house week.

Jack Moskowitz had 22 opponents in simultaneous play last Sunday afternoon. He won 18 of the games, lost to Club President Mrs. Gregor Piatigorsky and Robert Engler, and drew with Richard Bukey and Matthew Breindel.

The previous afternoon Irving Rivise and Carl Pilnick were the exhibitors, playing tandem against 14 players. They made alternate moves on every board without consultation, to such good effect that they won every game.

One of the games follows.

#### ENGLISH OPENING

| Rivise and Pilnick | Smith | Rivise and Pilnick | Smith   |
|--------------------|-------|--------------------|---------|
| White              | Black | White              | Black   |
| 1-P-QB4            | P-K4  | 14-P-QN4           | NxQP    |
| 2-N-QB3            | N-KB3 | 15-PxN             | BxQP    |
| 3-P-KN3            | P-Q4  | 16-R-K             | BxR     |
| 4-PxP              | NxP   | 17-QxR             | O-O     |
| 5-B-N2             | N-N3  | 18-N-B4            | KR-K    |
| 6-P-Q3             | N-B3  | 19-R-Q             | Q-N5    |
| 7-N-B3             | B-K2  | 20-BxN             | PxB     |
| 8-O-O              | B-K3  | 21-NxP             | QxQNP   |
| 9-P-QR4            | P-QR3 | 22-Q-B5            | QxN     |
| 10-P-R5            | N-Q2  | 23-QxBPch          | K-R     |
| 11-B-K3            | N-B4  | 24-N-N6ch          | PxN     |
| 12-N-Q2            | Q-Q2  | 25-B-Q4            | Resigns |
| 13-R-N             | B-B4  |                    |         |

#### INTERZONAL TOURNAMENT

##### QUEEN'S GAMBIT DECLINED

| Foguelman | Larsen  | Foguelman | Larsen  |
|-----------|---------|-----------|---------|
| Argentina | Denmark | Argentina | Denmark |
| White     | Black   | White     | Black   |
| 1-P-Q4    | P-Q4    | 22-K-R    | NxP     |
| 2-P-QB4   | P-K3    | 23-Q-Q    | Q-R4    |
| 3-N-KB3   | N-KB3   | 24-P-KR4  | R-Q     |
| 4-B-N5    | B-K2    | 25-Q-R4   | R-Q7    |
| 5-P-K3    | O-O     | 26-K-N2   | N-K4    |
| 6-N-B3    | P-KR3   | 27-R-KB4  | P-N4    |
| 7-B-R4    | P-QN3   | 28-PxP    | QxPch   |
| 8-PxP     | NxP     | 29-K-R    | Q-R4ch  |
| 9-BxB     | QxB     | 30-K-N2   | K-R     |
| 10-R-B    | NxN     | 31-B-R7   | KxB     |
| 11-RxN    | B-N2    | 32-Q-K4ch | Q-N3ch  |
| 12-B-Q3   | R-B     | 33-QxQch  | KxQ     |
| 13-O-O    | N-Q2    | 34-P-N4   | N-Q6    |
| 14-Q-R4   | P-QB4   | 35-R-N4ch | K-B3    |
| 15-KR-B   | P-R3    | 36-R-B    | RxRP    |
| 16-B-N    | P-QN4   | 37-R-Q4   | R-Nch   |
| 17-Q-B2   | P-N3    | 38-K-B3   | N-K4ch  |
| 18-PxP    | BxN     | 39-K-K4   | N-B3    |
| 19-PxB    | P-N5    | 40-R-B4   | P-KR4   |
| 20-R-B4   | N-K4    | Resigns   |         |
| 21-RxP    | Q-N4ch  |           |         |

#### ENGLISH OPENING

| Rossetto  | Porath | Rossetto  | Porath |
|-----------|--------|-----------|--------|
| Argentina | Israel | Argentina | Israel |
| White     | Black  | White     | Black  |
| 1-P-QB4   | N-KB3  | 20-PxNP   | QxNP   |
| 2-N-QB3   | P-B4   | 21-Q-K3   | RxP    |
| 3-P-KN3   | P-KN3  | 22-QxRP   | Q-Q2   |
| 4-B-N2    | B-N2   | 23-N-B4   | N-N5   |
| 5-P-K3    | N-B3   | 24-KN-K2  | B-R3   |
| 6-KN-K2   | P-Q3   | 25-Q-N6   | N-K6ch |
| 7-P-Q4    | PxP    | 26-K-R    | Q-R6   |
| 8-PxP     | B-B4   | 27-R-B2   | N-N5   |
| 9-O-O     | Q-Q2   | 28-R-N2   | B-K6   |
| 10-B-B4   | B-R6   | 29-QxP    | N-B7ch |
| 11-P-Q5   | N-K4   | 30-RxN    | BxR    |
| 12-BxN    | PxB    | 31-QxP    | Q-B4   |
| 13-N-B    | O-O    | 32-N-B4   | B-B4   |
| 14-N-Q3   | BxB    | 33-Q-R4   | P-K6   |
| 15-KxB    | P-K5   | 34-R-K    | R-N    |
| 16-N-B4   | QR-B   | 35-R-K2   | RxQN   |
| 17-Q-K2   | P-KN4  | 36-PxR    | Q-K5ch |
| 18-N-R3   | Q-B4   | Resigns   |        |
| 19-P-B3   | P-N5   |           |        |

#### BUENOS AIRES 1964

##### KING'S INDIAN DEFENSE

| Naidort | Byrne | Naidort  | Byrne |
|---------|-------|----------|-------|
| White   | Black | White    | Black |
| 1-P-Q4  | N-KB3 | 20-P-R3  | B-R4  |
| 2-P-QB4 | P-KN3 | 21-P-KN4 | B-N3  |
| 3-N-QB3 | B-N2  | 22-Q-N4  | R-B2  |
| 4-P-K4  | P-Q3  | 23-O-O-O | R-Q2  |
| 5-N-B3  | O-O   | 24-K-N   | R-B   |
| 6-B-K2  | P-K4  | 25-K-R   | K-R2  |
| 7-P-Q5  | QN-Q2 | 26-Q-N3  | P-R3  |
| 8-B-N5  | P-KR3 | 27-Q-K3  | P-N4  |
| 9-B-R4  | P-KN4 | 28-PxP   | P-Q4  |
| 10-B-N3 | N-R4  | 29-PxRP  | PxP   |
| 11-N-Q2 | N-B5  | 30-B-N5  | R-Q4  |
| 12-B-B  | N-B4  | 31-B-K2  | NxB   |
| 13-Q-B2 | P-B4  | 32-QxN   | R-B7  |
| 14-P-B3 | P-B3  | 33-P-R7  | R-Q6  |
| 15-B-B2 | PxKP  | 34-Q-K   | RxB   |
| 16-PxKP | PxP   | 35-N-N3  | Q-K2  |
| 17-BxN  | P-Q5  | 36-N-R5  | Q-K3  |
| 18-B-R3 | PxN   | Resigns  |       |
| 19-QxP  | B-N5  |          |       |