

CHESS

BY ISAAC KASHDAN
INTERNATIONAL GRANDMASTER
Address letters to Chess Editor, L.A. Times
Los Angeles 53, Calif.

PLAYOFF HERE FOR INTERZONAL PLACE

An interesting series of match games will be played here next month in order to resolve a tie among William Addison, Larry Evans and Samuel Reshevsky in the recently completed U.S. Championship Tournament.

One of the three will be entitled to a place in the Interzonal Tournament, in which winners of various zonal events will compete as a step towards the world championship title. Bobby Fischer and Arthur Bisguier have already qualified for the interzonal.

A double round-robin for a total of six games has been arranged at the Herman Steiner Chess Club, 8801 Cashio St. California champion Addison will have his share of rooters in the strife against former U.S. titleholders Evans and Reshevsky, both of New York.

Following is the schedule:

Friday, Feb. 8 — Addison vs. Evans.

Sunday, Feb. 10—Evans vs. Reshevsky.

Tuesday, Feb. 12—Reshevsky vs. Addison.

Tuesday, Feb. 19—Addison vs. Reshevsky.

Friday, Feb. 22—Evans vs. Addison.

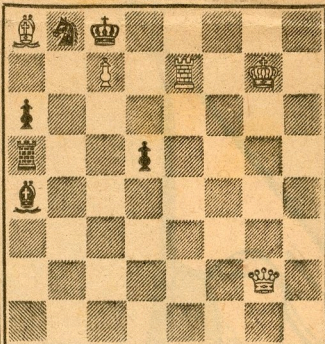
Sunday, Feb. 24—Reshevsky vs. Evans.

Jan. 20, 1963

TIMES PROBLEM 3451

By V. V. Novikov

BLACK 6



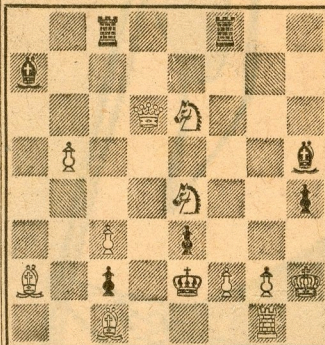
WHITE 5

White mates in two

TIMES PROBLEM 3452

By L. Loshinski

BLACK 8



WHITE 11

White mates in three.

Sunday sessions will be from 1 to 6 p.m. and if necessary from 8 to 10 p.m. Play on other days will be from 6:30 to 11:30 p.m. The charge for spectators will be \$1 for each game.

KEY GAMES FOR FISCHER

When it was all over it seemed like a fairly easy victory for Bobby Fischer in his fifth straight success in the U.S. Chess Championship Tournament. There were three key games that marked the transition points.

At the outset Fischer lost to Edmar Mednis, going wrong when he offered a pawn in the endgame. Mednis held on to the material and scored by clever tactics.

Fischer recovered by a series of victories starting with an important point against Samuel Reshevsky. Fischer had a slight edge early and found opportunities in the rook ending.

In the final round game Fischer and Bisguier met with even scores for the vital decision. The critical moment came on Bisguier's 23rd turn, when he missed a sharp maneuver allowing Fischer to advance his knight to a commanding post. That was all the champion needed.

The games follow:

FRENCH DEFENSE

Fischer White	Mednis Black	Fischer White	Mednis Black
1-P-K4	P-K3	37-R-R	B-K
2-P-Q4	P-Q4	38-K-B3	N-K5
3-N-QB3	B-N5	39-K-K3	N-B3
4-P-K5	P-QB4	40-P-B3	B-Q2
5-P-QR3	BxNch	41-P-N4	B-K
6-PxB	Q-B2	42-K-B4	B-N4
7-N-B3	B-Q2	43-P-R5	PxRP
8-P-QR4	N-K2	44-QR-K	B-K
9-B-Q3	QN-B3	45-K-K3	P-N3
10-O-O	P-B5	46-RPxP	RxP
11-B-K2	P-B3	47-R-R	R-N2
12-B-R3	O-O	48-B-Q6	R-R2
13-R-K	R-B2	49-PxBP	PxP
14-PxP	PxP	50-R-KR4	K-K3
15-B-KB	R-K	51-B-R2	R-N7
16-N-R4	N-N3	52-K-Q2	KR-QN2
17-Q-R5	R-N2	53-K-B	R(7)-N3
18-P-N3	Q-R4	54-B-B	N-N
19-B-QN2	N-Q	55-B-B4	P-R4
20-R-K3	N-B2	56-R-KR2	P-QR5
21-K-R	N-Q3	57-B-R3	N-K2
22-NxN	PxN	58-B-N5	K-B2
23-Q-K2	R-R2	59-R-K2	R-K3
24-K-N	K-B2	60-RxR	KxR
25-P-R4	P-B4	61-K-Q	N-B
26-Q-B3	N-K5	62-K-Q2	B-Q2
27-Q-B4	R-QB	63-B-N2	R-R2
28-B-N2	Q-B2	64-R-Kch	K-Q3
29-QxQ	RxQ	65-B-R6	P-R6
30-P-QR5	R-B3	66-B-B8ch	K-B3
31-B-QR3	R-QR3	67-B-B5	R-R
32-B-N4	R-R	68-R-QR	P-R7
33-R(3)-K	B-B3	69-K-K3	N-Q3
34-B-B3	N-Q7	70-K-B4	N-N4
35-B-K2	N-K5	71-B-N4	P-R5
36-K-N2	N-B3	72-B-KR3	N-B2
		Resigns	

SICILIAN DEFENSE

Fischer White	Reshevsky Black	Fischer White	Reshevsky Black
1-P-K4	P-QB4	28-R-KR3	B-B
2-N-KB3	P-Q3	29-R(1)-R	R-B2
3-P-Q4	PxP	30-R-R4	P-Q4
4-NxP	N-KB3	31-R-R	R-B3
5-N-QB3	P-QR3	32-PxPch	KxP
6-P-KR3	P-KN3	33-R-Qch	K-K3
7-P-KN4	B-N2	34-R-Q8	K-B4
8-P-N5	N-R4	35-R-R8	R-K3
9-B-K2	P-K4	36-R-R3	B-N2
10-N-N3	N-B5	37-RxR	BxR
11-N-Q5	NxN	38-RxP	R-K
12-QxN	N-B3	39-R-B7ch	K-N5
13-B-N4	BxB	40-P-B3ch	K-N6
14-PxB	Q-B	41-K-Q3	P-K5ch
15-Q-Q	N-Q5	42-PxP	R-Qch
16-P-QB3	NxN	43-B-Q4	K-N5
17-PxN	Q-K3	44-R-B	B-K4
18-R-QR5	P-B3	45-K-K3	B-B2
19-Q-Q5	QxQ	46-R-Nch	K-R4
20-RxQ	K-Q2	47-K-B3	R-Q2
21-PxP	BxP	48-P-K5	R-B2ch
22-P-N5	B-K2	49-K-K4	R-B4
23-K-K2	QR-KB	50-P-K6	B-Q
24-B-K3	R-QB	51-B-B6	BxB
25-P-N4	P-N4	52-PxB	RxP
26-R(5)-Q	K-K3	53-K-Q5	R-B7
27-R-R	R-B3	54-R-K	Resigns

RUY LOPEZ

Fischer White	Bisguier Black	Fischer White	Bisguier Black
1-P-K4	P-K4	20-N-R4	P-KR4
2-N-KB3	N-QB3	21-P-KR3	PxP
3-B-N5	N-B3	22-PxP	P-N3
4-O-O	NxP	23-R-R	B-Q
5-P-Q4	N-Q3	24-N-B5	RxR
6-BxN	QPxB	25-N-Q6ch	K-B
7-PxP	N-B4	26-RxR	P-QN4
8-QxQch	KxQ	27-P-KB4	K-N
9-N-B3	K-K	28-P-B5	N-B
10-N-K2	B-K3	29-P-K6	P-B3
11-N-B4	B-Q4	30-N-B7	B-K2
12-NxB	PxN	31-B-B4	P-N4
13-P-KN4	N-K2	32-B-Q6	R-K
14-B-B4	P-QB3	33-BxB	RxB
15-KR-K	N-N3	34-N-Q8	R-K
16-B-N3	B-B4	35-NxP	NxP
17-P-B3	N-B	36-PxN	RxP
18-P-N4	B-N3	37-NXP	Resigns
19-K-N2	N-K3		

MASTERS TO EXHIBIT

Anyone wishing to meet the masters in simultaneous play will have an unusual number of opportunities in the next week or two.

This afternoon Samuel Reshevsky, former U.S. chess champion, will take on a group at the Herman Steiner Chess Club, 8801 Cashio St. The charge will be \$3 for players and 50 cents for spectators.

Wednesday evening Reshevsky will have a similar exhibition at the City Terrace Chess Club, 1126 N Hazard St. The charges will be the same as above.

Three interferences of the bishop is the maximum with the limited force in 3451. The three-mover has a remarkable series of double interferences plus other good play.

SOLUTION TO PROBLEM 3445: Q-B1 SOLUTION TO PROBLEM 3446: K-B5
Threat, 2 NxPch; if N-Q6ch, 2 KxQPch; if N-K3ch or RxB, 2 K-Q6ch; if R-B3ch, 2 KxR; if B-N7, 2 KxPch, if PxKN, 2 QxBP; if N-Q4, 2 KxN.

SOLVERS' LIST

Five points—E. T. Dana, J. Di Fulvio, P. Lippman, F. J. Munson, C. E. Stern, R. M. Stuarts.

Three points—I. E. Nordstrom.

Two points—F. Aks, J. H. Atherton, P. J. Burton, G. R. Cooke, R. Garcia M. Geller, Dr. J. A. Healy, M. Hirsh, F. B. Jones, O. H. Ketchum, W. J. Lands, Mrs. T. T. Lanzi, N. Lesser, M. Mille, G. F. Oglesby, M. Rosen, R. Roslin, M. Roth, J. D. Santacroce, S. Schwarz, W. Sherwood, D. L. Stratton, C. T. Tongko.

One point—J. Foley, J. T. Haag, J. Haliburton, R. E. Thompson.

George Koltanowski of San Francisco will display his prowess at both blindfold and simultaneous chess Monday evening.

Jan. 28 at Plummer Park, 7737 Santa Monica Blvd. The program will start at 7 p.m. with a rapid blindfold game and a lecture on this specialty. Over-the-board play against about 30 opponents will follow. The charge will be \$2.50 for players and \$1 for spectators.

Another former U.S. champion, Larry Evans, will play against all comers starting at 2 p.m. Sunday, Jan. 27, at the Santa Monica Bay Chess Club, Joslyn Hall, Wilshire and Lincoln Blvds.

At 10 a.m. the same day the Santa Monica club is running the annual Los Angeles County rapid transit championship, with games limited to five minutes for each player.

Your editor is also getting into the act, with a lecture and exhibition on Jan. 28 at Fort MacArthur. This will be limited to personnel in the armed forces.

RAPID TRANSIT PLAY

J. Lazos and L. Kupersmith, scoring 9-1, tied for first in the regular Tuesday evening rapid transit tournament at the Herman Steiner Chess Club. F. Turim took third prize with 8½-1½.

The annual rapid transit tournament of the Prudential Chess Club, in which 16 participated, was won by John Cromie with a score of 7½-½. Bob Fineberg was second with 6-2. Carol Bohaty won the junior trophy with a tally of 4½-3½.

CHESS OLYMPICS, VARNA

QUEEN'S INDIAN DEFENSE

Tal USSR	Hecht Germany	Tal USSR	Hecht Germany
White	Black	White	Black
1-P-Q4	N-KB3	26-BxB	N-B4
2-P-Q-B4	P-K3	27-QR-N	P-B3
3-N-KB3	P-QN3	28-KR-Qch	K-K2
4-N-B3	B-N5	29-R-Kch	K-Q3
5-B-N5	B-N2	30-K-B2	P-B5
6-P-K3	P-KR3	31-P-N4	N-K2
7-B-R4	BxNch	32-R-N7	QR-KN
8-PxB	P-Q3	33-BxP	N-Q4
9-N-Q2	P-K4	34-BxN	PxB
10-P-B3	Q-K2	35-R-N4	R-Q8
11-P-K4	QN-Q2	36-RxP	RxBP
12-B-Q3	N-B	37-R-R6ch	K-B4
13-P-B5	QPxB	38-RxBP	P-KR4
14-PxKP	QxP	39-P-KR3	PxP
15-Q-R4ch	P-B3	40-RPxP	R-R2
16-O-O	N-N3	41-P-N5	R-R4
17-N-B4	Q-K3	42-R-B5	R-B7ch
18-P-K5	P-N4	43-K-N3	K-B5
19-PxN	PxQ	44-R(1)-K5	Q-Q5
20-PxP	R-KN	45-P-N6	R-R8
21-B-B5	NxB	46-R-B5ch	K-Q6
22-BxQ	B-R3	47-RxR	RxR
23-N-Q6ch	K-K2	48-K-B4	K-KN8
24-B-B4	RxP	49-R-KN5	Resigns
25-P-N3	KxN		

KING'S INDIAN DEFENSE

Brinck-Claussen Denmark	Littlewood England	Brinck-Claussen Denmark	Littlewood England
White	Black	White	Black
1-P-Q4	N-KB3	14-B-Q3	RxRch
2-P-QB4	P-KN3	15-RxR	N-Q2
3-N-QB3	B-N2	16-N-KN5	N-B3
4-P-K4	O-O	17-P-B5	BxP
5-P-B4	Q-Q3	18-BxB	PxB
6-N-B3	P-B4	19-Q-B4	Q-Q2
7-P-Q5	P-K3	20-N-N5	R-K
8-B-K2	PxP	21-R-KB	N-N5
9-KPxP	R-K	22-NxQP	QxN1
10-O-O	N-N5	23-QxQ	B-Q5ch
11-R-K	N-K6	24-K-R	N-B7ch
12-BxN	RxB	25-K-N	N-K5ch
13-Q-Q2	R-K	Resigns	