

AMATEUR TOURNEY AT SANTA MONICA

In most major chess tournaments, it is the masters and leading experts who dominate the proceedings. An outstanding exception is the Southern California Amateur Championship, starting next Saturday afternoon at Joslyn Hall, Wilshire and Lincoln Blvds. in Santa Monica.

Entries in this event are limited to those who are rated under 2,000 by the U.S. Chess Federation, or unrated players. The latter will be considered by the registration committee. Anyone determined to be too strong for the group will be eliminated.

The prizes, equaling the highest ever offered for a tournament of this nature, will be \$300 and a trophy for the winner, \$150 for second place and \$75 for third. The entrance fee is \$10.

Eight rounds will be played using Swiss system pairings, with two rounds each day Oct. 26 and 27 and Nov. 2 and 3. Sessions will commence at 12:30 p.m. and 6 p.m. Chess clocks will be used, with a time limit of 50 moves in two hours.

The tournament director will be Herbert T. Abel, 4 Marine Terrace, Apt. D, Santa Monica. Write to him for advance registration. Entries close at noon Saturday.

The tournament is sponsored by the Santa Monica Bay Chess Club, which meets at Joslyn Hall, and by the Herman Steiner Chess Club, 8801 Cashio St.

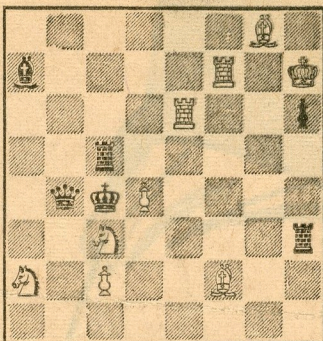
GOSTA STOLTZ DIES

Gosta Stoltz, undoubtedly the greatest Swedish player of his time, died recently in Stockholm at the age of 59. He had been ill and inactive in chess for a number of years.

In the early 1930s Stoltz was noted as a brilliant tactician, always on the alert for daring combinations. In addition he was an excellent analyst and teacher.

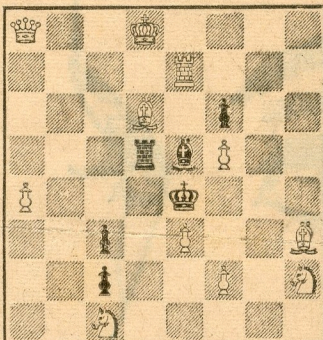
Following are examples of his attacking style:

Oct. 20, 1963
 TIMES PROBLEM 3529
 By J. Sugyl
 BLACK 6



WHITE 9
 A—White mates in two.
 B—Move black rook from KR6 to KR7, and white mates in two.

TIMES PROBLEM 3530
 By C. J. R. Sammelius
 BLACK 6



WHITE 11
 White mates in three.
 There are two distinct problems in 3529, as noted above. The duel between the rooks is the clever feature. Two points will be allowed for each correct answer.

The bishops are the star performers in 3530. Note the stalemate in the initial position.

SOLUTION TO PROBLEM 3523: N-N5
 SOLUTION TO PROBLEM 3524: B-B8
 If KxN, 2 B-R6ch; if PxPch, 2 QxP; if P-K3, 2 R-K1.

SOLVERS' LIST

Five points—M. Chutorian, C. Foster, W. H. Griffith, C. J. Kavanagh, G. Leon-Martin, J. R. Martinez, F. J. Munson, L. J. Stevens.

Two points—J. E. Gersch, J. T. Haag, Dr. J. A. Healy, O. H. Ketchum, M. F. Kohler, N. Lesser, M. Roth, O. H. Strehlow, K. Williamson.

One point—G. F. Oglesby, G. G. Scott.

QUEEN'S GAMBIT DECLINED

Stoltz	Tartakower	Stoltz	Tartakower
White	Black	White	Black
1-P-Q4	P-Q4	25-Q-B3	Q-B
2-P-QB4	P-K3	26-RxP	B-B2
3-N-KB3	N-KB3	27-RxR	RxR
4-B-N5	B-K2	28-K-N2	Q-B4
5-QN-Q2	QN-Q2	29-B-R2	P-QN4
6-P-K3	O-O	30-P-QN4	Q-Q5
7-B-Q3	P-B4	31-N-K3	Q-B6
8-O-O	P-QN3	32-R-K2	QxRP
9-Q-B2	P-KR3	33-Q-R8ch	K-R2
10-B-R4	B-N2	34-N-Q5	NxN
11-QR-Q	BPxP	35-BxN	Q-Q6
12-KPxP	PxP	36-B-B3	B-Q
13-NxP	BxN	37-R-K8	Q-Q5
14-PxB	N-R4	38-B-K4	Q-B3
15-B-N3	NxB	39-R-K6!	Q-Q5
16-RPxN	N-B3	40-Q-B6	B-N3
17-Q-K2	R-B	41-R-K8	QxPch
18-P-B4	R-B2	42-K-R3	Q-B8ch
19-B-N	B-Q3	43-K-R4	B-Qch
20-P-R3	Q-K2	44-P-B6ch	P-N3
21-KR-K	R-Q	45-BxPch!	KxB
22-N-K3	QR-Q2	46-R-N8ch	K-R2
23-P-B5	P-K4	47-Q-K4ch!	KxR
24-N-B4	PxP	48-Q-N4ch	Resigns

FRENCH DEFENSE

Spielmann	Stoltz	Spielmann	Stoltz
White	Black	White	Black
1-P-K4	P-K3	16-BxQ	B-N5
2-P-Q4	P-Q4	17-P-KN3	B-R6ch
3-N-Q2	N-KB3	18-K-N	KxN
4-P-K5	KN-Q2	19-B-B7	KR-K
5-B-Q3	P-QB4	20-B-K5	NxB
6-P-QB3	N-QB3	21-PxN	RxP
7-N-K2	Q-N3	22-Q-N3	B-QB4
8-N-B3	PxP	23-B-B5	BxB
9-PxP	B-N5ch	24-QxPch	K-N3
10-K-B	P-B3	25-QxR	R-K7
11-N-B4	PxP	26-P-KR4	BxPch
12-NxP(6)	P-K5	27-K-B	B-Q6
13-B-KB4	PxN	28-P-R5ch	K-N4
14-B-B 7	N-B3	Resigns	
15-NxPch	K-B2		

HASSLE IN BASEL

Under this heading we received a report from Jerry Spann of Oklahoma City, vice president of the International Chess Federation, who attended the world congress of the federation held last month in Basel, Switzerland.

Actually much was accomplished. We have no space for a full summary of all the issues discussed, but will quote some of the items of general interest.

The next Chess Olympics will take place in Tel Aviv, Israel, from Nov. 2 to 24, 1964. Every effort will be made to send a team from the United States. Your editor, who was captain of our team in Leipzig, 1960, may again take that position.

The 1964 Interzonal Tournament will be held in Holland. This was originally awarded to France, but financial and other problems proved too difficult. August is the most likely time.

The World Students Championship will be held in Krakow, Poland in July, 1964. The World Junior Championship is still open.

A vote of commendation was given to the Piatigorsky Foundation for the establishment of the biennial Piatigorsky Cup Grandmaster Tournament. This was placed on the calendar as an official event of the International Chess Federation.

The question of the use of seconds in master tournaments, particularly in analysis of adjourned games, was again discussed. It was decided to prepare a questionnaire to be sent to all grandmasters, international masters and international referees.

An experiment will be made in several tournaments, including the 1964 Interzonal, to avoid overnight adjournments. Two sessions will be played daily,

first five hours and then two hours. The interval should be not more than 1½ hours.

Premature Draws

Almost half of Spann's report is on the problem of premature draws, where players agree to draw in a few moves with no real attempt to engage in combat.

In 1962 the federation approved the following rule: "An agreement to draw may not be made before the 30th move unless on account of quite exceptional circumstances the referee of the competition confirms it. Infringement of this stipulation entails loss of the game for both players."

The intent of this rule has not been followed in a single tournament of world status. Either the rule is abrogated by agreement of all concerned, as happened at the Piatigorsky Cup Tournament, or the director allows all draws agreed without worrying about "exceptional circumstances."

It is our opinion, based on considerable experience both as player and director, that this is not a matter for legislation. Players must be permitted to use their own judgment as to how much risk they shall take, provided they act in their own interest, and not to help any one else.

In the Piatigorsky Cup Tournament, in the absence of the above rule, there was only one case of the so-called "grandmaster draw." Directors have considerable personal influence in this area.

At the conclusion of the discussion at Basel it was decided that the rule was to continue in force. A committee was formed to make further recommendations next year. Chairman of the committee is Van Steenis of Holland, with grandmaster Gligoric of Yugoslavia and international referee Fohl of West Germany as the other members.

RUSSIAN CHAMPIONSHIP

Aronin	Stein	White	Black
White	Black	Aronin	Stein
1-P-K4	P-K4	22-B-K7	Q-K3
2-N-KB3	N-QB3	23-BxR	RxB
3-B-N5	N-B3	24-N-B3	Q-B2
4-O-O	B-B4	25-P-KR4	B-Q
5-P-B3	O-O	26-N-K5	Q-K
6-P-Q4	B-N3	27-Q-R4	P-R4
7-PxP	KNxP	28-N-B3	Q-B2
8-Q-Q5	N-B4	29-Q-KB4	K-N
9-B-N5	N-K2	30-N-N5	Q-R4
10-Q	N-K5	31-R-K3	BxN
11-B-KR4	P-Q4	32-PxB	Q-B2
12-QN-Q2	P-QB3	33-Q-Q6	P-B5
13-B-Q3	B-KB4	34-P-N6	Q-B3
14-Q-B2	NxN	35-R-K6	Q-B4
15-BxB	NxR	36-P-B3	P-R5
16-BxPch	K-R	37-P-R3	Q-N4
17-RxN	Q-Q2	38-R-K5	Q-B3
18-P-K6	PxP	39-R-K6	Q-B4
19-N-K5	Q-Q3	40-Q-K7	R-N
20-R-K	N-B4	41-R-Q6	R-KB
21-BxN	PxB	42-R-Q8	Resigns

SICILIAN DEFENSE

Shiyanovsky	Korelov	Shiyanovsky	Korelov
White	Black	White	Black
1-P-K4	P-QB4	16-B-Q3	PxN
2-N-KB3	P-K3	17-BxN	PxB
3-P-Q4	PxP	18-QxKP	R-R5
4-NxP	N-KB3	19-Q-K2	Q-QB4
5-N-QB3	B-N5	20-B-N2	N-N5
6-P-K5	N-K5	21-Q-Q2ch	N-Q4
7-Q-N4	Q-R4	22-R-QB	R-B5
8-QxNP	BxNch	23-P-KR4	K-K
9-PxB	QxPch	24-P-R5	N-K6ch
10-K-K2	N-QB3	25-K-K2	N-B4
11-N-N5	QxPch	26-KR-Q	K-B
12-K-K	P-Q4	27-Q-Q8ch	K-N2
13-QxRch	K-Q2	28-Q-B6ch	K-R2
14-QxP	QxPch	29-QxPch	Resigns
15-K-Q	P-R3		