

CHESS

BY ISAAC KASHDAN
INTERNATIONAL GRANDMASTER
Address letters to Chess Editor, I.A. Times
Los Angeles 53, Calif.

FISCHER, TAL RIVALS IN CURACAO TOURNEY

The Candidates' Tournament to determine a challenger for the world chess championship will get under way Wednesday, May 2, at the Hotel Intercontinental in Curacao, Netherlands Antilles.

American hopes will rest mainly with Bobby Fischer, brilliant 19-year-old grandmaster from Brooklyn, making his first appearance since his overwhelming victory in the Stockholm Interzonal Tournament.

Fischer's chief opponent, and favorite to win the tournament, is Mikhail Tal of Latvia, who won the world championship in a match with Mikhail Botvinnik of Moscow in 1960, then lost a return match last year.

In the previous candidates' tournament in Yugoslavia in 1959 Tal took first place with a score of 20-8, while Fischer tied for fifth with 12½-15½. In their individual encounters Tal scored 4-0.

But only the foolhardy or prejudiced would predict anything remotely similar this time. Fischer's improvement in the last three years has been dramatic. In their most recent joint tournament, in Bled, Yugoslavia, last year, Fischer defeated Tal in a beautiful game.

The second American representative in Curacao will be Pal Benko of New York, who qualified through a playoff match after tying for sixth place in Stockholm.

The majority of the eight players will be from the Soviet Union. In addition to Tal they will have Paul Keres, Efim Geller, Tigran Petrosian and Victor Korchnoi. The final qualifier is Dr. Miroslav Filip of Czechoslovakia.

The tournament will be a quadruple round-robin for a total of 28 rounds. Played at an average rate of four games a week, it will go on until June 28, when the last adjourned game is scheduled to be completed and the closing banquet will be held.

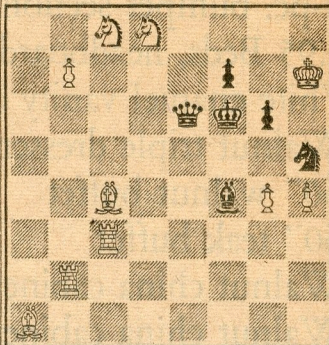
NORTH-SOUTH MATCH

The highlight of the year in California chess is the annual North-South match, scheduled at the Hotel Californian in Fresno on Sunday, June 3. Hundreds of players and spectators are expected to make the trip.

APRIL 22, 1962

TIMES PROBLEM 3373

By H. Knuppert and L. Larsen
BLACK 6

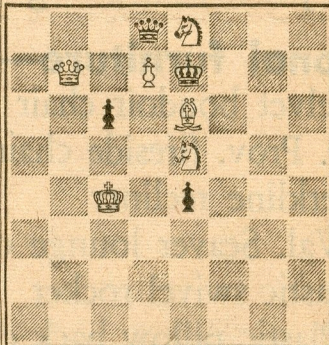


WHITE 10

A—White mates in two.
B—Move white bishop from Q4 to QN3, and White mates in two.
C—Move same bishop to QB2, and White mates in two.

TIMES PROBLEM 3374

By M. Havel
BLACK 4



WHITE 6

White mates in three.

No. 3373 is three problems in one. A slight change in position means a distinct solution in each case. Two points will be allowed for each correct answer.

There are a couple of odd mating positions in 3374. This was one of the last compositions of the great Bohemian composer.

SOLUTION TO PROBLEM 3367: Q-R3

SOLUTION TO PROBLEM 3368: B-R5
Threat, 2 R×Pch; if P-QN8(N), 2 B-K3; if P-KN8(N), 2 B-QN6; if R-N5 or K5, 2 B-B7.

SOLVERS' LIST

Five points—F. Aks, P. J. Burton, J. DiFulvio, P. C. Jordan, J. Kaufman, I. E. Nordstrom, R. Roslin, D. Rothman, O. Wiseman.

Two points—K. C. Cummings, C. Greifinger, Dr. J. A. Healy, E. P. Kely, N. Lesser, J. R. Martinez, G. F. Oglesby, C. T. Tongko.

One point — E. G. Douglas, J. Kent, C. Mosby, C. T. Patterson, M. Rosen, S. Schwarz, V. D. Vishanoff.

sources indicate that the East German team could not obtain clearance for the trip to England.

The American team, which had been making plans to attend, would probably have been William Lombardy, Raymond Weinstein, Charles Kalme, Edmar Mednis and Anthony Saidy.

In this match masters, experts and casual players are all welcome. The lineup of the two teams is arranged according to strength, with every game counting equally toward the team tally.

The South has lost the last four matches in succession, though Los Angeles alone has enough qualified players to turn the tide if they could be gotten into action.

Nathan Robinson of 3618 Carmona, L.A. 16, will be the captain of the South contingent, and he is head of a committee which will arrange for reservations and transportation to Fresno. Anyone interested should write to him or call him at AX. 1-0270.

Anyone residing south of Fresno is eligible for the South team. The only requirement is membership in the California State Chess Federation, sponsors of the match. The dues are \$2.50 per year, which includes a subscription to Chess Reporter, official publication of the CSCF.

The annual meeting of the CSCF will take place at the same site Saturday evening, June 2, with your editor presiding. Plans for increasing and broadening chess activity will be developed.

Another event of interest at Fresno will be the California State rapid transit championship tournament, which will start some time Saturday afternoon. This is open to all, at a nominal fee.

PLUMMER PARK CLUB

A new chess club has been organized at Plummer County Park, 7377 Santa Monica Blvd. in West Hollywood. Regular meetings are held Monday evenings from 7 to 10 p.m. In addition members gather for informal play every afternoon.

The club is sponsored by the County Parks and Recreation Dept. Players may join at any meeting, with an initiation fee of \$1. Free instruction is offered for beginners.

STUDENT TOURNEY OFF

Once again an international tournament has run aground on the shoals of cold war politics. The annual World Student Team Championship, organized by the British Chess Federation, has been cancelled owing to failure to secure visas for all participants.

The official report from President Folke Rogard of the International Chess Federation does not give details, but other

MANHATTAN CHESS TOURNEY

Probably the strongest chess club in the United States is the Manhattan Chess Club in New York City. Many of our leading players enter, as well as numerous lesser lights hoping to battle with the masters.

The tournament lasts seven or eight months, including preliminary and final rounds. This year there are 46 participants in the finals, with 14 in the master section and the others in candidate, expert and amateur sections.

Following are games from the tournament.

KING'S INDIAN DEFENSE

| Denker | Siegel | Denker | Siegel |
|----------|--------|---------|---------|
| White | Black | White | Black |
| 1-N-KB3 | N-KB3 | 18-P-K4 | B-N6 |
| 2-P-KN3 | P-KN3 | 19-Q-K3 | Q-R5 |
| 3-B-N2 | B-N2 | 20-N-K | R-B5 |
| 4-P-B4 | O-O | 21-P-K5 | R-B |
| 5-N-B3 | P-Q4 | 22-B-K4 | P-K3 |
| 6-PxP | NxP | 23-N-B3 | B-B7 |
| 7-P-Q4 | P-QB4 | 24-RxN | BxB |
| 8-O-O | NxN | 25-QxB | Q-N6 |
| 9-PxN | N-B3 | 26-Q-N7 | R-B |
| 10-P-K3 | Q-R4 | 27-R-R | QxB |
| 11-B-N2 | PxP | 28-R-Q | QxRP |
| 12-BPxP | B-K3 | 29-K-N2 | R-K |
| 13-Q-K2 | QR-B | 30-P-Q5 | Q-R5 |
| 14-KR-B | P-N3 | 31-PxP | PxP |
| 15-P-KR3 | N-N5 | 32-R-Q7 | B-R |
| 16-P-R3 | N-R7 | 33-RxP | R-KB |
| 17-RxR | RxR | 34-R-R4 | Resigns |

KING'S INDIAN DEFENSE

| Ephron | Preisinger | Ephron | Preisinger |
|------------|------------|-----------|------------|
| White | Black | White | Black |
| 1-N-KB3 | N-KB3 | 24-QR-Q | B-K3 |
| 2-P-Q4 | P-KN3 | 25-R-Q6 | P-R3 |
| 3-P-KN3 | B-N2 | 26-KR-Q | KR-Q |
| 4-B-N2 | O-O | 27-P-N4 | Q-B3 |
| 5-O-O | P-Q3 | 28-B-K3 | RxR |
| 6-P-B4 | P-B4 | 29-RxR | Q-N7 |
| 7-P-K3 | N-B3 | 30-Q-Q | QxRP |
| 8-R-K | B-Q2 | 31-RxB! | PxR |
| 9-N-B3 | P-QR3 | 32-Q-Q7 | Q-R8ch |
| 10-P-QR3 | R-B | 33-K-R2 | B-K4ch |
| 11-PxP | PxP | 34-NxB | QxNch |
| 12-Q-B2 | Q-B2 | 35-P-B4 | Q-B2 |
| 13-R-N | N-QR4 | 36-QxPch | K-R2 |
| 14-P-N3 | P-QN4 | 37-P-K5 | NxNP |
| 15-N-Q5 | NxN | 38-B-K4 | R-KN |
| 16-PxN | P-K4 | 39-P-B5 | N-Q6 |
| 17-PxPe.p. | BxP | 40-PxPch | K-R |
| 18-P-K4 | KR-K | 41-Q-B6ch | Q-N2 |
| 19-B-B4 | Q-N2 | 42-BxP | QxQ |
| 20-N-N5 | B-K5 | 43-PxQ | N-B4 |
| 21-P-R3 | B-Q2 | 44-P-N7ch | RxP |
| 22-N-B3 | P-B5 | 45-PxRch | Resigns |
| 23-P-QN4 | N-B3 | | |

INTERZONAL TOURNAMENT

QUEEN'S GAMBIT

| Petrosian | Bertok | Petrosian | Bertok |
|-----------|--------|--------------|---------|
| White | Black | White | Black |
| 1-P-Q4 | P-Q4 | 18-NxN | NxN |
| 2-P-QB4 | PxP | 19-R-N3 | N-B5 |
| 3-N-KB3 | N-KB3 | 20-R-Q | Q-N3 |
| 4-N-B3 | P-QR3 | 21-N-R5 | R-KN |
| 5-P-K3 | P-K3 | 22-R(3)-Q3 | N-Q3 |
| 6-BxP | P-B4 | 23-P-K5 | N-K5 |
| 7-O-O | P-QN4 | 24-B-K3 | BxB |
| 8-B-N3 | B-N2 | 25-RxB | Q-B3 |
| 9-Q-K2 | QN-Q2 | 26-Q-N4 | K-K2 |
| 10-KR-Q | B-Q3 | 27-R(1)-K | P-B4 |
| 11-P-K4 | PxP | 28-PxPe.p.ch | PxP |
| 12-RxP | B-B4 | 29-Q-R3 | P-B4 |
| 13-R-Q3 | N-N5 | 30-P-B3 | N-N4 |
| 14-B-N5 | Q-N3 | 31-QxP | QR-B |
| 15-N-Q5 | Q-R4 | 32-RxPch | NxR |
| 16-R-KB | R-QB | 33-RxNch | K-Q |
| 17-N-B4 | KN-K4 | 34-Q-Q3ch | Resigns |

SWEDEN, 1961

KING'S INDIAN DEFENSE

| Taimanov | Liberson | Taimanov | Liberson |
|----------|----------|-----------|----------|
| White | Black | White | Black |
| 1-P-Q4 | N-KB3 | 15-N-K4 | B-B4 |
| 2-P-QB4 | P-B4 | 17-B-R6 | B-Q6 |
| 3-P-Q5 | P-KN3 | 18-KR-B | N-N2 |
| 4-N-QB3 | B-N2 | 19-P-N4 | B-K5 |
| 5-P-KN3 | O-O | 20-P-K6 | P-B3 |
| 6-B-N2 | P-Q3 | 21-R-R3 | R-KB |
| 7-N-B3 | N-R3 | 22-N-R4 | BxB |
| 8-O-O | R-N | 23-NxB | Q-K |
| 9-B-B4 | N-B2 | 24-R-R3 | P-KN4 |
| 10-P-QR4 | N-R3 | 25-N-K3 | K-R |
| 11-Q-Q2 | R-K | 26-BxNch | KxB |
| 12-P-K4 | B-N5 | 27-N-B5ch | K-R |
| 13-P-K5 | N-R4 | 28-Q-K3 | P-N4 |
| 14-B-R6 | N-N5 | 29-RPxP | R-N2 |
| 16-BxB | BxN | 30-R-R6 | Resigns |