

CHESS

BY ISAAC KASHDAN
INTERNATIONAL GRANDMASTER
Address letters to Chess Editor, L.A. Times
Los Angeles 53, Calif.

PACIFIC SOUTHWEST AT SANTA MONICA

One of the newer fixtures on the Southern California chess scene, and likely to be of outstanding importance, is the second annual Pacific and Southwest Open Championship. This will be contested Oct. 4 to 6 at Joslyn Hall, Wilshire and Lincoln Blvds. in Santa Monica.

The six-round Swiss system schedule will be completed in a single weekend, making it convenient for entrants from other areas. A number of other states and Mexico may be represented, as well as most of the leading Southland masters and experts.

The first round will start at 8 p.m. Friday, Oct. 4. Three rounds will be played on Saturday and two on Sunday. The tournament is open to all, with an entrance fee of \$11.95.

The minimum guaranteed first prize will be \$300 plus a trophy. Other top prizes will be \$150 and \$75. A special award of \$50 will go to the highest scorer outside of Los Angeles County.

Best scorers in various rating categories will receive prizes ranging from \$50 to \$15. Prizes will be increased or additional prizes announced if the number of entries warrants it.

The tournament is sponsored by the Santa Monica Bay Chess Club and the Herman Steiner Chess Club. Herbert T. Abel, who originally proposed the tournament, will again be the director. For advance registration or further information write to him at 4 Marine Terrace, Apt. D, Santa Monica.

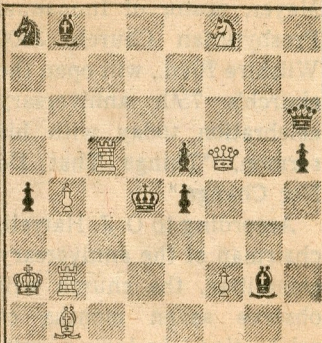
SO. CALIF. TOURNEY

Business is booming at the City Terrace Chess Club, 1126 N Hazard St., the scene of the Southern California Chess Championship this weekend.

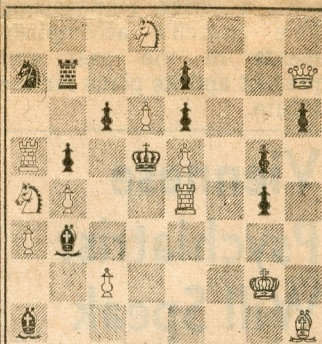
Two rounds will be played today, starting at 9 a.m. and 2 p.m. One round is scheduled for next Saturday morning, and the final two next Sunday.

The four winners, in addition

Sept. 22, 1963
TIMES PROBLEM 3521
By H. Ahues
BLACK 9



WHITE 8
White mates in two.
TIMES PROBLEM 3522
By V. Vaisman
BLACK 12



WHITE 12
White mates in three.
Several tries add interest to 3521, though there is little variety after the keymove. The bishop selfblocks lead to remarkable echoed play in the three-mover.

SOLUTION TO PROBLEM 3515: Q-KR2
SOLUTION TO PROBLEM 3516: P-B4
Threat, 2 Q-QR1; if N x KP, 2 Q-QN1; if N x BP, 2 Q-QB1; if N else, 2 P-K5.

SOLVERS' LIST

Five points—F. Aks, M. Chutorian, C. Foster, G. Guerrero, E. P. Kely, T. Lau, G. Leon-Martin, J. R. Martinez, F. J. Munson, I. E. Nordstrom, R. M. Stuarts.

Two points—D. G. Ball, F. S. Hartigan, D. C. Harwich, H. Lau, S. Miyamoto, G. F. Oglesby, S. Palmer, M. Roth, P. Samson, C. T. Tongko.

One point—S. Arndt, R. L. Benson, J. E. Gersch, J. T. Haag, Dr. J. A. Healy, M. Kohler, R. LaVallee, J. C. Losasso, J. C. Prout, M. Rosen, S. Schwarz, G. G. Scott, P. E. Sikora, D. Sloan, J. Sutton.

receiving cash prizes, will qualify for the California State Championship Tournament, which will be run at the Herman Steiner Chess Club over the Thanksgiving weekend.

Also qualified for the state finals are defending champion William Addison and California Open Champion Irving Rivise. Four entries representing Northern California will complete the list.

SANTA MONICA MASTERS

William Addison defeated Paul Quillen and S. Wanetick to take the lead in the round-robin Masters Tournament at the Santa Monica Bay Chess Club. In other results Norman Lessing beat Quillen and Tibor Weinberger beat Julius Loftsson.

In the regular Friday evening rapid transit tournament at the club, Quillen and Weinberger tied for first place with scores of 9-2. Addison and Loftsson tied with 8-3.

TOURNEY BULLETINS

A limited number of sets are still available of the daily bulletins issued during the Piatigorsky Cup Tournament. The 14 bulletins contain all the games played by the eight grandmasters, along with comments by your editor.

The sets are priced at \$3.50. To obtain them, write to Mrs. Lina Grumette, Herman Steiner Chess Club, 8801 Cashio St. Checks should be made to Piatigorsky Foundation.

Following are some of the tournament games, with comments from the bulletins. The drawn games were all hard fought, and worthy of careful examination.

PRECISE PLAY BY KERES

Olafsson misplayed the opening, losing a pawn early. He also got into serious time trouble, his usual custom, and lost the exchange while trying for complications.

The game was adjourned after 40 moves. Keres demonstrated the win by precise play.

KING'S INDIAN DEFENSE

Keres	Olafsson	Keres	Olafsson
White	Black	White	Black
1-P-Q4	N-KB3	27-QR-QB	P-K5ch
2-P-QB4	P-KN3	28-K-N2	P-B5
3-N-QB3	P-Q4	29-PxP	N-Q4
4-Q-N3	P-B3	30-KR-K	NxPch
5-PxP	PxP	31-K-R	BxP
6-N-B3	N-B3	32-R-B7	R-K
7-B-N5	N-QR4	33-R-Nch	N-N3
8-Q-Q1	B-N2	34-B-N5	P-QR4
9-P-K3	N-K5	35-P-KR4	K-R
10-NxN	PxN	36-P-R5	N-B
11-N-Q2	Q-Q4	37-R-K7	RxR
12-B-R4	N-B3	38-BxR	N-K3
13-B-B4	Q-KB4	39-R-N4	N-N2
14-Q-B2	O-O	40-NxP	B-K7
15-QxP	Q-KR4	41-R-B4	NxP
16-B-KN3	P-K4	42-R-B5	P-R5
17-P-Q5	B-B4	43-K-N	P-R3
18-Q-R4	QxQ	44-R-R5	B-Q8
19-BxQ	N-N5	45-B-N4	K-R2
20-K-K2	P-QN4	46-B-B3	BxN
21-BxP	NxQP	47-BxP	N-B5
22-B-QB6	N-N5	48-B-Q2	N-K7ch
23-BxR	B-Q6ch	49-K-B	N-Q5
24-K-B3	RxB	50-R-Q5	N-B7
25-P-N4	P-B4	51-R-Q7ch	K-N3
26-PxP	PxP	52-BxP	Resigns

Some complex tactics in the middle game kept the interest high. For a time it seemed that Petrosian was gaining ground, but there was never anything specific.

Reshevsky apparently played the best after 22 P-K5. If then 22 PxP: 23 PxP, N-Q6; 24 BxN, NxR; 25 BxB, when the two connected passed pawns would more than compensate for the exchange.

KING'S INDIAN DEFENSE

Petrosian	Reshevsky	Petrosian	Reshevsky
White	Black	White	Black
1-P-QB4	N-KB3	21-RxP	N-B4
2-P-Q4	P-KN3	22-P-K5	N-Q6
3-N-QB3	B-N2	23-R-Q4	PxP
4-P-K4	P-Q3	24-RxN	P-K5
5-P-B3	O-O	25-R-K3	PxB
6-KN-K2	QN-Q2	26-RxRch	QxR
7-B-N5	P-B4	27-RxP	P-QN4
8-P-Q5	N-K4	28-PxP	PxP
9-N-N3	P-KR3	29-Q-N3	N-B2
10-B-Q2	P-KR4	30-R-K3	Q-B
11-B-K2	P-K3	31-N-R2	N-Q3
12-P-B4	QN-N5	32-B-N4	Q-Q
13-P-KR3	N-R3	33-B-B3	N-B5
14-O-O	PxP	34-BxB	KxB
15-BPxP	R-K	35-Q-B3ch	K-B2
16-B-B3	N-Q2	36-R-Q3	Q-N3ch
17-KN-K2	R-N	37-K-R2	B-Q2
18-P-QR4	P-R3	38-N-N	Q-KB3
19-R-N	P-B4	Drawn	
20-P-QN4	PxNP		

PERPETUAL CHECK

This was a well-fought game between the two Americans. Benko had a strongly posted knight, but Reshevsky had enough compensation in open lines. After the rooks were traded, the queens began to roam.

The game was adjourned after 40 moves, but the draw was agreed on resumption. Benko could force perpetual check. If he tried to win, Reshevsky could have started his own series of checks.

KING'S INDIAN DEFENSE

Benko	Reshevsky	Benko	Reshevsky
White	Black	White	Black
1-P-Q4	N-KB3	22-N-B3	P-K4
2-P-QB4	P-KN3	23-N-Q5	N-Q5
3-N-QB3	B-N2	24-BxN	PxB
4-P-K4	P-Q3	25-P-QR4	R-K
5-B-K2	O-O	26-R-K	RxRch
6-P-B4	P-B4	27-QxR	R-K
7-N-B3	PxP	28-Q-Q2	Q-B4
8-NxP	N-B3	29-R-K	R-K5
9-B-K3	B-N5	30-RxR	QxR
10-BxB	NxB	31-K-B2	P-KR4
11-QxN	NxN	32-Q-K2	Q-B4
12-Q-Q	N-B3	33-P-N4	PxP
13-R-QB	Q-R4	34-PxP	Q-Q2
14-P-QR3	P-B4	35-K-N3	P-KN4
15-PxP	QxBP	36-Q-K7	PxPch
16-O-O	K-R	37-KxP	B-K4ch
17-P-QN4	QR-B	38-K-B3	QxRP
18-Q-Q2	P-N3	39-Q-B8ch	K-R2
19-N-Q5	Q-B2	40-Q-B7ch	K-R
20-P-R3	KR-Q	41-Q-B8ch	K-R2
21-KR-Q	P-K3	Drawn	

PERPETUAL AGAIN

Panno seemed to have all the better of the early middle game. After the exchange of queens, one of his rooks got to the seventh rank, with the other ready to follow.

Gligoric clearly had no defense to the invasion. His chance, if any, was a quick counter-attack. With a threat of mate at the critical juncture, he just managed to get his own rooks into a similar position.

Now either player could force perpetual check. Either player could also stop to take pawns or threaten mate, but could not maintain any threat long enough to do any good. Panno took almost all his time, then offered the draw.

KING'S INDIAN DEFENSE

Panno	Gligoric	Panno	Gligoric
White	Black	White	Black
1-P-Q4	N-KB3	20-RxQ	NxB
2-P-QB4	P-KN3	21-RxN	RxP
3-N-QB3	B-N2	22-R-B3	P-B3
4-P-K4	P-Q3	23-N-Q5	RxP
5-P-B4	O-O	24-NxPch	BxN
6-N-B3	P-B4	25-RxB	R-QB
7-B-K2	PxP	26-R(6)-B7	R-B7
8-NxP	N-B3	27-R-N7ch	K-B
9-B-K3	P-K4	28-R(N)-B7ch	K-N
10-NxN	PxN	29-P-KR3	R(5)-K7
11-PxP	PxP	30-R-N7ch	K-B
12-Q-R4	B-N5	31-R(N)-B7ch	K-N
13-R-Q	Q-N	32-R-N7ch	K-B
14-R-Q2	BxB	33-RxKRP	RxPch
15-RxB	Q-Q3	34-K-B	K-B
16-O-O	N-N5	35-R(R)-K7ch	K-B
17-R-Q	Q-K2	36-R-B7ch	K-N
18-QxBP	KR-B	37-R-N7ch	K-B
19-Q-Q7	QxQ	Drawn	