

CHESS

BY ISAAC KASHDAN
INTERNATIONAL GRANDMASTER
Address letters to Chess Editor, I.A. Times
Los Angeles 53, Calif.

CHESS ACTIVITY IN LABOR DAY TOURNEYS

The Labor Day weekend is always an active period in chess circles, particularly for Swiss system events in which many players go through a relatively few rounds, and the chance for trophies is open to all.

The main event in this area is the annual California Open Chess Championship, to be held at the Californian Hotel in Fresno. Exactly 100 participated last year, but considerably more are expected to be on hand this time.

Registration will be at the hotel Friday evening and Saturday morning up to 9:30 a.m. Three rounds will be played Saturday, starting at 10 a.m., 2:30 p.m. and 8:30 p.m. Two rounds each day are scheduled for Sunday and Monday.

The entrance fee is \$6 for seniors and \$5.50 for juniors under 21. In addition membership is required in the California State Chess Federation (annual dues \$2.50) and the U.S. Chess Federation (\$5). Non-members can sign up during registration.

The winner will receive a trophy and at least \$100. He will be seeded into the finals of the California State Championship, if not already eligible. A number of additional prizes will be awarded, the amounts depending on the number of entrants.

The tournament director will be Herbert T. Abel of Santa Monica. This will be his first time in this role at Fresno, after considerable and continuing experiences in running tournaments in the Southland. He asks that players bring their own sets and clocks.

WORLD'S FAIR OPEN

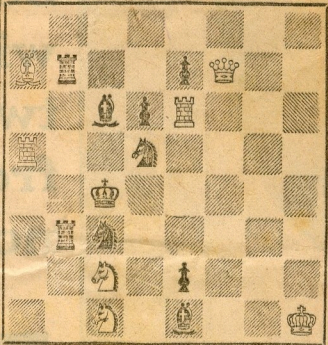
Visitors to the Seattle World's Fair next weekend can enter an open tournament sponsored by the Washington State Chess Federation in the International Mall. Eight rounds will be played, Saturday through Monday.

AUG. 26, 1962

TIMES PROBLEM 3409

By Dr. E. Bachl

BLACK 10



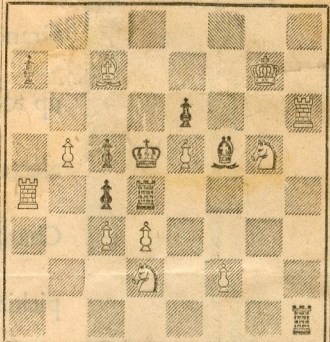
WHITE 7

White mates in two.

TIMES PROBLEM 3410

By W. Jorgensen

BLACK 8



WHITE 11

White mates in three.

Each black knight has two defenses in 3409, leading to distinct mates. One black piece does most of the work in 3410, with six different variations.

SOLUTION TO PROBLEM 3403: N-Q3.

SOLUTION TO PROBLEM 3404: Q-KB7.

If QR any or B-N2, 2 RxBch; if P-N7, 2 P-N5ch; if P-K5, 2 R-R5.

SOLVERS' LIST

PROBLEMS 3401 and 3402—Five points—M. Chutorian, J. Di Fulvio, K. E. Foglerund, W. W. Irwin, D. L. Knobel, I. E. Nordstrom, R. Roslin, W. C. Young. Three points—F. Aks, W. H. Griffith, J. Kaufman.

Two points—J. D. Bello, M. Hirsh, N. Lesser, G. F. Oglesby, M. Roth, R. Wilgus. One point—C. L. Baptist, J. Foley, J. T. Haag, M. C. Latham, G. Lopez, C. T. Tongko, M. Wilson.

PROBLEMS 3403 and 3404—Five points—F. Aks, M. Chutorian, J. Di Fulvio, G. E. Engebretsen, W. H. Griffith, W. W. Irwin, J. Kaufman, D. L. Knobel, F. J. Munson, I. E. Nordstrom, R. Roslin, C. T. Tongko, B. C. Young.

Three points—R. M. Stuart. One point—G. Borge, J. Foley, J. T. Haag, M. Hirsh, J. Lucas, A. Lum Jr., C. Mosby, G. F. Oglesby, B. Roberts, G. Winkelmann, Mrs. A. Zelman.

The tournament will be in two sections, one major for members of the U.S. Chess Federation, and one minor in which membership is not required. The entrance fee is \$5 for the major and \$2.50 for the minor. Registration will entitle players to admission to the Fair.

Trophies will be awarded for the first three places in each section. Cash prizes will depend on the funds available. For registration or inquiries write to Howard F. Weaver, 501 Olympic Place, Seattle 99, Wash.

ROCKY MOUNTAIN OPEN

Another Labor Day event is the second annual Rocky Mountain Open Tournament at the Hotel Westwood Ho in Phoenix, Ariz. Two games will be played each day, Saturday through Monday.

Prizes totalling \$300 have been guaranteed, with \$100 and a trophy to the winner. At least three other cash prizes and trophies will be awarded to top scorers. Additional prizes are offered for leaders in various categories.

The entrance fee is \$10, with membership required in the U.S. Chess Federation. For registration or further information, write to James Christman, tournament director, 1425 E Thornwood Dr., Scottsdale, Ariz.

BENKO TIED IN U.S. OPEN

Pal Benko of New York, defending his title in the U.S. Open Championship Tournament at San Antonio, Tex., was tied for first place with a score of 6-1 after seven rounds were completed.

Others with the same score were Arthur Bisguier of New York, Robert Byrne of Indianapolis, Stephen Jones of Austin, Tex., and Antonio Medina of Venezuela. Among other leaders were Stephen Matzner of Los Angeles and William Lombardy of New York.

STEINER MEMORIAL OPEN

The Herman Steiner Chess Club, 8801 Cashio St., announces a tournament in memory of the late Herman Steiner, distinguished master and former U.S. chess champion who founded the club and ran it for many years.

The tournament will be open to all, with an entrance fee of \$10.50. Prizes will be \$150, \$75 and \$50. Additional prizes will be awarded for the highest scores in Classes A, B and C.

Play will be over two weekends, with two rounds each day Sept. 15, 16, 22 and 23. Starting times will be 10 a.m. and 7:30 p.m. Herbert T. Abel will direct the tournament. Advance registration should be sent to Mrs. Lina Grumette at the club.

JUNIOR CHAMPIONSHIP

Lawrence Gilden of Takoma Park, Md., won the U.S. Junior Championship by a wide mar-

gin, scoring 8½-1½ in the tournament played at the Ramada Inn in Tucson, Ariz.

Second prize was taken by Peter Irwin of Summit, N.J., with 7-2. Third with 6-3, after using the tie-breaking formula, was Edward Formanek of Berwyn, Ill. Three Californians, Rod Freeman and Tom Lux of San Diego and Walt Cunningham of Arcadia, also finished with 6-3.

The top scorer with a Class A rating was Roy Hoppe of San Francisco, who finished with a tally of 5½-3½. The same score was achieved by Donn Rogosin of Los Angeles, who received the Class B award. In Class C the top score was 4½-4½ by Lloyd Kawamura, who came over especially from Honolulu.

SANTA MONICA FIESTA

Starting at 1 p.m. this afternoon there will be lots of chess activity at the Santa Monica Chess Club, Lincoln Park, 7th and Wilshire in Santa Monica.

The fiesta is sponsored by the Santa Monica Recreation Dept. as part of a sports festival organized by the city. The afternoon feature will be a rapid transit tournament played with clocks at the rate of five minutes per move.

At 7:30 p.m. Anthony Saily, new Pacific Southwest Champion, will take on all comers at simultaneous play. The charge for playing will be \$1.50. Spectators are welcome. The director of the fiesta is Allan Troy, president of the Southern California Chess League.

MASTER GAMES

Following is a selection of master games from recent European tournaments.

QUEEN'S GAMBIT DECLINED

Darga	Donner	Darga	Donner
W. Germ'y	Holland	W. Germ'y	Holland
White	Black	White	Black
1-P-QB4	N-KB3	15-NxQP1	Q-N2
2-N-QB3	P-K3	16-QxPch	QxQ
3-N-B3	P-Q4	17-NxQ	QR-B
4-P-Q4	B-K2	18-N(5)-K7	R-B2
5-PxP	PxP	19-NxB	PxN
6-B-N5	P-B3	20-QR-B	R-N
7-Q-B2	N-R3	21-P-B3	R-N3
8-P-QR3	P-KN3	22-P-Q5	N-Q3
9-P-K3	B-KB4	23-K-B2	R-R3
10-B-Q3	N-K5	24-P-KR4	P-R4
11-BxB	QxB	25-R-R2	R-N2
12-P-KN4	BxP	25-K-N3	R-N6
13-N-K5	B-B4	27-K-B4	P-R5
14-BxQN	PxB	28-N-Q4	Resigns

KING'S INDIAN DEFENSE

Perez	Durao	Perez	Durao
Spain	Portugal	Spain	Portugal
White	Black	White	Black
1-P-Q4	N-KB3	23-P-B5	Q-R4
2-P-QB4	P-KN3	24-Q-N2	B-Q5ch
3-N-QB3	B-N2	25-K-B	K-Q2
4-P-K4	P-Q3	26-Q-N7ch	K-K
5-B-N5	P-B4	27-QxQBPch	K-B
6-P-Q5	P-KR3	28-R-N5	N-K4
7-B-R4	Q-R4	29-Q-N7	P-R51
8-Q-Q2	P-KN4	30-RxQ	RPxP
9-B-N3	N-R4	31-K-K	B-K6
10-B-Q3	N-Q2	32-B-B	R-R8
11-KN-K2	N-K4	33-Q-N5	P-B6
12-O-O	N-N3	34-PxBP	P-N7
13-P-B4	NxB	35-PxB	P-N8(Q)
14-PxB	B-N5	36-R-R2	Q-N6ch
15-P-K5	O-O-O	37-K-Q	Q-B6ch
16-P-R3	P-R4	38-K-B2	RxB
17-KR-N	P-K3	39-P-Q6	N-B3
18-P-N4	Q-N3	40-K-N2	R-B7ch
19-N-R4	Q-R3	41-K-R	Q-R8ch
20-KN-B3	PxKP	42-N-N	B-Q5ch
21-PxRP	KPxBP	43-N-N2	R-B1
22-P-B6	PxBP	Resigns	