

CHESS

BY ISAAC KASHDAN
INTERNATIONAL GRANDMASTER
Address letters to Chess Editor, L.A. Times
Los Angeles 53, Calif.

EXPERT CANDIDATES TOURNEY TO START

The Southern California Chess League announces that the annual Expert Candidates Tournament will start during the week of May 7. There will be seven sections to be held in as many sponsoring clubs.

The tournament is open to all unrated players or those rated under 2000 by the U.S. Chess Federation. The entrance fee is \$5, of which \$2 will be returned upon completion of the schedule.

Players may enter whichever section is most convenient for them. Six rounds will be played in each section, on the regular meeting night of the sponsoring club. Section winners will meet in a four-round final at a time to be set.

Following are the clubs and their playing nights:

Downey Chess Club, Imperial Highway and Rives Ave.—Thursday.

Monterey Park Chess Club, Barnes Park, McPherrin and Newmark Sts.—Friday.

North Hollywood Chess Club, North Hollywood Park, Chandler and Tujunga Blvds.—Wednesday.

Santa Monica Bay Chess Club, Lincoln Park, 7th & Wilshire—Monday.

South Bay Chess Club, Recreation Center, 861 Valley, Hermosa Beach—Wednesday.

State Highways Chess Club, Dept. of Water & Power, 110 S Boylston St., Room 300—Wednesday.

Whittier Chess Club, Sorensen Park, Broadway and Rosehedge—Wednesday.

MORPHY DAY EVENTS AT GARVEY MEMORIAL PARK

The annual chess festival in honor of Paul Morphy will be held Saturday, May 19 in the Recreation Hall of Garvey Memorial Park, Dorothy and Kelburn Sts., in South San Gabriel. Activities are planned throughout the day from 10 a.m. to 10 p.m.

The main feature of the day will be the sixth annual match between the Yankees and the Rebels, in which teams of 50 or more are expected to compete.

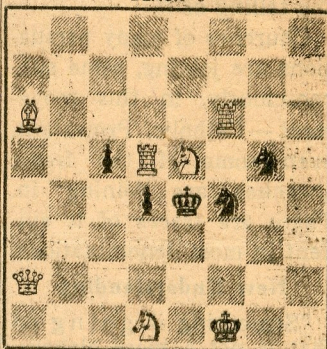
All players who reside north of Beverly Blvd. or the San Bernardino Freeway may register on the Yankee team. Those on the south of the line must enter the Rebel battalion. The match will be contested from 1 to 5 p.m. Players are requested to bring their own sets and clocks.

In addition to the growing traditional interest in the event, the Yankee-Rebel match serves as a warmup for the North-South match, scheduled for Sunday, June 3, at the Hotel Californian in Fresno.

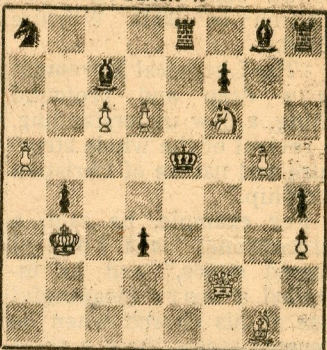
On the morning schedule for Morphy Day are several simultaneous exhibitions and lectures by well known chess personalities. Discussions of chess openings will be given in Spanish and German as well as English. Of special interest will be a simultaneous blindfold performance by Zoltan Kovacs, former California State champion.

Starting about 6:30 p.m. will be an open rapid transit tournament. Players will be limited

April 29, 1962
TIMES PROBLEM 3375
By O. Wiegos
BLACK 5



WHITE 7
White mates in two.
TIMES PROBLEM 3376
By H. Vetter
BLACK 19



WHITE 9
White mates in three.
No. 3375 is a brilliantly constructed problem, from the fine key to the varied mates. The three-mover is an example of a mating net, also with a considerable range of mates.

SOLUTION TO PROBLEM 3369: N-B8.
SOLUTION TO PROBLEM 3370: Q-QN7.
If Q-K8ch, 2 RxQ; if Q-Q4, 2 QxQ; else, 2 QxBch or 2 K-B2ch.

SOLVERS' LIST

Five points—F. Aks, E. J. Bolton, P. J. Burton, J. Di Fulvio, K. E. Fogerlund, C. Greifinger, R. Herrera, J. Kaufman, E. P. Kelty, I. E. Nordstrom, R. Roslin, R. M. Stuart, L. A. Victor, B. Yowell.

Three points—R. H. Duff, W. H. Griffith, A. W. Harshman, Dr. J. A. Healy, J. R. Martinez, C. T. Patterson, E. E. Penter, M. Rosen, C. T. Tongko, O. Wiseman.

Two points—G. F. Oglesby.
One point—R. Barrett, J. R. Bowen, E. G. Douglas, R. Eskin, I. L. Finkle, J. Foley, S. Glassberg, C. E. Mosby, M. M. Weiner.

chess championship. This is the first time in years that an American is so close to the coveted title.

We now have a report of some of the mundane details from Jerry G. Spann of Oklahoma City, chairman of the International Affairs Committee of the U.S. Chess Federation. The cost of entering our two players, plus one second, including travel and other expenses of the two-month event, is \$5,000.

Of this amount \$4,000 has been underwritten by the American Chess Foundation. The remaining \$1,000 is to be raised through a public drive by the USCF. Anyone interested should make his check payable to U.S. Chess Federation and send it to Chess Editor, Los Angeles Times.

All contributions to the fund will be acknowledged in Chess Life, the official organ of the

five minutes or a game. Morphy Day is organized by the Southern California Chess League with the sponsorship of the Los Angeles County Dept. of Parks and Recreation. There is no charge for any event except a small fee to enter the rapid transit tournament.

The park has a large swimming pool, children's playground and picnic areas. There is a refreshment stand and restaurants nearby. Thus chess players and their families can use Morphy Day as a real occasion to get together.

SAN BERNARDINO OPEN

The fourth annual open tournament of the San Bernardino Chess Club will be held next Saturday and Sunday at the San Bernardino Valley College, 701 S Mt. Vernon. Play starts at noon Saturday.

The first prize will be a minimum of \$75, with three other prizes to be awarded. The total prizes will be at least \$125. The winner will receive a trophy in addition. The entrance fee is \$7.50, with membership required in the U.S. Chess Federation.

Three games will be played Saturday at a time limit of 30 moves per hour. The final three games on Sunday will be at the rate of 50 moves in two hours.

For reservations write to either Dr. Allen Hendy, 954 W Marshall St., or Dr. Max Schlosser, 3866 Valencia Ave., both in San Bernardino.

FUNDS FOR CANDIDATES

We announced last week that Bobby Fischer and Pal Benko will be on hand for the opening Wednesday of the Candidates' Tournament at the Hotel Intercontinental in Curacao, Netherlands Antilles.

The winner will earn the right to challenge Mikhail Botvinnik of Moscow for the world

federation.

INTERZONAL TOURNAMENT

GRUNFELD DEFENSE

Bertok Yugoslavia White	Benko U.S.A. Black	Bertok Yugoslavia White	Benko U.S.A. Black
1-P-Q4	N-KB3	27-B-B3	P-QN4
2-P-QB4	P-KN3	28-PxP	P-R5
3-N-QB3	P-Q4	29-KR-K	N(2)-N3
4 N-B3	B-N2	30-N-N3	P-Q5
5-P-K3	O-O	31-BxP	PxB
6-Q-N3	P-K3	32-RxN	NxR
7-B-Q2	P-N3	33-QxNch	K-R
8-R-B	B-N2	34-QxQP	Q-Q
9-PxP	PxP	35-QxP	Q-Q4
10-B-K2	QN-Q2	36-P-B3	B-KB
11-N-QR4	N-K5	37-N-K4	R-R
12-O-O	R-N	38-Q-B2	QxN
13-B-N4	R-K	39-N-B3	Q-N5
14-B-N5	P-QR4	40-K-R	QxP
15-B-K	R-K3	41-Q-B2	B-N2
16-N-B3	P-QB3	42-Q-N3	BxKP
17-B-K2	P-KB4	43-QxQ	BxQ
18-N-Q2	N-Q3	44-K-N	B-Q3
19-P-QR4	Q-K2	45-N-K4	B-K4
20-N-B3	P-B5	46-N-N5	B-Q5ch
21-PxP	BxB	47-K-R	BxNP
22-N-K5	RxN	48-P-R4	B-KB3
23-QPxR	N-B5	49-R-K6	R-R3
24-Q-B2	B-QR3	50-N-B7ch	K-N2
25-N-K2	P-B4	Resigns	
26-Q-Q3	B-N2		

KING'S INDIAN DEFENSE

Korchnoi USSR White	Bilek Hungary Black	Korchnoi USSR White	Bilek Hungary Black
1-P-QB4	N-KB3	19-P-KR3	N-KB3
2-N-QB3	P-KN3	20-P-K4	Q-N3
3-P-Q4	B-N2	21-P-K5	N-K
4-P-KN3	O-O	22-N-K3	Q-N5
5-B-N2	P-Q3	23-Q-B	P-B4
6-N-B3	N-B3	24-P-K6	B-R5
7-O-O	P-QR3	25-P-R3	Q-N3
8-P-Q5	N-QR4	26-Q-B3	Q-B2
9-P-N3	P-B4	27-P-N4	N-KN2
10-Q-B2	R-N	28-K-R	PxP
11-N-Q2	P-QN4	29-PxP	R-N
12-B-N2	PxP	30-P-B5	N-N6
13-PxP	B-R3	31-P-B4	PxP
14-P-B4	N-N5	32-NxN	RxN
15-N-Q	RxB	33-QxP	R-N
16-QxR	B-N2	34-P-K7	P-R3
17-Q-B	BxR	35-Q-B8ch	Resigns
18-QxB	B-Q2		

SLAV DEFENSE

Uhlmann East Germany White	Teschner West Germany Black	Uhlmann East Germany White	Teschner West Germany Black
1-P-Q4	P-Q4	23-P-QN3	BxN
2-P-QB4	P-QB3	24-BxB	N-B7
3-N-KB3	N-B3	25-R-N	B-N5
4-N-B3	PxP	26-Q-Q	N-Q5
5-P-QR4	N-R3	27-R-R2	BxP
6-P-K3	B-N5	28-K-R	Nx5
7-BxP	P-K3	29-QxN	Q-Q4
8-O-O	N-N5	30-QxQ	RxQ
9-Q-K2	B-K2	31-P-QN4	B-N3
10-R-Q	O-O	32-P-R3	P-KR3
11-P-R5	Q-B	33-R-Q	P-N4
12-P-K4	P-B4	34-B-K3	BxB
13-P-K5	KN-Q4	35-PxB	P-R3
14-PxP	QxP	36-QR-Q2	KR-Q
15-NxN	PxN	37-K-N	R-N4
16-B-N3	QR-Q	38-RxP	RxR
17-B-KB4	N-B3	39-RxR	RxNP
18-R-R4	P-Q5	40-R-Q8ch	K-N2
19-B-B2	N-N5	41-R-Q7	K-B
20-B-K4	P-Q6	42-R-Q6	P-QR4
21-Q-Q2	Q-B5	Resigns	
22-R-K	Q-N4		