

CHESS

1532

BY ISAAC KASHDAN

INTERNATIONAL GRANDMASTER

Address letters to Chess Editor, L.A. Times
Los Angeles 53, Calif

TOURNEYS GALORE START FALL SEASON

The chess season is on in full swing with club, state and regional events for all classes of players. Some are limited to members of specific chess clubs, others are open to all.

The Southern California Chess Championship will be decided today, with the final two rounds starting at 9 a.m. and 2 p.m. at the City Terrace Chess Club, 1126 N Hazard St.

Ray Martin and Stephen Matzner led with 4½-½ each after five completed rounds. They drew with each other and won their other four games. Leo Kupersmith, who lost to Martin, was in third place with 4-1. Walt Cunningham followed with 3½-1½.

Pacific Southwest Open

Entries will be accepted until 7:30 p.m. Friday for the second annual Pacific and Southwest Open Tournament at Joslyn Hall, Wilshire and Lincoln Blvds. in Santa Monica. The entry fee is \$11.95.

Six rounds will be contested, starting at 8 p.m. Friday. Three rounds are scheduled Saturday, with starting times 9 a.m., 1:30 p.m. and 7 p.m. The final two on Sunday will be at 9 a.m. and 2 p.m.

The minimum guaranteed prizes are \$300, \$150 and \$75, with a trophy for the winner. An additional \$50 will be awarded to the highest scorer outside of Los Angeles County. Prizes from \$50 to \$15 will go to the best performers in various rating categories.

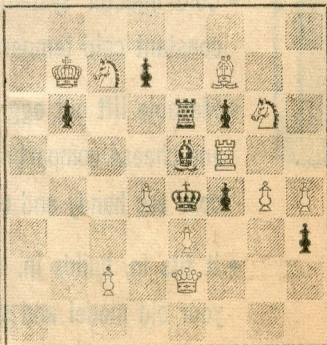
The tournament is sponsored by the Santa Monica Bay Chess Club and the Herman Steiner Chess Club. Herbert T. Abel will be the director.

Amateur Tournament

The one tournament of the year which offers good prizes for the non-expert chessplayer is the Southern California Amateur Championship.

The third annual running of this event will be at Joslyn Hall in Santa Monica over two

SEPT. 29, 1963
TIMES PROBLEM 3523
By H. Laue
BLACK 8



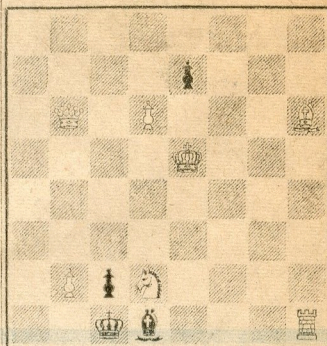
WHITE 11

White mates in two.

TIMES PROBLEM 3524

By R. Pille

BLACK 4



WHITE 7

White mates in three.

Mates are set in 3523 if Black plays BxP or PxP or R-B3. These are cleverly changed after the key move. Curiously, the safest square for the black king in 3524 is just where he is.

SOLUTION TO PROBLEM 3517: N-B5.

SOLUTION TO PROBLEM 3518: R-KR8.

if B-Q3, 2 P-N8(Q); if B-K4, 2 P-K8(Q); if B-Q1 2 PxB(B).

SOLVERS' LIST

Five points—E. Aabor, F. Aks, Mrs. R. Coogan, K. E. Fogelund, W. H. Griffith, G. Guerrero, L. Kiefling, G. Leon-Martin, J. R. Martinez, F. J. Munson, J. E. Nordstrom, M. Roth, R. M. Stuarts.

Four points — D. C. Harwich.
Three points — P. J. Burton, M. Chutorian, O. H. Ketchum, S. Palmer, R. Smith, L. J. Stevens, C. T. Tongko. **Two points** — R. J. Dorus, L. A. Prusa.

One point — J. E. Gersch, J. T. Haag, F. S. Hartigan, Dr. J. A. Healy, R. Jaffe, D. Kageyama, M. F. Kohler, R. LaVallee, S. Miyamoto, J. C. Prout, G. G. Scott, S. Schwarz, M. Wallace, E. J. Wright.

A number of solvers gave 1 B-Q5 as the key move in 3517. There is no mate after NxP.

weekends, Oct. 26 and 27 and Nov. 2 and 3. Eligible are all players rated under 2,000 by the U.S. Chess Federation.

Unrated players will be considered by the registration committee. Anyone determined to be too strong for the group will be turned down. The intention is to eliminate the masters and experts who regularly take prizes in other events.

The top prizes will be \$300, \$150 and \$75. The winner will receive a trophy in addition. The entrance fee is \$10. Herbert T. Abel will be the director.

PENROSE WINS SIXTH BRITISH CHESS TITLE

Jonathan Penrose won the British chess championship for the sixth year in succession, scoring 8½-2½ in the tournament at Bath, Eng. He did not lose a game, winning six and drawing five.

N. Littlewood was a close second with a score of 8-3. His loss to Penrose in their individual encounter turned out to be the key game. Littlewood also lost to M. J. Franklin and drew twice, while winning seven games.

Franklin took third place with 7½-3½. Tied at 7-4 were O. M. Hindle and J. E. Littlewood. The tournament was a Swiss system event with 28 participants.

N. Littlewood has become noted for daring, speculative attacks where anything can happen. Following are examples of his intriguing style.

CARO-KANN DEFENSE

N.L./flew'd	Wheatcr't	N.L./flew'd	Wheatcr't
White	Black	White	Black
1-P-K4	P-QB3	13-R-K	P-N3
2-P-Q4	P-Q4	14-P-B5	P-K4
3-N-QB3	PxP	15-B-QB4	O-O
4-NxP	N-Q2	16-Q-N3	P-K5
5-B-Q3	KN-B3	17-PxP	RPxP
6-N-N5	P-K3	18-R-B	K-N2
7-N-K2	B-Q3	19-B-B4	BxB
8-P-KB4	P-B4	20-RxB	P-R3
9-P-B3	PxP	21-N-B5ch	PxN
10-PxP	Q-K2	22-Q-N3	N-R4
11-O-O	P-QN3	23-Q-R4	NxR
12-N-N3	B-N2	24-Q-R7ch	Resigns

KING'S INDIAN DEFENSE

Fazekas	Littlewood	Fazekas	Littlewood
White	Black	White	Black
1-N-KB3	P-KN3	18-N-R5	K-R
2-P-B4	B-N2	19-P-B3	R-N
3-N-B3	P-Q3	20-R-B	P-B5
4-P-Q4	B-N5	21-B-B2	N-N3
5-P-K3	P-K4	22-P-QR4	B-Q2
6-B-K2	N-QB3	23-PxP	Q-KB
7-O-O	KN-K2	24-P-N6	Q-R3
8-P-Q5	N-QN	25-P-N7	BxP
9-P-KR3	B-Q2	26-PxR(Q)	BxP
10-P-QN4	O-O	27-KxB	P-N5
11-R-N	P-KB4	28-R-KR	PxPch
12-P-B5	B-KB3	29-KxP	N-R5ch
13-N-Q2	P-KN4	30-BxN	BxB
14-P-K4	B-K	31-RxB	QxR
15-N-B4	P-QR3	32-Q-N	Q-R6ch
16-PxQP	PxQP	Resigns	
17-B-K3	P-N4		

FISCHER ON CHESS

U.S. Champion Bobby Fischer of Brooklyn has been writing a monthly article in Chess Life, the official publication of the U.S. Chess Federation.

At times his language is as forceful as some of his great chess combinations. In the current September issue he discusses the Western Open Tournament which he won recently.

Says Fischer, "The players at

the Open were surprisingly strong. I was expecting 20-move crushers but it didn't happen. In fact, the opposition was keen enough that I consider five or six out of eight of my games played there to be superior to any games played in the Piatigorsky Tournament with the exception of Najdorf's win against Keres."

Fischer then annotates the following two games to prove his point. Our readers can make their own comparison since we have published many of the Piatigorsky Cup games.

We must assume Fischer was smiling when he made the following comment after White's 10th move in the game against Reinhard: "Nine out of 10 grandmasters, including Petrosian, Botvinnik, Keres and Smyslov, would have played this move, yet it loses by force."

Actually, the move 10 P-K5 does not look at all tempting, either at first glance or after some analysis. Fischer punishes it convincingly enough, to be sure. Whether this qualifies him for the world championship is another matter.

QUEEN PAWN OPENING

Berliner	Fischer	Berliner	Fischer
White	Black	White	Black
1-P-Q4	N-KB3	28-Q-Q3	PxP
2-P-QB4	P-K3	29-PxP	R-B
3-N-QB3	P-Q4	30-Q-B2	Q-B3
4-PxP	NxP	31-R-N2	Q-Q5
5-P-K4	NxN	32-P-KR3	Q-R8ch
6-PxN	P-QB4	33-R-N	Q-K4
7-N-B3	PxP	34-Q-K2	P-N4
8-PxP	B-N5ch	35-Q-QB2	P-N5
9-B-Q2	BxBch	36-Q-Q3	P-QR4
10-QxB	O-O	37-Q-B2	Q-B3
11-B-Q3	P-QN3	38-Q-R2	Q-B6ch
12-O-O	B-N2	39-K-R4	R-Q
13-KR-Q	N-B3	40-Q-B2	Q-B6
14-Q-N2	Q-B3	41-QxQ	PxQ
15-QR-B	KR-Q	42-R-QB	R-Q6
16-B-N5	QR-B	43-R-QN	K-N2
17-N-K5	NxN	44-R-N5	P-R5
18-PxN	Q-B5	45-R-QB5	P-R6
19-QRxR	RxR	46-K-N2	R-K6
20-Q-Q4	P-N4	47-R-B4	K-B3
21-P-B3	P-N5	48-P-R4	K-K4
22-B-K2	PxP	49-K-B2	R-R6
23-PxP	K-R	50-K-N2	R-Q6
24-K-R	B-R3	51-P-R5	K-B5
25-Q-B2	BxB	52-P-R6	K-K6
26-QxB	QxB(4)	53-R-B7	K-Q7
27-R-KN	P-B4	Resigns	

KING'S FIANCHETTO GAME

Reinhard	Fischer	Reinhard	Fischer
White	Black	White	Black
1-N-KB3	N-KB3	14-B-K3	B-R3
2-P-KN3	P-KN3	15-R-K	KR-Q
3-B-N2	B-N2	16-Q-B	N-Q5
4-O-O	O-O	17-K-R2	QR-B
5-P-Q3	P-Q3	18-NxN	PxN
6-P-K4	P-B4	19-B-N5	P-Q6
7-N-B3	N-B3	20-P-R3	PxP
8-P-KR3	R-N	21-PxP	Q-N3
9-B-K3	P-QN4	22-Q-K3	B-Q5
10-P-K5	PxP	23-Q-B3	RxBP
11-BxP	P-N5	24-Q-N4	P-Q7
12-N-K4	NxN	Resigns	
13-PxN	Q-R4		

CLAIRE BENEDICT TOURNEY, LUCERNE DUTCH DEFENSE

Darga	Duckstein	Darga	Duckstein
W. Germany	Austria	W. Germany	Austria
White	Black	White	Black
1-P-Q4	P-K3	14-P-KR4	N-Q3
2-N-KB3	P-KB4	15-N-KN5	BxN
3-P-KN3	N-KB3	16-PxB	Q-K2
4-B-N2	B-K2	17-NxP!	PxN
5-O-O	O-O	18-Q-B7	N-N4
6-N-B3	P-Q4	19-QxB	NxP
7-B-B4	P-QN3	20-QR-K	QR-Q
8-N-QN5	N-K	21-BxP	Q-N5
9-P-B4	B-N2	22-Q-B7	QxP
10-PxP	PxP	23-K-N2	N-N4
11-Q-N3	P-B3	24-Q-N7	N-B4
12-N-B3	K-R	25-Q-B6	N-Q5
13-Q-B2	N-Q2	26-Q-N6	Resigns