

## LEAGUE TEAMS MEET IN SANTA MONICA

Perhaps the greatest gathering of chess players in local history will take place at 1:30 p.m. this afternoon at Joslyn Hall, Lincoln and Wilshire Blvds. in Santa Monica, for the grand opening of the Southern California Chess League team matches.

A record number of 38 teams have registered, each with six-man lineups. These have been organized into four major divisions, based on the average ratings of the team members. Each division will contest a separate round-robin tournament.

A number of clubs have entered more than one team, with three teams each representing the Santa Monica Bay Chess Club, the Herman Steiner Chess Club and the Monterey Park Chess Club. In no case, however, will two teams from the same club compete in the same division.

The winner in Division A will be declared the league team champion. The present titleholder is Santa Monica. The two leading teams in Divisions B, C and D will move up to the next higher division for 1964. The two lowest teams in Divisions A, B and C will move down to balance the schedule.

Most of the teams will meet in Santa Monica for the opening round. The exceptions are noted in the following schedule. Later rounds will be played at the rate of one a week with each club playing host at its home quarters about half the time.

The publicity director for the league is Gordon Barrett, 1744 Redesdale Ave., L.A. 26. All results should be sent to him.

Following are the opening pairings:

**DIVISION A**—City Terrace vs. Santa Monica, South Bay vs. Steiner, L.A. State College vs. Van Nuys, and Covina vs. Pasadena (at Covina, Friday). Monterey Park has a bye.

**DIVISION B**—San Fernando vs. Santa Monica, Independents vs. Steiner, Alondra vs. Westchester and Polonia vs. Downey (at Polonia, Wednesday). Pasadena has a bye.

**DIVISION C**—L.A. State College vs. Santa Monica, State Highways vs. Steiner, Van Nuys vs. Monterey Park, Downey vs. Riverside-San Bernardino, and Whittier vs. Polonia (at Whittier, Wednesday).

**DIVISION D**—Long Beach State College vs. El Segundo, Covina vs. Westchester, South Bay vs. San Fernando, City Terrace vs. Plummer Park, and Whittier vs. Monterey Park (at Whittier, Wednesday).

## RESHEVSKY SCORES IN BLINDFOLD FAST CHESS

Samuel Reshevsky climaxed his visit to Los Angeles with a brilliant exhibition of blindfold rapid transit play at the Club Del Mar in Santa Monica, winning nine games and drawing three without a loss.

Sitting on the stage of the ballroom without sight of board or men, Reshevsky called off his moves without hesitation on the sound of the timing bell. His opponents sat at a table some distance away, microphones being used to transmit moves and messages.

A large audience sat enthralled throughout, watching the games on a large wallboard, on which the moves were made as soon as announced by the players. Only Reshevsky had to use his visual memory and insight to follow the score.

The best record against the grandmaster was made by Jack Moskowitz, who drew two games and lost one. That one was a queen and pawn ending which Reshevsky handled particularly well.

Zoltan Kovacs drew once and lost twice, all in hard fought battles. Less successful were Mrs. Jacqueline Piatigorsky and Mrs. Lena Grumette, who each lost three times.

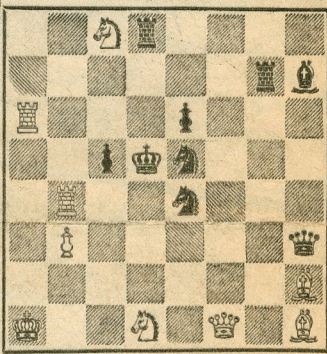
At the opening Al Bisno, who organized the event with the co-operation of the management of the Club Del Mar, introduced the contestants and gave some historical background, particularly on Reshevsky's career. Your editor then explained the procedure for the occasion and directed the play.

March 3, 1963

TIMES PROBLEM 3463

By T. H. Bwee

BLACK 9



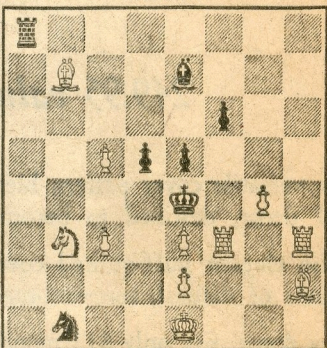
WHITE 9

White mates in two.

TIMES PROBLEM 3464

By E. Wirfanen

BLACK 7



WHITE 11

White mates in three.

SOLUTION TO PROBLEM 3457: Q-Q5ch.

SOLUTION TO PROBLEM 3458: N-K4.

If QxKN, 2 N-Q4ch; if RxN or QPxN

or K-Q2, 2 QxBch; if K-N4, 2 Q-R4ch.

The black knight has the maximum number of moves in 3463, and manages to run into trouble each time. In 3464 it is the black bishop that seems to get in the way at every step.

## SOLVERS' LIST

**Five points**—F. Aks, M. Chutori-an, J. Di Fulvio, L. B. Foley, P. Lippman, F. Munson, I. E. Nordstrom, C. E. Stern, R. M. Stuarts.

**Two points**—D. J. Ameling, R. J. Bontempo, M. Carroll, C. Foster, Dr. J. A. Healy, H. E. Jugend, O. H. Ketchum, W. Lands, Mrs. T. T. Lanzi, R. J. Manley, M. Rosen, M. Roth, C. Stinson, C. T. Tongko, G. R. Turgeon.

**One point**—C. C. Bell, R. O. Dosch, D. L. Finley, J. T. Haag.

the tournament director, assisted by Harry Borochoy and Jack Moskowitz.

Following are the final games:

## NIMZO-INDIAN DEFENSE

Addison White	Reshevsky Black	Addison White	Reshevsky Black
1-P-Q4	N-KB3	13-Q-Q3	NxB
2-P-QB4	P-K3	14-Q-B3	QN-B3
3-N-QB3	B-N5	15-N-K5	R-B
4-P-K3	O-O	16-P-B3	N-Q3
5-B-Q3	P-Q4	17-P-K4	PxP
6-N-B3	P-B4	18-PxP	N-Q2
7-O-O	P-QN3	19-B-B4	NxN
8-P-QR3	BxN	20-BxN	N-B5
9-PxB	PxBP	21-B-N3	P-QN4
10-BxBP	B-N2	22-KR-N	Q-Q2
11-R-K	QN-Q2	Drawn	
12-B-Q3	B-K5		

## BENONI COUNTER GAMBIT

Addison White	Evans Black	Addison White	Evans Black
1-P-Q4	N-KB3	24-B-B3	PxP
2-P-QB4	P-B4	25-RPxP	QR-KB
3-P-Q5	P-K3	26-BxN	PxB
4-N-QB3	PxP	27-Q-N5ch	K-R
5-PxP	P-Q3	28-R-B3	RxR
6-N-B3	P-KN3	29-PxR	Q-B4
7-P-KN3	B-N2	30-P-B4	QxQ
8-B-N2	O-O	31-PxQ	R-B4
9-O-O	R-N3	32-P-B4	RxQP
10-N-Q2	R-N	33-R-K7	P-QR3
11-P-QR4	N-B2	34-N-N7	K-N
12-N-B4	KN-K	35-N-Q8	R-Q8ch
13-B-B4	P-B4	36-K-B2	B-Q6
14-Q-Q2	P-N3	37-N-K6	B-B4
15-QR-B	B-QR3	38-R-N7ch	K-R
16-P-N3	Q-Q2	39-R-K7	K-N
17-B-R6	P-QN4	40-R-N7ch	K-R
18-BxB	NxB	41-R-K7	BxN
19-PxP	NxNP	42-RxB	K-N2
20-NxN	BxN	43-K-B3	P-Q4
21-N-R5	N-R4	44-R-QB6	R-Q6ch
22-KR-K	P-B5	45-K-B2	Drawn
23-R-B3	R-B2		

## KERES VS. JUNIORS

In an exhibition tour of England, Paul Keres of Estonia, one of the world's top grandmasters, had a rough time against a group of juniors and students. Playing 30 games, Keres won 14, drew six and lost 10.

Here is an idea of what he was up against, in a game won by G. M. Sheldrick of Cambridge University.

## FRENCH DEFENSE

Keres White	Sheldrick Black	Keres White	Sheldrick Black
1-P-Q4	P-K3	16-P-KR4	P-N5
2-P-K4	P-Q4	17-N-R2	P-KR4
3-N-QB3	B-N5	18-B-B4	N-B4
4-P-K5	P-QB4	19-B-N5	QNxQP
5-P-QR3	BxNch	20-B-B6	R-QB
6-PxB	Q-B2	21-R-K	R-KN
7-N-B3	P-QN3	22-RxRch	QxR
8-B-Q3	B-R3	23-Q-R4ch	Q-Q2
9-O-O	BxB	24-Q-R6	Q-B2
10-PxB	PxP	25-N-B	K-Q2
11-PxP	N-QB3	26-N-K3	P-N6
12-B-N5	P-KR3	27-NxN	PxPch
13-B-R4	P-KN4	28-KxP	Q-B7ch
14-B-N3	KN-Q2	29-K-K3	NxNch
15-R-B	Q-Q2	Resigns	

## U.S. CHAMPIONSHIP

## QUEEN'S INDIAN DEFENSE



## FINAL PLAYOFF GAMES

The two final games in the interzonal playoff series, in which California champion William Addison opposed former U.S. champions Larry Evans and Samuel Reshevsky, were both drawn.

As a result Reshevsky was the indisputable winner, scoring two wins and two draws for a final tally of 3-1. Addison and Evans tied 1½-2½, each having lost once to Reshevsky and drawn their other games.

Reshevsky won the right to represent the United States in the next Interzonal Tournament, along with Bobby Fischer and Arthur Bisguier, the top prize winners in the recent U.S. championship tournament.

The playoff series was sponsored by the Piatigorsky Foundation and took place at the Herman Steiner Chess Club, 8801 Cashio St. Your editor was

## QUEEN'S INDIAN DEFENSE

Benko White	Rossolimo Black	Benko White	Rossolimo Black
1-P-Q4	N-KB3	23-P-B4	OxP
2-P-QB4	P-K3	24-QxQ	BxQch
3-N-KB3	P-QN3	25-K-R	N-K5
4-P-K3	B-N2	26-N-Q3	B-Q5
5-B-Q3	P-B4	27-BxB	PxB
6-O-O	B-K2	28-B-B3	B-R3
7-P-QN3	O-O	29-RxR	RxR
8-B-N2	PxP	30-K-N	R-B6
9-PxP	P-Q4	31-N-N4	RxB
10-QN-Q2	QN-Q2	32-NxB	P-Q6
11-Q-K2	N-R4	33-N-N4	P-Q7
12-P-N3	P-N3	34-K-N2	R-B7ch
13-QR-B	N-N2	35-K-N	R-K7
14-KR-Q	R-B	36-K-B	RxP
15-N-B	N-KB4	37-K-N	R-K7
16-N-K3	NxN	38-N-B2	N-B6
17-QxN	R-K	39-K-B	R-R7
18-B-B	B-B	40-K-N	NxR
19-B-N2	Q-K2	41-KxR	N-B6
20-N-K	N-B3	42-N-K3	P-Q5
21-P-B5	PxP	Resigns	
22-PxP	P-K4		

## ICELAND, 1962

### KING'S INDIAN DEFENSE

Jonsson White	Kristiansson Black	Jonsson White	Kristiansson Black
1-P-Q4	N-KB3	11-O-O-O	P-QN4
2-P-QB4	P-KN3	12-K-N	N-N3
3-N-QB3	B-N2	13-N-B	P-N5
4-P-K4	P-Q3	14-BxN	PxN
5-P-B3	O-O	15-Q-K3	R-N!
6-B-K3	P-B3	16-BxQ	RxPch
7-Q-Q2	P-K4	17-K-R	P-B7!
8-KN-K2	QN-Q2	18-N-N3	PxR(Q)ch
9-P-Q5	PxP	19-KxR	RxB
10-BPxP	P-QR3	Resigns	