

CHESS

BY ISAAC KASHDAN
INTERNATIONAL GRANDMASTER

Address letters to Chess Editor, L.A. Times
Los Angeles 53, Calif.

AMATEUR TOURNNEY AT SANTA MONICA

For the fourth year the Santa Monica Chess Club will sponsor a tournament in which the amateurs will have things their own way. No masters or experts allowed, if you please.

The event is the Southern California Amateur Championship, which will be held in Jostlyn Hall, Wilshire and Lincoln Blvds. in Santa Monica over the weekend of Oct. 30 to Nov. 1.

Anyone can enter who is rated under 2,000 by the U.S. Chess Federation or who has no rating. The latter group will be considered by a committee, and anyone who proves too strong may be eliminated.

The winner will receive a cash prize of \$300 and a trophy. Other guaranteed prizes are \$150 for second and \$75 for third. The entrance fee is \$10. It is not necessary to belong to any club or other organization.

The first round will start at 8 p.m. Friday, Oct. 30. Three rounds will be played on Saturday, starting at 9 a.m., 1:30 p.m. and 7 p.m. The concluding rounds on Sunday will start at 9 a.m. and 2 p.m.

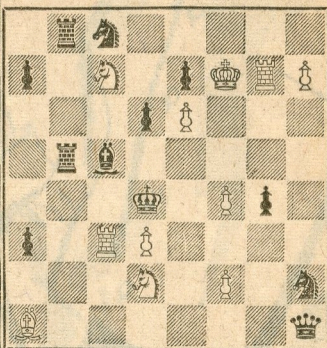
Chess clocks will be used, with a time limit of 45 moves in 1½ hours for the first two games. The limit will be 50 moves in two hours for the remainder of the schedule.

For those who find it inconvenient to get to Santa Monica on Friday night, arrangements may be made to play the first round in advance. In that case the result must be posted, and the entry fees paid, before Oct. 30.

The tournament director is Herbert T. Abel. For further information call him after 6 p.m. at EX. 6-5363.

Oct. 4, 1964
TIMES PROBLEM 3629

By G. Leon-Martin
BLACK 12



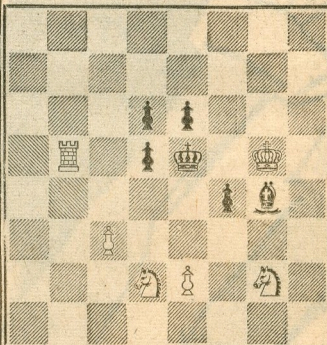
WHITE 11

White mates in two.

TIMES PROBLEM 3630

By G. Leon-Martin

BLACK 6



WHITE 6

White mates in three.

Our problems today were submitted by G. Leon-Martin of Long Beach. He was a colonel in the French army and for a number of years the head of the French Chess Problem Society. He will be 81 this month.

Opening and closing of lines are the features in 3629. The bishop cannot hold all the key squares in the three-mover.

SOLUTION TO PROBLEM 3623: N-R2
SOLUTION TO PROBLEM 3624: B-B2
If B-R4, 2 Q-Q3; if B else, 2 B-Q4ch;
if P-B4, 2 Q-R7.

CUNNINGHAM KEEPS LEAD

Walt Cunningham defeated Steve Matzner in the third round of the Tournament of Champions, to retain his position at the head of the field of 20 with a score of 3-0.

Ray Martin, who took an important point from Irving Rivise, is alone in second place with 2½-½. Leo Kupersmith might move ahead, with 2-0 and an unfinished game with Robert Jacobs. Tied at 2-1 are Edward Kennedy and William Maillard.

Close to the leaders are Jacobs, Zoltan Kovacs and Arthur Spiller. They are tied with scores of 1½-½ and each has a game to complete.

The tournament is being played Sunday mornings at the Herman Steiner Chess Club, 8801 Cashio St. Darrell Rader is the director.

Following are details of the third round and a game from the tournament.

Round 3—Cunningham 1, Matzner 0; Martin 1, Rivise 0; Currie ½; Kennedy ½; Kupersmith 1, Earnest 0; Maillard 1, Loftsson 0; Jacobs 1, Parker 0; Barrett ½, Oganessov ½; Hultgren 0. Rains 1; Pease 0. Rogosin 1; Spiller vs. Kovacs, adjourned. From Round 1—Currie 1, Parker 0.

NIMZO-INDIAN DEFENSE

Earnest White	Loftsson Black	Earnest White	Loftsson Black
1-P-Q4	N-KB3	13-P-K4	N-B3
2-P-QB4	P-K3	14-QPXP	PxKP
3-N-QB3	B-N5	15-NXP	NxN
4-P-QR3	BxNch	16-BxN	PxP
5-PxB	P-B4	17-B-K3	N-R4
6-P-K3	P-QN3	18-BxBP	BxB
7-N-B3	B-N2	19-PxB	RxRch
8-B-Q3	N-K5	20-RxR	NxP
9-Q-B2	P-B4	21-Q-Q3	Q-R4
10-O-O	O-O	22-QxN	R-QB
11-N-Q2	Q-R5	23-B-Q6	Resigns
12-P-B3	N-KB3		

CENTRAL CALIF. OPEN

The annual Central California Open Tournament will be held at the YMCA in San Jose starting at 7:30 p.m. Friday, Oct. 16. Five rounds will be played that weekend, with two games each on Saturday and Sunday.

The prize fund is guaranteed at \$300, and may be considerably higher, depending on the number of entries. The entry fee is \$10 for those whose rating is 1900 or over, and \$7 for those rated less than that or unrated.

In addition membership is required in the U.S. Chess Federation (\$5) and in the California State Chess Federation (\$2.50). A special rate of \$11.50 will include all memberships and fees for those who have never belonged to USCF.

The tournament director will be USCF President Lt. Col. Ed Edmondson. Advance entries and requests for information should be sent to him at 210 Britton Way, Mather AFB, Calif. 95655.

LARSEN TOPS IN HOLLAND

Bent Larsen of Denmark is the bright shining star of the Western Europe chess firmament, after his brilliant feat of tying for first place in the recent Interzonal Tournament.

Thus when Larsen entered the fourth annual tournament organized by the IBM Corp. in Amsterdam, Holland, he was established as favorite. He justified this faith by scoring five wins and four draws for the winning total of 7-2.

SOLVERS' LIST

Five points—F. Aks, P. J. Burton, Mrs. R. Coogan, W. Darrow, G. Leon-Martin, G. McCollister, F. J. Munson, I. E. Nordstrom, C. Tuttle.

Three points—G. E. Engebretsen, M. Lucas. Two points—Dr. J. A. Healy, W. J. Heyneker, N. Lesser, M. J. Lucas, B. Owens, D. Owens, M. Regan, C. E. Stern, W. B. Tudor.

One point—J. C. Ague, C. Crail, J. Foley, S. Ford, O. H. Ketchum, E. Knuth, M. M. Krieger, S. Schwarz.

Donner of Holland took the second prize with a score of 6½-2½. He lost to his countryman Kuipers, while winning five games and drawing three.

Duckstein of Austria finished third with 6-3 after losing to both Larsen and Donner. Other leading results were Dr. Lehmann, East Germany, 5½-3½, and von Scheltinga, Holland, 5-4.

Remaining final scores in the strong 10-man field were Kuipers, 4½-4½; Barcza, Hungary, and Pirc, Yugoslavia, 3½-5½; Enevoldsen, Denmark, 3-6, and Van Geet, Holland, ½-8½.

In a second tournament held at the same time, two Yugoslavs took the top prizes. Karaklaic was far ahead with 8-1, followed by Bertok with 6-3. Crabbendam of Holland was third with 5-4.

Following are games from the event.

Duckstein Austria White	Larsen Denmark Black	Duckstein Austria White	Larsen Denmark Black
1-P-K4	P-QB4	19-P-B3	B-QN4
2-N-KB3	N-QB3	20-N-Q4	PxP
3-P-Q4	PxP	21-BxP	N-B3
4-NxP	P-Q3	22-KR-Q	NxN
5-N-QB3	P-K3	23-BxN	B-QR5
6-P-KN3	NxN	24B-Q3	Q-Q4
7-QxN	N-K2	25-R-K	BxB
8-B-K3	N-B3	26-B-K4	QxBch
9-Q-Q2	B-K2	27-QxQ	B-B4
10-P-B4	O-O	28-R-N	B-N4
11-B-N2	R-N	29-K-B2	K-B
12-P-QR4	P-QR3	30-KR-QB	K-K2
13-O-O	Q-B2	31-K-K3	BxQch
14-P-KN4	B-Q2	32PxB	RxR
15-N-K2	KR-B	33RxR	K-Q3
16-P-R5	N-Q	34-BxRP	P-KN3
17-QR-B	P-Q4	35-P-B5	NPxP
18-P-N4	Q-B5	Resigns	

CARO-KANN DEFENSE

Lehmann E. Germany White	Barcza Hungary Black	Lehmann E. Germany White	Barcza Hungary Black
1-P-K4	P-QB3	14-P-Q5	BxN
2-P-Q4	P-Q4	15-QPxP	BxP
3-PxP	PxP	16-Q-N4ch	K-R
4-P-QB4	N-KB3	17-QR-Q	G-B2
5-N-QB3	P-K3	18-BxP	R-KN
6-N-B3	B-N5	19-Q-R3	R-N2
7-B-Q3	PxP	20-R-Q7	Q-B5
8-BxBP	O-O	21-RxBP	RxR
9-O-O	P-QN3	22-BxR	Q-B2
10-B-KN5	B-N2	23-B-N6	B-K4
11-N-K5	N-B3	24-R-Q	R-KN
12-BxN	PxB	25-R-Q7	Resigns
13-NxN	QBxN		

SICILIAN DEFENSE

Enevoldsen Denmark White	Pirc Yugoslavia Black	Enevoldsen Denmark White	Pirc Yugoslavia Black
1-P-K4	P-QB4	14-N-Q	QR-K
2-P-KB4	N-QB3	15-PxP	BPxP
3-N-QB3	P-Q3	16-N-N5	B-Q2
4-B-N5	B-Q2	17-P-N4	N-B3
5-N-B3	P-KN3	18-P-B3	B-B3
6-O-O	B-N2	19-N-B3	Q-R4
7-BxN	BxB	20-Q-R2	PxP
8-Q-K2	P-K3	21-BxP	QxP
9-P-Q3	N-K2	22-BxB	RxB
10-B-Q2	O-O	23-P-K5	R-B2
11-QR-K	Q-B2	24-N-N5	R-N2
12-P-KR4	P-QN4	25-N-QB3	Q-N6
13-P-R5	P-N5	26-QN-K4	Resigns

TANDEM AT CITY TERRACE

The City Terrace Chess Club, 1126 N. Hazard St., will hold a tandem rapid transit tournament Wednesday evening. Two players are partners on each side, playing alternately without consultation.

Entertainment is assured for both players and spectators in this event. Prizes will be awarded, based on the entrance fee of \$1.25.