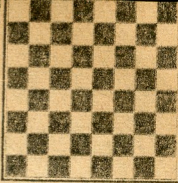


5/11/69

# chess



by richard shorman

This fourth round game from the Peninsula Open was destined to cost the loser a probable tie for first place and \$100 in prize money.

White: Rex Wilcox. Black: David Blohm.

Sunnyvale, April 27, 1969, USCF Open Division.

French Defense

1 P-K4	P-K3	17 BxR	QxR
2 P-Q4	P-Q4	18 Q-Q3(i)	Q-N3
3 N-QB3	B-N5	19 B-R3	N/3-Q5
4 P-K5	P-QB4	20 NxN	NxN
5 P-QR3	B-R4(a)	21 P-B3	N-B3
6 P-QN4	PxQP(b)	22 B-K3	Q-N7
7 Q-N4(c)	N-K2(d)	23 0-0(j)	R-N1ch
8 QxNP(e)	R-N1	24 K-R1	P-Q5(k)
9 QxRP	PxN(f)	25 PxP	NxKP(l)
10 PxB	QN-B3	26 BPxN	B-B3ch
11 P-B4	B-Q2	27 P-Q5	QxRP(m)
12 N-B3	QxP	28 QxQ	BxPch
13 R-QN1(g)	0-0-0	29 B-N2	RxB
14 Q-Q3	N-B4	30 Q-B5ch(n)	K-Q1
15 R-N5(h)	Q-R5	31 QxBch	Resigns
16 QxBP	RxP		

(a) Considered somewhat inferior to 5 . . . BxNch.

(b) If 6 . . . PxNP, then White exerts pressure after 7 N-N5 N-QB3 (7 . . . P-N6ch 8 P-B3 B-B2 9 QxP P-QR3 10 NxPch QxN 11 P-QR4, followed by B-R3 with even greater pull) 8 PxP! BxPch 9 P-B3 B-K2 10 Q-N4.

(c) Sharpest.

(d) Practically forced. The alternatives are I. 7 . . . Q-B2 8 QxNP QxNch 9 N-Q1 QxR 10 QxR K-B1 11 PxB; II. 7 . . . P-KN3 8 PxP PxN 9 P-KR4!; III. 7 . . . K-B1 8 PxP PxN 9 Q-N4ch (Also good are 9 P-QR4 and 9 N-B3. N-K2 10 QxBP QN-B3 11 B-Q2, with advantage to White in each case.

(e) Interposing 8 PxP PxN does not allow Black the resource in note (f).

(f) After 9 . . . B-B2! analysis favors Black, e.g., 10 N-N5 P-R3 11 NxPch QxN 12 N-K2 B-Q2 13 B-N2 QN-B3 14 0-0-0 0-0-0 15 NxP NxN 16 BxN N-B4 17 Q-R3 NxP 18 RxN QxKP, with ample compensation for a Pawn (Unzicker).

(g) More incisive is 13 N-N5 R-KB1 14 R-QN1 0-0-0 15 NxBP RxN 16 QxR B-K1! 17 QxPch B-Q2 18 Q-B6, and after 18 . . . B-B4 19 B-N5 BxP 20 BxN BxR 21 BxPch KxB 22 QxNch K-B1 20 0-0 the position remains critical for both sides (Shidkov — Gorenstein, 1963).

(h) Inasmuch as Black's 16th move convincingly refutes this attempt to win the QBP, better must be 15 N-N5.

(i) White's exposed King and poor development weigh heavily against him. Perhaps 18 N-N5 or 18 B-R3 offers more practical chances.

(j) Suicidal. Resistance with 23 Q-Q2 is essential.

(k) The winning move, clearing the long white diagonal for the decisive entrance of Black's QB.

(l) The losing move, allowing White to close the dreaded diagonal at the crucial moment. Correct is 25 . . . NxQP! and Black lives forever.

(m) One last tiny ray of hope . . .

(n) Up in smoke.

★ ★ ★

## ALAMEDA HIGH SCHOOL OPEN

The eleventh annual High School Open Tournament, sponsored by the Bay Area Chess League, will take place May 23-24 in the Alameda High School cafeteria. (Take the 23rd Avenue exit from the Nimitz to Park Street, turn right onto Central Avenue and travel to Oak Street.) Trophies and books will be awarded to the winners in each of three sections, open to all junior and senior high school students. Entry fee is only \$1. Round one starts at 7 p.m., Friday, May 23, Ted Anderson directing.

★ ★ ★

## WALNUT CREEK OPEN

Co-sponsored by the Walnut Creek Chess Club and the Central California Chess Association, the Walnut Creek Open Chess Championships will be held May 24-25 in the Walnut Creek Recreation Center (Civic Drive). All entry fees collected in the USCF Expert-Master Division will be returned in two cash prizes: 1st place, 65 per cent; 2nd place, 35 per cent. Cash prizes, which may fluctuate depending on number of entries, will be awarded for first place in three additional divisions ("A"-\$25, "B"-\$20, "C"-\$15). The Junior Section winner (12 years old or younger with less than a "B" rating) will receive a trophy. Entry fee for the USCF divisions is \$5 plus membership (\$2 for the Junior Section). Round one of this five-round Swiss system tournament begins at 12:30 p.m., Saturday, May 24, Richard Shorman directing.