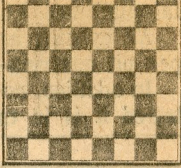


chess

7/13/69
by richard shorman



TOURNAMENT RESULTS

The sixth annual Arthur B. Stamer Memorial Tournament, a USCF rated event, was directed by Mike Goodall at the Mechanics' Institute Chess Club in San Francisco, July 4-6. The seven round Swiss attracted 83 entries, with 22 winners sharing in a prize fund increased from \$675 to \$1000. Complete results:

Master Section

Earl Pruner, Los Angeles, 6½-½, \$275; James Schmitt, San Francisco, and John Grefe, Berkeley, 6-1, \$125 each.

Expert Division

William Bills, Oakland, Max Burkett, San Francisco, Mike Morris, San Francisco, and Borel Menas, San Francisco, 5½-1½, \$30 each.

Class "A"

Peter Grey, San Francisco, and Bernard Lainson, Monterey, 5-2, \$45 each; James Iwashita, Los Gatos, Alan Lavergne, Menlo Park, and Alfred Raymond, San Francisco, 4½-2½, \$6.66 each.

Class "B"

Dr. A. Eydal, San Francisco; Gregory Wong, Fresno; Russell Freeman, Oakland, and Hiawatha Bradley, San Francisco, 4-3, \$22.50 each.

Class "C"

Gerald Veberka, San Francisco, 3½-3½, \$35; Earle Ipsen, San Francisco, and Robert Fitzsimmons, San Francisco, 3-4, \$10 each.

Unrated Section

Steven Gee, San Francisco, and Mark Peach, Berkeley, 3½-3½, \$22.50 each.

Junior Division

Takashi Kurosaki, San Francisco, 4½-2½, \$35; Stephen Kornher, Rohnert Park, and David Amkraut, Palo Alto, 4-3, \$10 each.

★ ★ ★

White pays the penalty for not driving back the enemy pieces in time to avoid a mass concentration in the center.

White: Tony Saguisag. Black: Donald Dean.
Stamer Memorial, San Francisco, July 4, 1969.

Two Knights' Defense

1 P-K4	P-K4	13 P-R5(i)	B-B4
2 N-KB3	N-QB3	14 Q-Q1(j)	PxQP
3 B-B4	N-B3	15 NxRP(k)	Q-K2(1)
4 N-N5	P-Q4	16 NxR	QxP
5 PxP	N-Q5(a)	17 NxP	PxN
6 P-QB3(b)	P-N4	18 N-Q2(m)	N-K6ch
7 PxN(c)	PxB	19 PxN	B-Q6ch
8 PxP	NxP(d)	20 Q-K2	QxKP
9 P-Q4(e)	B-N5ch	21 QxB	QxQch
10 K-B1(f)	0-0(g)	22 K-K1	R-K1ch
11 Q-B2	P-N3	23 K-Q1	BxN
12 P-KR4	P-QB4(h)	24 R-R3	R-K8mate

(a) Britz's Variation, a complex tactical offshoot of the Two Knights' Defense.

(b) White's backward development should be enough return for a Pawn after 6P-Q6 QxP 7 BxPch (7NxBP Q-B3) K-K2 8 B-N3 (8P-QB3 P-KR3 9 PxN PxN 10 B-N3 PxP 11 P-Q3 B-N5 12 P-B3 RK1! 13 K-B2 RxP, Katz — Estrin, Moscow, 1947) NxB 9 RPxB P-KR3 10 N-KB3 P-K5 11 N-N1 K-B2 (Bogoljubov — Rubinstein, Stockholm, 1919).

(c) Standard is 7 B-B1! NxP! 8 N-K4 N-K3 9 BxPch B-Q2 10 BxBch QxB 11 0-0 B-K2! (MCO 10 gives only 11 . . . P-B4.) 12 P-Q4 PxP 13 PxP 0-0 14 QN-B3 QR-Q1 15 NxN QxN 16 N-B3 QxQP, with a level game (Estrin and Petrosian, *Zweispringerspeil im Nachzuge*, Hamburg, 1966, pp. 43-44).

(d) A natural reaction, but inferior to 8 . . . QxP 9 N-KB3 N-Q2 10 0-0 B-N2 11 R-K1 0-0-0 (Denk-Gruenfeld, correspondence, 1946-47).

(e) White misses his opportunity to neutralize Black's threats and remain a Pawn up with 9 Q-B3! QxN 10 QxN R-QN1 11 0-0 B-N2 12 Q-N5ch K-Q1 13 P-B3 P-QR3 14 QxBP QxKP (Estrin and Petrosian, op. cit., pg. 39).

(f) Sad necessity, as interposing drops a piece: 10 B-Q2? QxN 11 BxB NxB 12 Q-R4ch B-Q2 13 QxN Q-B8ch 14 K-K2 QxR.

(g) Black cannot exploit his advantage more vigorously by 10 . . . P-B6 (threatening 11 . . . PxP 12 BxP QxN (because of 11 PxP B-R3ch 12 K-N1 NxP 13 NxN BxN 14 Q-B3! 0-0 15 QxB. Superior to the text, however, is 10 . . . B-K2 11 P-KR4 P-KR3 12 N-K4 B-KB4 13 QN-B3 NxN 14 NxN 0-0.

(h) Still correct is 12 . . . B-K2.

(i) Now Black takes over. Interpolating 13 P-R3 yields good play after 13 . . . B-R4 14 QxP.

(j) If 14 QxP, then 14 . . . PxQP and 15 . . . R-B1 wins.

(k) A brilliant shot and White's best practical chance. Of course not 15 . . . KxN 16 PxPch K-N1 17 R-R8ch KxR 18 Q-R5ch and 19 Q-R7 mate.

(1) Very fine. White's attack will soon spend itself, leaving Black's army poised for a crushing counter-offensive.

(m) Loses fast, but there is no defense.

★ ★ ★

CCCA CHAMPIONSHIP AND CALIFORNIA STATE QUALIFIER

The Central California Chess Association's Adult and Junior Championship, incorporating the Berth Competition for the California State Championship, will be held July 19-20 at the Willow Pass Park Community Center, Salvio Street and East Olivera Road, Concord. The winner of the Berth Division (entry fee \$10 plus USCF and CSCF membership) will receive the berth allotted the CCCA for the California State Championship in January 1970, a trophy, and a portion of the net entry fees for travel expenses. Prizes in the Championship Division (entry fee \$5 plus USCF membership) are First — 50 per cent. Second — 30 per cent, and First "A" — 20 per cent of the net entry fees. Also scheduled are a Reserve Division (\$3 plus USCF membership) for players whose rating is below 1800 and a Junior Division (\$1 only) for all under 16 years old. Round one begins at 11 a.m., Saturday, July 19.