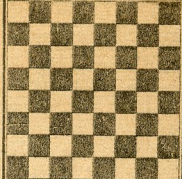


12/15/68  
**chess**



by **richard shorman**

**TOURNAMENT RESULTS**

Twenty-eight youngsters played in the 1968 CFNC Junior Chess Championships of Contra Costa County, December 7-8. CFNC Director Roy McCollough was in charge of the event, held at the Mt. Diablo YMCA in Pleasant Hill, and presented plaques and trophies to the winners. Complete results:

**Section I (14-15 yrs. old)**

1-Jim Shearer, Livermore, 4-1; 2-Jim Eliason, Walnut Creek, 4-1; 3-Bruce Wagner, Orinda, 3½-1½; 4 - Rick Moore, Concord, 3½-1½; 5 - Nick Schaefer, Walnut Creek, 3-2.

**Section II (11-13)**

1-Pete Shearer, Livermore, 4½-½; 2-Terry Garnett, Concord, 4-1; 3-David Wait, Walnut Creek, 3-2; 4-Jim Harner, Berkeley, 2½-2½; 5-John Henderson, Concord, 2-3.

**Section III (10 and under)**

1 - John Fichtenkort, Concord, 4½-½; 2 - Mark Ettlin, Concord, 4-1; 3 - Tom Falbo, Rohnert Park, 3-2; 4 - Chris Moncrief, Belmont, 2½-2½; 5 - Colleen Meier, Belmont, 2½-2½.

★ ★ ★

Junior tournament winner Jim Shearer gives an object lesson on how to exploit weak, passive plays in the Pirc Defense.

1 P-K4	P-Q3(a)	8 P-KR3	B-K3(g)
2 P-Q4	N-KB3	9 N-B3	N-R3(h)
3 N-QB3	P-KN3	10 P-K5(i)	PxP
4 B-K3(b)	B-N2(c)	11 PxP	N-R4
5 Q-Q2	0-0	12 N-KN5	R-K1
6 B-KR6(d)	BxB(e)	13 QxRPch	K-B1
7 QxB	B-N5(f)	14 Q-R8mate	

a) In the hands of the average player the Pirc Defense represents a logical attempt to simplify Black's opening problems by playing according to a pre-conceived pattern. It can be used against all first moves and is based on sound modern opening concepts. On the minus side, this defense lacks punch and permits White too much freedom in the center.

(b) Sharper positions arise after 4 P-B4, with Black's K4 the focus of attention. White intends an early confrontation of the black-shaped Bishops.

(c) If 4 . . . N-N5, trying to trade Knight for Bishop, then 5 B-N5 P-KR3 (or 5 . . . B-N2 6 P-B3 N-KB3 and White gains a tempo over the variation 4 B-N5 B-N2 6 Q-Q2) 6 B-R4 thwarts Black's plan. Better than the text move, however, is 4 . . . P-B3! 5 Q-Q2 Q-R4, with counterplay.

(d) Premature. Shearer commented after the game that unless the Bishop goes to KR6 immediately Black can play R-K1 and then answer B-KR6 with BR1!, avoiding the exchange. The basis for this opinion may have been a section in How To Think Ahead in Chess by Horowitz and Reinfeld (Simon and Schuster, New York, 1956, pp. 109-11) in which the author's emphasize the importance of retaining Black's "dragon Bishop" in the Sicilian Defense. Although there are similarities between the book game and this one, there are essential differences, too, chief among them being Black's inability to control his own K4. The continuation might run 6 0-0-0 R-K1 7 P-KR4 QN-Q2 8 P-R5 NxRP 9 B-K2 N-4-B3 10 P-B4, and White's threats are overpowering.

(e) Fatally weakening the black squares on the King side. Successful defense is possible after 6 . . . (NN5! 7 BxB KxB 8 P-KR4 P-KR3!

(f) Black must fight for the dark squares by 7 . . . N-N5 8 Q-N5 P-K4, e.g., 9 QxQ RxQ 10 N-Q5 R-Q2 11 P-KR3 P-QB3.

(g) It would have been safer to go back to QB1, after which Black can hold out longer against 9 N-B3 with 9 . . . QN-Q2 10 N-KN5 R-K1 11 P-B4 N-B1.

(h) Both 9 . . . N-B3 and 9 . . . QN-Q2 lose to 10 P-Q5, so Black plays his Knight to the only other square.

(i) The key move in White's plan to construct a mating net around Black's King. Overall, a creditable performance by the new junior champion.

★ ★ ★

**INVITATIONAL CLASS TOURNAMENT**

Sponsored by the Oakland Chess Club, this CFNC rated, five-round Swiss system tournament is open to all chess players with a current rating of "A", "B" or "C" who register before the appropriate 20-man section is filled. The tournament director will send each player the name and address of his opponent, both of whom will then arrange the time and place of their game. Each round will last about two weeks. Cash prizes of \$40, \$25 and \$10 will be awarded to the winners in each section. Entry fee is \$5. Please write or call Richard Lee, 2500 Wallace St., Apt. 2, Oakland, Calif. 94606, tel.: 261-2058, for additional rules and information.