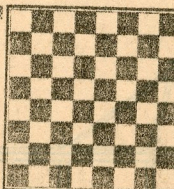


# chess

by richard shorman



U. S. Champion Bobby Fischer once again forces reassessment of a critical line in the Sicilian Defense. Condensed notes by Gufeld and Lazarev in *Shakhmaty v SSSR*, No. 1, 1969.

White: Victor Ciociltea.  
Netanya, Israel, 1968.

Black: Robert Fischer.

Sicilian Defense

1 P-K4	P-QB4	17 N-Q5(g)	PxN
2 N-KB3	P-Q3	18 PxP	BxB
3 P-Q4	PxP	19 KR-K1ch	K-Q1
4 NxP	N-KB3	20 N-B6ch	K-B1
5 N-QB3	P-QR3(a)	21 QxBch	K-N2
6 B-KN5	P-K3	22 NxP(h)	Q-Q2!
7 P-B4	B-K2	23 Q-R5	R-KN1(i)
8 Q-B3	Q-B2	24 N-B6(j)	P-R4!(k)
9 0-0-0(b)	QN-Q2	25 QxRP	R-N3
10 P-KN4	P-N4	26 K-N1	R-KR3(l)
11 BxN(c)	NxB(d)	27 Q-N8	RxBP
12 P-N5	N-Q2	28 Q-N2(m)	K-N3
13 P-B5(e)	N-B4!(f)	29 R-Q4	Q-B4
14 P-B6	PxP	30 P-N4	PxP
15 PxP	B-B1	31 RxPch	K-B2
16 B-R3	P-N5	32 Resigns(n)	

(a) Anyone who plays 1 P-K4 against Fischer must be prepared for this line, which the American grandmaster has successfully employed for about ten years running.

(b) Black enjoys fewer options after 9 P-B5, preventing 9 ... QN-Q2 in reply.

(c) Currently judged strongest. White cannot afford routine development, e.g., 11 B-N2 B-N2 12 KR-K1 P-N5 13 N-Q5 PxN 14 PxP K-B1 15 N-B5 R-K1 16 Q-K3 B-Q1 (Bernstein — Fischer, U.S. Championship, (1958), and White's attack is gradually repulsed.

(d) And not 11 ... BxB because of 12 BxP. PxB 13 N-4xNP followed by 14 NxPch.

(e) White burns his bridges behind him. Less committing is 13 P-QR3.

(f) The Knight must defend K3. Playing 13 ... BxPch only exposes the Bishop to White's retaliation, e.g., 14 K-N1 N-K4 15 Q-R5 or 14 ... 0-0 15 PxP PxP 16 Q-N4, with powerful threats.

(g) White has no choice. If the Knight retreats, then White's center comes under fire after 17 ... B-QN2.

(h) Thus far neither player has made an original move. *Shakhmatny byulleten* recommended 22 NxP as favoring White in February, 1966. This game shows, however, that White must either find some improvements along the way or reject the whole variation beginning with 13 P-B5.

(i) Threatening 24 ... Q-N5 25 QxRP QxN.

(j) An "aggressive" move that seals White's doom. But even 24 N-Q3 leaves Black with a decisive material superiority.

(k) Now both Knights (!) protect Black's King from attack.

(l) A fine "in between move" that drives the enemy Queen to an unfavorable square.

(m) White's last chance at counterplay is 28 R-KB1, trying for Black's weak. BP. But after 28 ... N-K5 (threatening 29 ... N-Q7ch) 29 K-R1 P-R5, Black still has the upper hand.

(n) Resignation here might seem premature but is really well founded. A typical variation runs 31 Q-Q2 Q-B7 32 R-K2 Q-B8ch 33 K-N2 R-B6 34 N-Q4 RxPch! 35 KxR R-R6ch 36 KxR Q-R8mate!

★ ★ ★

## RAPID TRANSIT TOURNAMENT

The Hayward Chess Club, 2058 D St., will host a rapid transit tourney (10 seconds a move) tomorrow, March 17, at 8 p.m. Monthly winner receives a certificate, annual winner a trophy. Entry fee is 35 cents.

★ ★ ★

## USCF MEMBERSHIP DISCOUNTS

The Central California Chess Association (CCCA) offers its members USCF memberships at a 20 per cent discount, if sent to Leonard Trottier, CCCA Treasurer, 5315 MacDonald Ave., El Cerrito, Calif., 94530.

The reduced rates are \$8 a year for adults (regularly \$10) and \$4 for those under 21 at expiration of membership (regularly \$5). Membership in the United States Chess Federation includes a nationally recognized chess rating, a year's subscription to *Chess Life* (a \$6.50 value in itself), plus discounts on selected chess books and equipment.