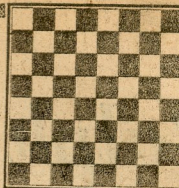


# chess

by richard shorman



## TOURNAMENT RESULTS

Twenty-nine players participated in the third annual Concord Open Chess Championships held February 15-16 at the Willow Pass Community Center. Complete results:

### Class "A"

1. John Bulash, Mountain View, 4-1, \$35.

### Class "B"

1. Rene Saguisag, San Francisco, 5-0 (overall winner), \$25.
2. James Shearer, Livermore, 3½-1½ (2 wins, 3 draws), Honorable Mention.

### Class "C"

1. Myron Johnson, Oakland, 3-2 \$6.66.
2. Manuel Rivera, Pittsburg, 3-2, \$6.66
3. Douglas Turney, Albany, 3-2, \$6.66.

### Junior Section

1. Mark Ettlin, Concord, 3½-2½, trophy.

★ ★ ★

One of the best played games from this event was won by Haywardite Lupe Lopez, who scored 3½-1½ in the USCF "B" Division (losing only to the tournament winner).

White: Lupe Lopez. Black: Jim Fosaaen. Concord. February 16, 1969.

King's Gambit Accepted.

1 P-K4	P-K4	23 BxB	PxB
2 N-QB3	N-KB3	24 P-R5	N-Q2
3 P-B4	P-Q4	25 RxNP	R-B2
4 KPxP(a)	PxP	26 RxKP(j)	P-QB4
5 N-B3	NxP	27 R-N5(k)	R-QB1
6 B-B4(b)	NxN	28 K-B2	N-K4
7 NPxN	Q-K2ch(c)	29 R-N3ch	K-R1(1)
8 Q-K2(d)	QxQch	30 B-B5	R-Q1
9 KxQ	B-Q3	31 RxP	R-KN2(m)
10 P-Q4	N-Q2(e)	32 RxR	KxR
11 K-B2	0-0	33 R-B7ch	K-B1
12 R-K1	N-N3	34 RxQRP	NxP
13 B-Q3	P-KB3(f)	35 P-R6	R-Q7ch
14 P-QR4	B-KN5	36 K-N3	N-K6
15 N-Q2	P-N4(g)	37 B-K4	P-B4
16 N-K4	K-N2	38 B-B3	RxP
17 P-B4	B-K2	39 RxP	K-N1
18 NxNP	B-N5(h)	40 P-R7	R-R7
19 N-K6ch	BxN	41 R-K7(n)	N-B8ch
20 RxB	B-B6	42 K-R3	K-B1
21 R-N1	BxPch	43 R-B7	R-R6
22 K-B3	B-K6(i)	44 P-R8-Qch	Resigns (0)

(a) Beginning the transformation from a Vienna Game to a variation of the King's Gambit.

(b) Considered best is 6 NxN QxN 7 P-Q4 B-K2 8 P-B4 (8 BxP? Q-K4ch) Q-K4ch 9 B-K2 N-B3 10 0-0 B-KB4 11 R-K1, with approximate equality.

(c) A strong move psychologically, inducing White to allow an exchange of Queens, but 7. . . B-Q3 leaves Black better off.

(d) If 8 K-B2, then Black replies 8. . . Q-B4ch 9 P-Q4 QxB 10 R-K1ch B-K2 11 B-R3 N-B3 12 P-Q5 0-0 13 BxB NxN 14 RxN Q-B4ch, winning a Rook.

(e) Black should strive for more harmonious development, e.g., 10. . . 0-0 11 K-B2 N-B3 12 R-K1 B-KB4. . .

(f) Stubbornly hanging on to the gambit Pawn. Better is 13. . . P-KR3.

(g) He can still return the Pawn for a reasonable position after 15. . . KR-K1 16N-K4 Q R-Q1 17 NxB RxR 18 KxR RxN 19 BxP R-K3ch 20 K-B2 N-Q4.

(h) Leads to unfavorable complications, but 18. . . PxN 19 RxBch R-B2 20 RxRch KxR 21 P-B5 N-Q4 22 P-R3 B-K3 23 BxP is even less attractive.

(i) Perhaps 22 . . . B-K4 23 R-K7ch (23 BxBP R-B2 24 P-R5 N-Q2 25 B-K3 N-B1) R-B2 24 RxRch KxR 25 BxBP BxB' 26 KxB R-QN1 offers Black a sporting chance.

(j) Naturally not 27 RxQBP? N-K4ch.

(k) White wins a little faster with 27 K-B2.

(l) Or 29 . . . K-B1 30 B-B5 R-B3 31 R-QN8ch K-K2 32 KR-N8 N-Q2 33 KR-K8ch K-Q3 34 R-N7 R-B2 35 R-K6 mate.

(m) What else?

(n) Immediately 41 R-QB7 saves a move.

(o) Black's last hope vanished when White sidestepped 44 R-B8ch K-N2 45 P-R8/Q R-R6ch 46 B-R5 RxB mate.

★ ★ ★

### WHERE TO PLAY CHESS

The Hayward Chess Club, 2058 D St. (Hayward Arts and Science Center). Monday and Friday, 8-12 p.m.

Cherryland Cafe, 22472 Meekland Ave. (corner of A St. and Meekland Ave.), Hayward. Evenings, 10 p.m. to 6 a.m.

The Fremont Chess Club, 37720 Fremont Blvd. (Centerville Jr. High School). Thursday, 7-10 p.m.

The Newark Chess Club, 35501 Cedar Blvd. (Newark Community Center). Tuesday, 7-10 p.m.