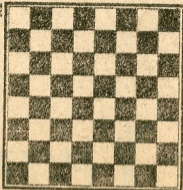


MARCH 9, 1969

chess

by richard shorman



Philidor's Defense is certainly much better for the club player than its "solid but cramped" reputation among grandmasters implies. Black's very lack of counterplay often provokes all-out attacks against a sound position. The usual reaction sets in and the aggressor suddenly finds himself battling vastly superior development.

White: W. Heidenfeld.
Johannesburg, 1955.
Philidor's Defense

Black: J. Wolpert.

| | | | |
|------------|---------|---------------|---------|
| 1 P-K4 | P-K4 | 13 P-B4(e) | N/3-N5! |
| 2 N-KB3 | P-Q3 | 14 Q-Q5ch(f) | N-B2 |
| 3 P-Q4 | N-KB3 | 15 Q-B4(g) | B-R5ch |
| 4 N-B3 | QN-Q2 | 16 K-Q1 | B-K3! |
| 5 B-QB4 | B-K2(a) | 17 Q-K2 | N-B7ch |
| 6 BxPch(b) | KxB | 18 RxN(h) | BxR |
| 7 N-N5ch | K-N1(c) | 19 P-B5(i) | Q-N8ch |
| 8 N-K6 | Q-K1 | 20 K-Q2 | N-K4! |
| 9 NxBP | Q-N3 | 21 N-Q1(j) | B-K8ch |
| 10 NxR | QxNP | 22 QxB | Q-Q5ch |
| 11 R-B1 | PxP(d) | 23 Resigns(k) | |
| 12 QxP | N-K4 | | |

(a) By transposition, a typical Philidor formation has been reached. Now, before Black can consolidate, White spots a way to tear open the enemy King side, prevent his castling, and pick up the exchange in the bargain.

(b) International master Vladimir Vukovic has analyzed the most dangerous line out to endgame equality: 6 PxP PxP 7 BxPch KxB 8 N-N5ch K-N1 (best) 9 N-K6 Q-K1 10 NxBP Q-N3 11 NxR QxNP 12 R-B1 N-B4 13 Q-K2 B-R6 14 B-K3 QxRch 15 QxQ BxQ 16 KxB K-B2 17 N-B7 N/3xP! 18 NxN (or 18 N/7-Q5 B-N4) NxN 19 N-Q5 (19 BxP R-QB1) B-B4.

(c) Not 7 . . . K-N3 8 P-KR4! P-KR4 9 P-B4 PxBP 10 N-K2, and White wins (Keres).

(d) Freeing K4 for Black's Knight marks the vital difference between this position and the variation in note (b).

(e) Forced, since 13 Q-K3 fails against 13 . . . N-B6ch 14 K-K2 B-N5.

(f) Everything else loses faster: I. 14 PxN B-R5ch 15 K-Q1 QxRch 16 K-Q2 B-K8ch; II. 14 R-KN1 B-R5ch 15 K-Q1 N-B7ch; III. 14 B-K3 B-R5ch 15 B-B2 N-B6ch; IV. 14 Q-N1 B-R5ch 15 K-Q1 N-B7ch 16 K-K2 B-N5.

(g) Barely managing to cover his ailing Rook, White now succumbs to the onward rush of a mobilized foe.

(h) Black must work harder after 18 K-Q2, e.g., 18 . . . B-N5 19 RxN BxR 20 Q-N5 B-B4ch 21 N-K2 (forced) QxKP 22 N-B7 (22 Q-Q3 Q-K2 and 23 . . . Q-Q1, 24 . . . QxN) B-K6ch 23 K-B3 B-N3, winning one of the Knights.

(i) To parry the threat of 19 . . . B-N5. If 19 K-Q2, for instance, then 19 . . . B-N5 leads into note (h).

(j) Allows a fine finish. The only chance to prolong the game rests with 21 PxB B-K8ch! 22 QxB N-B6ch 23 K-K2 NxQ 24 B-K3 QxPch! 25 KxN Q-R8ch 26 K-K2 QxR 27 N-Q5 P-KR4!, and Black's KRP is decisive.

(k) Just in time to escape 23 K-K2 B-B5mate.

WHERE TO PLAY CHESS

The Hayward Chess Club, 2058 D St. (Hayward Arts and Science Center). Monday and Friday, 8-12 p.m.

Cherryland Cafe, 22472 Meekland Ave. (corner of A St. and Meekland Ave.), Hayward. Evenings, 10 p.m. to 6 a.m.

The Fremont Chess Club, 37720 Fremont Blvd. (Centerville Jr. High School). Thursday, 7-10 p.m.

The Newark Chess Club, 35501 Cedar Blvd. (Newark Community Center). Tuesday, 7-10 p.m.

The Livermore Chess Club, Fourth and J Streets (in the old library of the Carnegie Building). Evenings, the 1st and 3rd Friday of the month.