

CHESS

By E. J. CLARKE

Miss Clara E. Cameron of Pomona, Cal., field secretary for California of the Correspondence Chess League of North America, writes:

"Chronicle Chess Editor: Could you spare a few lines for a notice of the Correspondence Chess League of N. A.? You know correspondence chess is a great boon to the cripples, shut-ins and isolated players, and yet many of them do not know of the league. The editors of chess magazines and columns can do much to help us. You can refer anyone interested to myself, as I shall be glad to answer all inquiries."

* * * *

Miss Cameron, who was the 1927 president of the C. C. L. N. A., is America's best known woman chess enthusiast, and, besides her work in promoting correspondence chess among shut-ins, convalescents, etc., she "carries between forty and fifty games most of the time, acquiring a host of friends, who discuss books, politics and philosophy, as well as swap games and analyze fine points in analysis which occur to the student." California's chess fraternity is proud of its "first lady."

* * * *

The National Chess Federation of the United States, headquarters, 11 South La Salle street, Chicago, unit of the Federation Internationale des Echecs, has issued its 1928 bulletin. Twenty-six chess organizations have affiliated with the federation as chapters. James Abbott, secretary, appeals to individual chess players to support the federation. "If every chess player who really loved the game would send in his application with \$1," he writes, "the federation could multiply its literature, finance tournaments, award medals and send representatives to the international tournament every summer." Do it NOW!

* * * *

World's Woman Chess Champion
At last year's annual meeting of the International Chess Federation, held in London, the title of world's woman chess champion was established for the first time. The tournament was won by Miss Vera Menchik of Hastings, England, who is 20 years of age. Following is a specimen of her skill. The game was played in a recent open tournament in London.

GAME No. 94

IRREGULAR

Arthur Baratz White	Vera Menchik Black	Arthur Baratz White	Vera Menchik Black
1 P-QS3	P-Q4	15 B-B3(c)	Q-R4(d)
2 B-S2	KS-B3	16 S-B	QxP
3 P-K3	P-KS3	17 B-K2	Q-R4
4 KS-B3	B-S2	18 P-B4	S-B3
5 P-KR3	Castles	19 K-B2	Q-B2
6 P-KS4	P-B4(a)	20 B-B3	P-Q5
7 B-S2	S-B3	21 S-K4	PxPch
8 P-Q3	B-Q2	22 K-S3	B-S2
9 QS-Q2	Q-B2!	23 SxKP	B-K(e)
10 S-B	KR-Q	24 Q-QB	P-KR3!(f)
11 S-S3	SxP(b)	25 P-B3	QxPch
12 PxS	BxB	26 K-B2	S-K4
13 QR-S	B-B6ch	27 Resigns	
14 S-Q2	S-K4		

NOTES

(a) Already Black has much the superior position. White's advanced king side pawns, while threatening, do not get very far.

(b) Very neat! Of course, if 12 BxB, SxP!, followed by QxSch and KxB.

(c) White is kept busy defending his poorly developed game. Obviously, if 15 P-B3, then SxPch.

(d) Threatening to win a piece, as also on her next move.

(e) Miss M. plays the game! This defends the pawn and prevents S-Q5, driving the queen. 24 SxP?, B-Q5!

(f) Preparing a clever mate, if KxQ on next move.

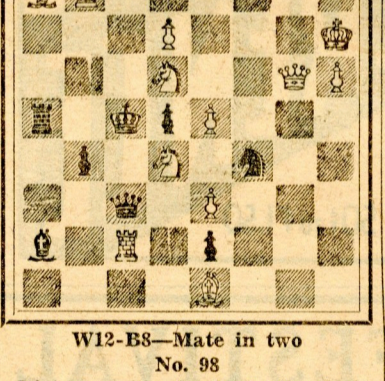
* * * *

PROBLEMS

A. J. F.

No. 96—T. C. Henriksen

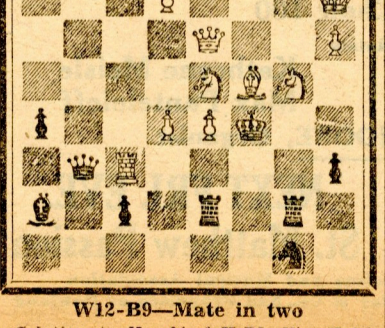
(The complete block; no change of mates)



W12-B8—Mate in two

No. 98

Joint composition by the Problem Editor and J. Frank Stimson of Tahiti; originally published in the Pittsburg Times, 1914.



W12-B9—Mate in two

Solution to No. 94—1 K-B5. Viz. K-Q4, then QxP, and if P-R6, then K-B6. No.

97—RXP. Viz. R-B4, B3, B2, Bsq., then R-Q5, Q6, Q7, Q8, accordingly. The Queen is sacrificed when Black plays RXP by Q-Q2ch.

Solutions acknowledged: Rev. R. W. King, Willits; A. Berkowitz, Palo Alto; W. R. S., city; J. Malone, Bencia; J. E. E., Los Gatos. C. A., Colusa, with this issue all problems should be accounted for. W. L. Pedrick, Ferndale, S. L. Bailey, Rose-dale; J. F. Lange, Colfax; George Pring, Alameda; P. Bowater, Pasadena; Barratt Huskinson, Roseville; E. Bergstrom, San Jose.