

CHESS

By E. J. CLARKE

The handicap tournament at the Mechanics' Institute resulted in a tie between W. H. Smith (class A) and V. C. Clowe (class B). N. Schaller (class C) was third.

* * * *

Eight Kreigspeil enthusiasts—Messrs. Barkhaus, Barlow, Dickinson, Herrick, McCready, Silvey, Legler and Seelye—took part in a tournament at the Institute last Sunday, "for the championship of Northern California." With the exception of Sam Maynard, now in Venezuela, the lineup represented the best talent at the popular "war" game in this vicinity. Therefore, the winner, William Barlow, is well entitled to his laurels. Barlow won six games, drew one.

* * * *

The San Francisco Bay Region High School Chess League, composed of Mission High, Lowell High, Fremont High, University High, Piedmont High and Oakland Technical High, has just completed its first team match and individual championships. In the preliminaries Mission won from Lowell, while across the bay University High won from Fremont and Piedmont. In the finals University High defeated Mission. Fred Byron won the individual championship of the league with a score of 4½ to ½. High schools in the bay region wishing to join the league may apply to G. McClaine of University High School, phone Piedmont 5594W. Polytechnic High School has entered a team for next term's tournament.

* * * *

GAME NO. 139

E. D. Boguljubow and Max Euwe, Dutch champion, are scheduled to start their return match of ten games at The Hague, December 23. The first match, last April, resulted in a win for Boguljubow by the close score of 3 to 2, with five games drawn. Following is a game won by Euwe in his tie match with Maroczy, in 1921:

KING'S GAMBIT DECLINED

Euwe White	Maroczy Black	Euwe White	Maroczy Black
1 P-K4	P-K4	13 BxB	P-KB4
2 P-KB4	B-B4	14 Castles	PxB
3 S-KB3	P-Q3	15 Q-S3	P-B4
4 P-B3	B-KS5	16 B-R3	S-KB3
5 PxP	PxP	17 BxP	Q-KB2
6 Q-R4ch(a)	B-Q2	18 P-B4!(b)	P-QS3
7 Q-B2	Q-K2	19 S-S5	Q-Q2
8 P-Q4	PxP	20 RxS!	PxR
9 PxP	B-S5ch	21 SxKP	Q-K3
10 S-B3	B-B3	22 R-K	PxB
11 B-Q3	BxSch	23 SxPch	K-B2
12 PxB	BxP	24 Q-S7ch	Resigns

(a) Marshall's invention. If 6 . . . Q-Q2; 7 B-S5, P-B3; 8 SxP, winning a pawn.

(b) To prevent exchange of queens. If 18 . . . PxS; 19 QR-Kch, K-Q; 20 R-K7, etc.

* * * *

GAME NO. 140

The following interesting game, taken from the British Chess Magazine, was played recently at Orenburg, (Germany?):

Argunof White	Gossberg Black	Argunof White	Gossberg Black
1 P-Q4	S-KB3	10 R-KS3	B-R4
2 P-QB4	P-K3	11 R-S3	P-S3
3 S-QB3	P-QS3	12 B-KS5	Q-K(a)
4 P-K4	B-S5	13 B-B6	R-S
5 P-K5	S-K5	14 Q-R4	P-R4
6 Q-S4	SxS	15 Q-S5	Q-B(b)
7 PxS	BxPch	16 Q-R6ch	K-K
8 K-Q	K-B	17 RxP	R-B
9 R-S	B-S2	18 QxRch	KxQ
		19 R-R6 and mates	

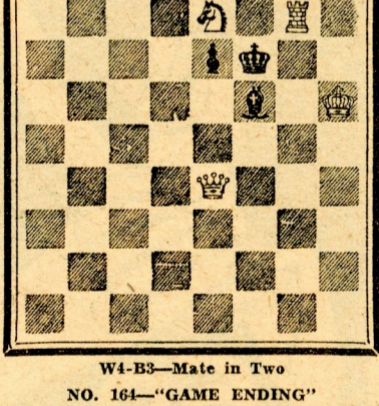
(a) Here Q-QB was necessary.

(b) Had he moved Q-B on his twelfth move he could play now P-Q3.

PROBLEMS

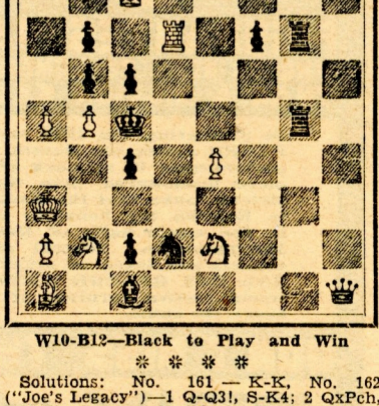
A. J. F.

(Composed for The S. F. Chronicle)
NO. 163—Percy Bowater, Pasadena



W4-B3—Mate in Two

NO. 164—"GAME ENDING"



W10-B12—Black to Play and Win

* * * *

Solutions: No. 161—K-K, No. 162 ("Joe's Legacy")—1 Q-Q3!, S-K4; 2 QxPch, PxQ dis ch; 3 S-S5 dbl. ch, K-R; 4 R-R7 mate.

Solvers's list: H. F. Marshall, Mill Valley; W. R. Shaw, city; M. C. Montecillo, Berkeley; P. Bowater, Pasadena; Q. M. Spencer, Vallejo; R. Dunipace, Palo Alto; E. S. Gilbert, Oakland; J. E. E., Los Gatos.