
Wilshire Chess Society Newsletter

OFFICERS

President & Editor-Michael Jeffrey
(310) 473-6291

MJeffrey@ix.netcom.com

Club Secretary-Lisa Edmondson (310) 836-5949

Assistant T.D.- Elliot Landaw (310) 552-4538

Vol. 8-5: May 2002



What it Was Like to Play Kasparov!

Apparently being president of the WCS does have its benefits. On Sunday evening March 17 (St. Patrick's Day!), I got the surprise phone call of a lifetime. It was former Mayor Dick Riordon's office calling to tell me that Kasparov (who is a friend of Riordon's), was in town! Furthermore, could I bring some chess sets down to the Puente Learning Center (in downtown L.A.) the next day where Kasparov would be conducting a simul? (Sure). And did I know of any kids that played chess that I could bring down? (Yes). And oh, by the way, did I want to play in the simul too? (Jackpot!).

After getting further details and directions, I immediately called Elliot Landaw to see if Max and Julian were available. However, things didn't go smoothly. There was the little problem that when I first called them (and this happened with several chess players I subsequently called), they didn't believe me! I'll never forget the sound of his wife laughing hysterically in the background when he told her that I was calling to see if Max and Julian wanted to play Kasparov. She even grabbed the phone and, while still laughing uncontrollably chided, "Yeah, and Queen Elizabeth will be there too!" Feeling a bit like Rodney Dangerfield, I finally convinced Elliot that this was no joke. (It turned out only Max could come--see his game on back).

The next day, myself, Danny Berman, Carl Hyne and Shawn Williams all drove to the learning center. After meeting the people in charge, we set up the 6 boards, and waited for the man to arrive. There were also some people with cameras from the media there (although not nearly as many as if this event had been publicized, which I don't think it was.) Finally, at around 2:00 pm, the man himself arrived. I walked outside the building to see him and the mayor, who were being met by the director of the center. When Kasparov shook my hand, the first thing I noticed was how strong he was. He looked fit and in shape. He is about 5-10 inches tall and his once black hair is now half grey ala Jay Leno.

After a few minutes, we all went up to the classroom where the simul was to be held. After the Mayor introduced him, Kasparov gave a very nice short speech about his goal of having chess in every school in the United States so as to cultivate new chess talent. I must say he is a very charismatic speaker and I know that he commands a lot of money as a speaker for big companies. Then it was time to start the simul. While the mayor was supposed to be one of the six boards (they had even set up a special wooden board just for him), he elected to follow Kasparov around and "help him" during the simul (although most of the moves were Kasparov's). Because some of the kids (besides Max) were beginners, my friends FM Carsten Hansen and Expert Danny Berman helped them with their moves. So, what was it like to face Kasparov? Actually, it was as intense/thrilling as you'd imagine it would be. Indeed, I was so nervous that during our game I screwed up the opening moves and quickly found myself in a lost position. And let me tell you, he



Michael Jeffrey going head to head with **Garry Kasparov** as former Mayor **Richard Riordon**, FM **Carsten Hansen**, and **Carl Hyne** look on

is very competitive. First, he won the simul easily 6-0. Then, when he and the mayor played a friendly game afterwards for the cameras, after about 10 moves Riordon said, "Draw?" and held out his hand, Kasparov smiled and said, "Adjourned!" He didn't want to give up the draw even when it didn't mean anything! Needless to say, meeting the champ and getting to play him was like a dream come true and I shall never forget it.

Congrats to the winners of our April 14 Tourn.: Quad 1: **Max Landaw**; Quad 2: **Ped Bashi & Pirouz Hendi** (tie); Quad 3: **Dwayne Copeland & Ghobad Vafa** (tie); Quad 4: **Kevin Gerson, Christian Jaime, Jack O'Donnell** (3 way tie); Quad 5: **Daniel Hustwit**

* We are meeting on May 12, in Com. Rm. A (Not C!) so as not to conflict with the Lina Grumette Mem. - *Michael*

Next W.C.S. G/45 Tournament May 12, 2002 - Sunday

Westside Pavilion, Community Room "A"
10850 W. Pico Blvd., West Los Angeles
(Com. Rm A is on the 3rd Flr., by Robinsons
-May, in hallway behind the food court)
Registration 10:30 am
Games from 11:00 - 4:30pm (approximately)
3-rounds, round robin quads by rating
Time control: G/45 mins. Entry fee: \$15.00
Prizes: \$35.00 per quad (25.00 1st, 10.00 2nd)
(WCS Membership required, \$12.00/year as
well as U.S.C.F. Membership
(Avail. at site for \$40.00 per year).

Game of The Month

GM Garry Kasparov (2838) - Michael Jeffreys (1675)
 Puente Learning Center Simul, Los Angeles
Slav Defense

1. **d4 d5** 2. **c4 c6** 3. **♘c3 ♘f6** 4. **e3 dxc4?!** I was so nervous I mixed up my opening. Correct is 4...e6.
 5. **♙xc4 ♙f5?** Terrible! This just drops a couple of pawns for no comp. 6. **♖b3 e6** 7. **♗xb7 ♘bd7**
 8. **♚ge2?!** This was the only move of the game made by Riordon. Kasparov, who was at another board, most assuredly would have played the more natural 8. Nf3. **8...♙e7** Trying to save the c6 pawn with 8...Qc8 fails to 9. Ba6! **9. 0-0 0-0** 10. **♗xc6** On the video that Elliot shot, there is a hilarious moment here where you can clearly see me shoot Kasparov a dirty look as he was walking away! The reason was that he almost didn't take the pawn, and I had hopes of defending it with Qb6. But at the last second he took it. Rats! **10...♞c8** 11. **♗a6 ♗c7** 12. **♙b3 ♘b8** At least I got to kick the champs queen around! **13. ♗a4 a6** To prevent Nb5. **14. ♚g3 ♙g6** 15. **e4 ♞fd8** 16. **♙e3 ♘fd7** 17. **d5 ♘b6** 18. **♙xb6 ♗xb6** 19. **dxe6 fxe6** 20. **♞fd1 ♞xd1?!** At this point, Kasparov had to leave to get to another engagement, so he just stood in front of each board and blitzed you out! **21. ♞xd1 ♙c5** 22. **♗h1 ♙xf2** Hey, I won a pawn back! **23. ♘f5 ♙xf5?!** 23...Bc5 was mandatory to stop moves like 24. Ne7+ and 24. Rd6. **24. exf5** Resigns **1-0**



Group photo of the simul participants includes Max Landaw(L), Michael Jeffreys, Danny Berman, Kasparov, Riordon and FM Carsten Hansen(R).



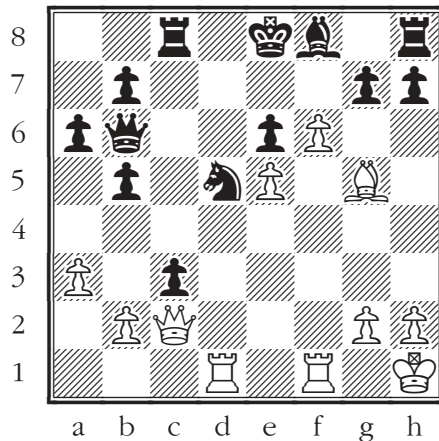
Kasparov played a short game with Riordon after the simul, and after about 10 moves, the ex-mayor said, "Draw?" and Kasparov, ever the competitor said, "Adjourned!"

GM Garry Kasparov (2838) - Max Landaw (1973)
 Puente Learning Center Simul, Los Angeles
Caro-Kann Defense

1. **e4 c6** 2. **d4 d5** 3. **e5 ♙f5** 4. **♘f3 e6** 5. **a3 c5**
 6. **c4 ♘c6** 7. **cxd5 exd5** 8. **♘c3 cxd4** 9. **♘xd4 ♙e6** 10. **♙b5 ♞c8** 11. **O-O ♘e7** 12. **♙g5 ♗c7**
 13. **f4 a6** 14. **♙a4 b5** 15. **♘xe6 fxe6** 16. **♙c2 ♗b6+** 17. **♗h1 ♘d4** 18. **f5 ♘xc2** 19. **♗xc2 d4**
 20. **f6 dxc3** 21. **♞ad1 ♘d5?** Elliot told me that according to REBEL, Max had to play 21...gxf6 here.

(See Diagram)

22. **♞xd5! exd5** 23. **♗f5!** With the dual threat of 24. Qxc8+ and 24. f7# **1-0**



White to Move