

# OUR CHESS COLUMN.

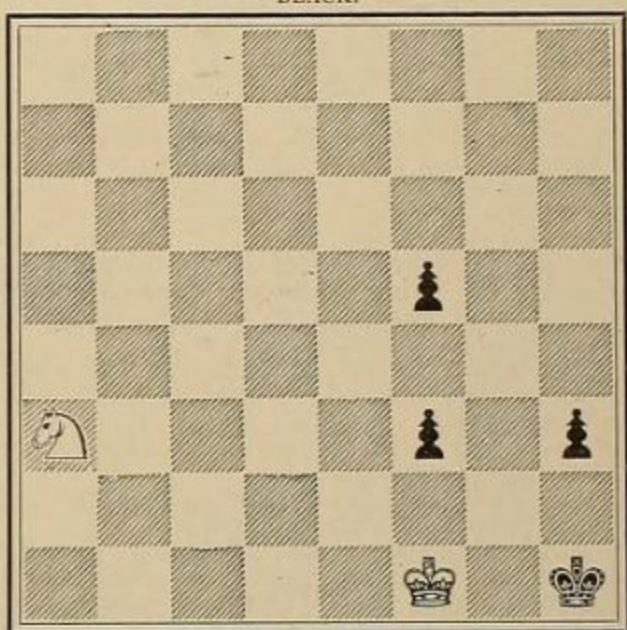
Problems and Other Topics of Interest in the King of Games.

[All communications for this department should be addressed to "Chess Editor Argonaut, No. 2115 Fillmore Street, San Francisco, Cal."]

Strangers visiting San Francisco, who are fond of chess, are cordially invited by the officers to make themselves known at the Librarian's desk of the Mechanics' Institute, where they will be provided with visitors' tickets, and introduced to members, who are always pleased to meet and welcome lovers of Caissa from abroad.

At the request of several correspondents, we reprint the problem which was incorrectly published in our issue of February 16th:

BLACK.



WHITE.

White to play and win in any of nine variations.

A pretty specimen of the Allgaier-Thorold, contested January 10th, at the rooms of the Chicago Chess Club, between Mr. John A. Adair, secretary of the club, and Dr. Zukertort. Score and notes indicated by italics from the Milwaukee *Sunday Telegraph*:

<i>White.</i>	<i>Black.</i>	<i>White.</i>	<i>Black.</i>
Mr. Adair.	Dr. Zukertort.	12—Kt Q2 ( <i>d</i> )	12—QB B4
1—P K4	1—P K4	13—B K3 ( <i>e</i> )	13—R B
2—P KB4	2—P x P	14—Kt x P ( <i>f</i> )	14—K R2
3—Kt KB3	3—P KKt4	15—Kt Kt3	15—K R
4—P KR4	4—P Kt5	16—Q Q2	16—Q Q3
5—Kt Kt5	5—P KR3	17—B B4	17—Q QKt3
6—Kt x KBP	6—K x Kt ( <i>a</i> )	18—QR K	18—QKt B3
7—P Q4 ( <i>z</i> )	7—P Q4	19—B x KRP	19—B Kt3
8—B x KBP	8—P x P	20—B x B ch	20—K x B
9—B B4 ch	9—K Kt3( <i>y</i> )( <i>b</i> )	21—Q KKt5	21—R x R ch
10—Castles ( <i>c</i> )	10—B Kt2	22—R x R and Black resigns ( <i>g</i> )	
11—P QB3	11—Kt K2		

(*a*) The moves now made constitute the true Allgaier in which Mr. Adair has few equals.

(*z*) For the benefit of younger players, we may add that this continuation, introduced by Mr. Thorold, one of the leading English experts, is now considered the only advisable form of pursuing the attack in the Allgaier proper.

(*y*) 9—K Kt2, followed by 10—Kt KB3 (whether White play 10—Castles, or 10—B K5 ch, or 10—Kt KB3) is the approved continuation at this point. We can not but think the text play looks very hazardous, to say the least.

(*b*) It is quite customary with European players to move thus in order to play B Kt2, but—

(*c*) It is also their practice to play here P R5 (ch)

(*d*) Forcing the undesirable answer which follows.

(*e*) Threatening R tks B, etc.

(*f*) If B tks Kt, Q tks P (ch).

(*g*) This game is remarkable for the number of unhappy moves White forces his great antagonist to make—especially the 12th, 14th, 18th, and 19th.—*New Orleans Times-Democrat*.

An exceedingly interesting match at chess is in progress between Messrs. Redding and Jefferson, two of the strongest players on this coast. The first game of a series of seven was played last Friday, at the house of Mr. Redding, on California Street, in the presence of a few invited friends of both gentlemen. The opening was made by Mr. Redding, who developed a Scotch Gambit, which resulted, after a hard-fought contest of three hours and ten minutes duration, in a draw. The second game was contested the early part of the week at the same place, when Mr. Jefferson opened with a Ruy Lopez, which, after four hours, was also declared a drawn game.

<i>White.</i>	<i>Black.</i>	<i>White.</i>	<i>Black.</i>
Mr. Redding.	Mr. Jefferson.	26—B x KRP	26—B KB2
1—P K4	1—P K4	27—B KB5 ch	27—K Kt sq
2—KKt B3	2—QKt B3	28—KB Q3	28—R Q sq
3—P Q4	3—P x P	29—B KB sq	29—P QKt3
4—Kt x P	4—B KB4	30—P KR4	30—B B3
5—Kt x Kt	5—Q KB3	31—R QB sq	31—B K4
6—Q Q2	6—QP x Kt	32—K R2	32—R Q5
7—B Q3	7—Kt K2	33—K R3	33—B K3
8—Castles	8—Kt KKt3	34—K Kt2	34—QB KB4
9—K R sq	9—Kt K4	35—B K2	35—QB Q6
10—B K2	10—QB Q2	36—R K sq	36—R K5
11—P KB4	11—Kt KKt3	37—K KB3	37—R x B
12—P K5	12—Q K2	38—R x R	38—B x R ch
13—P QR3	13—Castles QR	39—K x B	39—B x KKtP
14—B Q3	14—P KB3	40—P R5	40—P QKt4
15—P QKt4	15—B QKt3	41—K Q3	41—B K4
16—P QB4	16—KB Q5	42—Kt B3	42—B x Kt
17—R QR2	17—BP x P	43—K x B	43—K B sq
18—R K sq	18—Q KB3	44—K Q4	44—K Q2
19—BP x P	19—B x P	45—P QB5	45—K K3
20—Q KKt5	20—QR K sq	46—K K4	46—K KB3
21—QR K2	21—KKt B5	47—K B4	47—P KKt3
22—QB x Kt	22—Q x B	48—P R6	48—P Kt4 ch
23—Q x Q	23—B x Q	49—K Kt4	49—K Kt3
24—R x R ch	24—B x R	50—P R7	50—K x P
25—P KKt3	25—KB KKt4	51—K x P	

And the game was abandoned as drawn.