

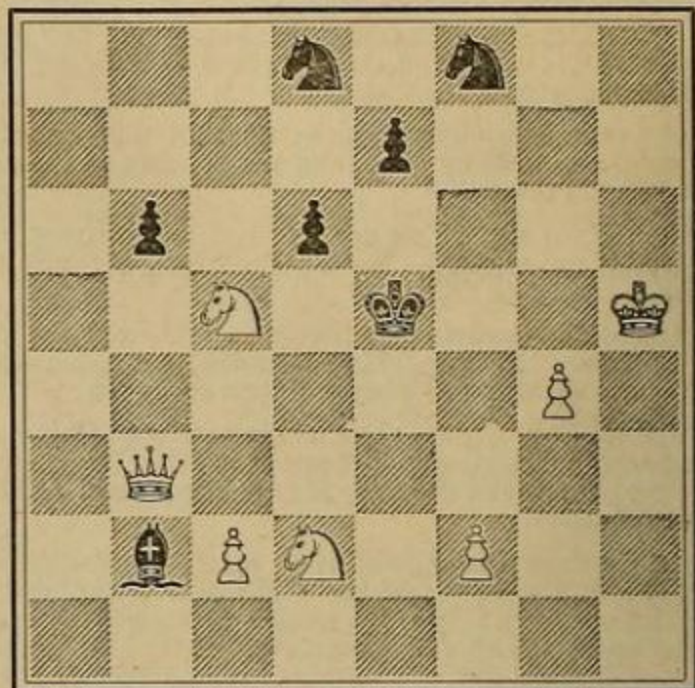
THE CHESS-PLAYER.

[All communications for this department should be addressed to "Chess Editor Argonaut, No. 213 Dupont Street, San Francisco, Cal."]

Problem No. LXXI.—By J. Thursby.

WHITE—King at Kt5; Queen at KR6; Rook at K sq; Bishop at Kt7; Knights at QR4, QR7; Pawns at QKt6, Q2.
 BLACK—King at Q4; Bishop at Q2; Knight at QR7; Pawns at Q6, QB4.
 White to play and mate in two moves.

Problem No. LXXII.—By Ludwig Fechter, Vienna.
 BLACK.



WHITE.

White to play and mate in three moves.

Solution of Problem No. LXIII.

1—Q KB8
 2—Q or Kt mates.

1—Any move

Solution of Problem No. LXIV.

1—B Kt 4 ch
 2—B KB6
 3—Kt Q2 mates.

1—K K5
 2—Any move (if B x R,
 B KB5 mate).

Correct solutions received as follows: Problems LXI, LXIII, LXIV, from B. M. Parker, Eureka, Cal. Problem No. LXVIII, from R. G. Cunningham, Los Angeles, Cal. Problem No. LXV, from "Quincy," Oakland, Cal.

Answers to Correspondents.

R. G. C.—In No. LXVII, if Black R x B, pinning Kt, mate can not be given.
 B. M. P.—In No. LXV, if 2 Kt Q5 ch, B x Kt. See answer above.

Game No. 47.

Played at the Mechanics' Institute, July 1884, between Mr. Jefferson and Doctor J. H. Zukertort. Game and notes from the *Chess Monthly*.

GIUOCO PIANO (ODDS GAME.)

Remove White's Q Kt.

White.	Black.	White.	Black.
Zukertort.	Jefferson.	26—B B2	26—P KR3
1—P K4	1—P K4	27—B Kt3	27—Kt R2
2—Kt B3	2—Kt QB3	28—B Q2	28—KR KB sq
3—B B4	3—B B4	29—B B3	29—Kt B3
4—P B3	4—Kt B3	30—P B3	30—P QKt3 (?)
5—Castles	5—P Q3 (a)	31—P K4	31—Kt Q4 (?)
6—P Q4	6—P x P	32—R x P ch	32—K Kt sq
7—P x P	7—B Kt3	33—R x P	33—QR Q sq
8—P Q5	8—Kt K2	34—R Kt6	34—R B2
9—P K5 (b)	9—P x P	35—R Kt5	35—Kt x B (h)
10—Kt x P	10—QKt x P	36—P x Kt	36—K B sq
11—B Kt5	11—B K3	37—B x R	37—K x B
12—R K sq	12—Castles	38—R B5 ch	38—K K3
13—Q B3	13—P B3	39—R B4	39—R Q8 ch
14—QR Q sq	14—Q B sq	40—K B2	40—R Q7 ch
15—P KR3	15—B B2	41—K Kt3	41—R x P
16—B Q3	16—R K sq	42—R K4 ch	42—K B3
17—B Kt sq	17—R x P	43—P KB4	43—R R6
18—R x Kt (c)	18—Kt x R (d)	44—P Kt5 ch	44—K B4
19—Q x P ch	19—K R sq	45—R K5 ch	45—K Kt3
20—B R6 (!)	20—B x Kt	46—K Kt4	46—R x P
21—R x B	21—R KKt sq	47—R K7 (!)	47—P R4
22—R R5 (!)	22—Kt B3 (e)	48—P B5 ch	48—K R2
23—R x B	23—Q Q2 (f)	49—R K8 (!)	49—P Kt3 (i)
24—Q x Q	24—Kt x Q	50—P B6	50—P R5 (j)
25—B Kt5	25—Kt B sq (g)	51—P B7	Resigns.

(a) 5—Kt x P is here considered best.

(b) Sacrificing a pawn for the sake of complicating matters.

(c) Not quite sound, but a piece and two pawns behind, White must keep up the attack at any price.

(d) After 18—P x R, 19 B x Kt, P x B; 20 Q to R5 or 20 Q x P, Black would find ample means of defense, and his vastly superior material should soon tell.

(e) 22—Q Q2 was tempting, but it would prove insufficient; e. g.: 22—Q Q2; 23 B Kt5, Kt B3; 24 Q Kt6 (!). If 24 B x Kt, then 24—Q Q8 ch and 25—Q x B.

(f) 23—P x B would be met with: 24 Q x Kt ch, R Kt2; 25 R x P, Q Kt5—the only saving move; if 25—K Kt sq, White forces the game with 26 B x P ch; if 25—Q Q2, then 26 B x P; 26 R x P ch, K Kt sq; 27 R x R ch, Q x R; 28 Q K6 ch, etc.

(g) If 25—P KR3, White would continue with 26 B x P, P x B; 27 R x P ch, K Kt2; 28 R R7 ch, and 29 R x Kt.

(h) Best under the circumstances, and sufficient to effect a draw.

(i) His best course would be 49—R B5 ch; 50 K R5, P Kt3 ch, etc.

(j) If 50—R B5 ch, then 51 K Kt3 (!), R B6 ch; 52 K B4, R B8; 53 R K7 ch, K R sq; 54 K K5, etc.

Mr. J. H. Blackburne, the noted English chess-player, was announced to leave England on the 29th ultimo, for a trip to Australia. It is Mr. Blackburne's intention to remain there during the winter, returning to England some time during next spring, by way of the United States. San Francisco may expect a two weeks' visit at that time, during which he will doubtless give an exhibition of his blindfold play.

The national testimonial, concerning which appeals are still made to the English chess-players, has reached about two hundred and ten pounds.